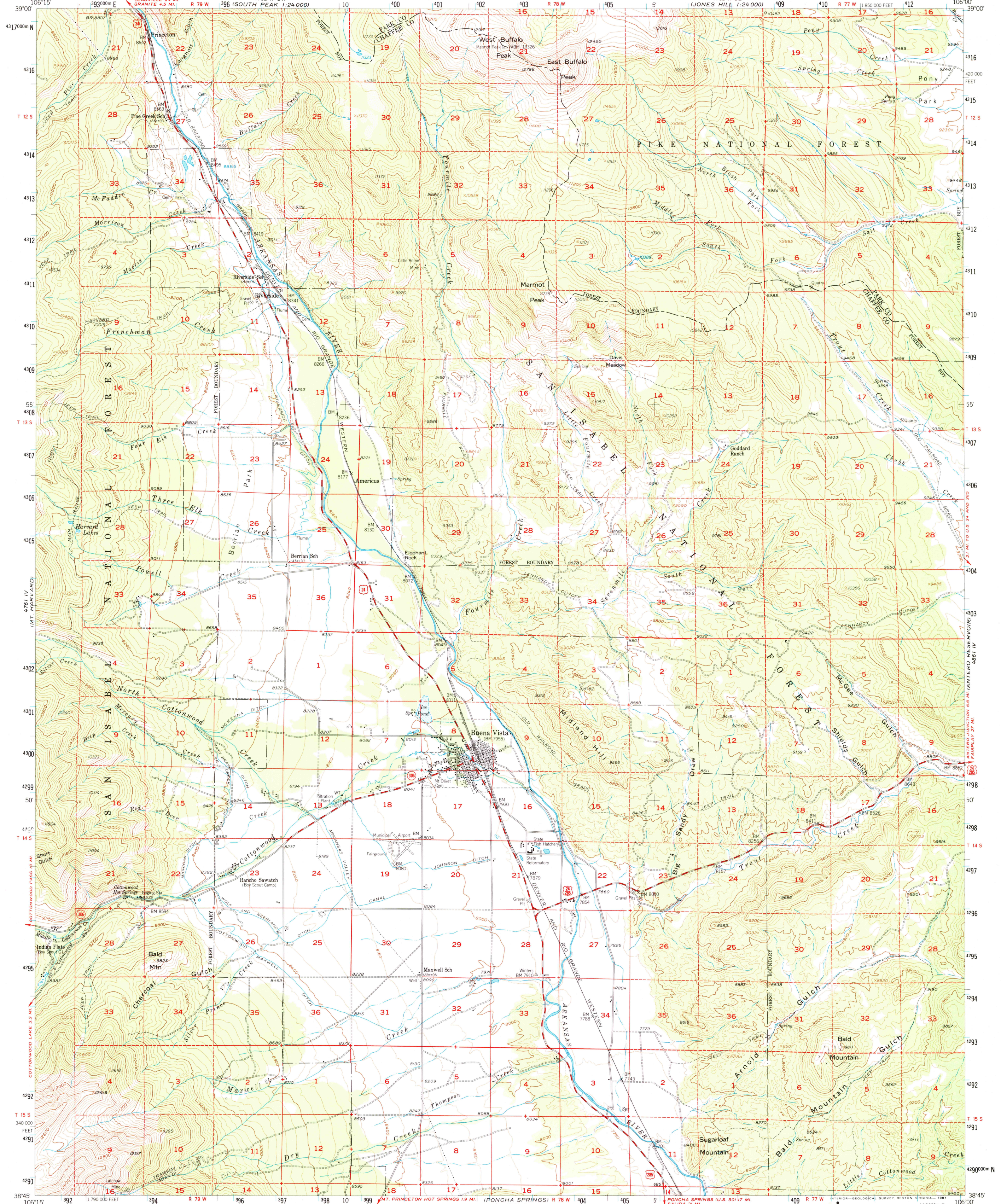


38° 45' N
106° 15' W

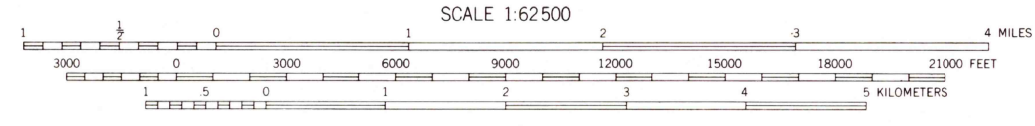
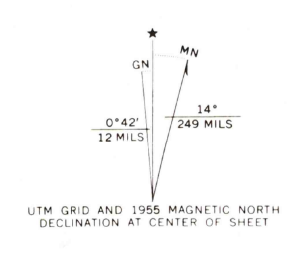
UNITED STATES
DEPARTMENT OF THE INTERIOR
GEOLOGICAL SURVEY

BUENA VISTA QUADRANGLE
COLORADO
15 MINUTE SERIES (TOPOGRAPHIC)

38° 45' N
106° 15' W

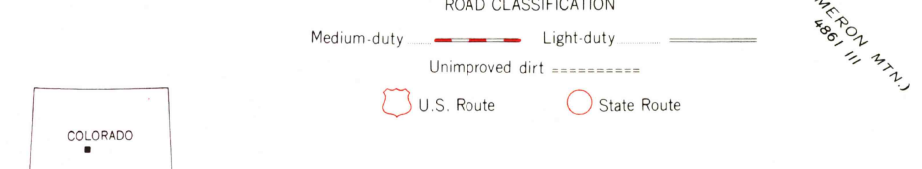


Mapped, edited, and published by the Geological Survey
Control by USGS and USC&GS
Topography from aerial photographs by photogrammetric methods
Aerial photographs taken 1953. Field check 1955
Polyconic projection. 1927 North American Datum
10,000-foot grid based on Colorado coordinate system,
central zone
Dashed land lines indicate approximate locations
Certain land lines are omitted in T. 12, 13, 14, and 15 S. R. 79 W.
because of insufficient data
Unchecked elevations are shown in brown
1000-meter Universal Transverse Mercator grid ticks,
zone 13 shown in blue
There may be private holdings within the boundaries of the
National or State reservations shown on this map
To place on the predicted North American Datum 1983 move
the projection lines 4 meters north and 51 meters east



CONTOUR INTERVAL 80 FEET
NATIONAL GEODETIC VERTICAL DATUM OF 1929

THIS MAP COMPLIES WITH NATIONAL MAP ACCURACY STANDARDS
FOR SALE BY U. S. GEOLOGICAL SURVEY, DENVER, COLORADO 80225, OR RESTON, VIRGINIA 22092
A FOLDER DESCRIBING TOPOGRAPHIC MAPS AND SYMBOLS IS AVAILABLE ON REQUEST



BUENA VISTA, COLO.
38106-G1-TF-062
1955
DMA 4761 I-SERIES V777

USGS NMD HISTORICAL MAP
AUG 24 1987
REC'D FILE COPY