

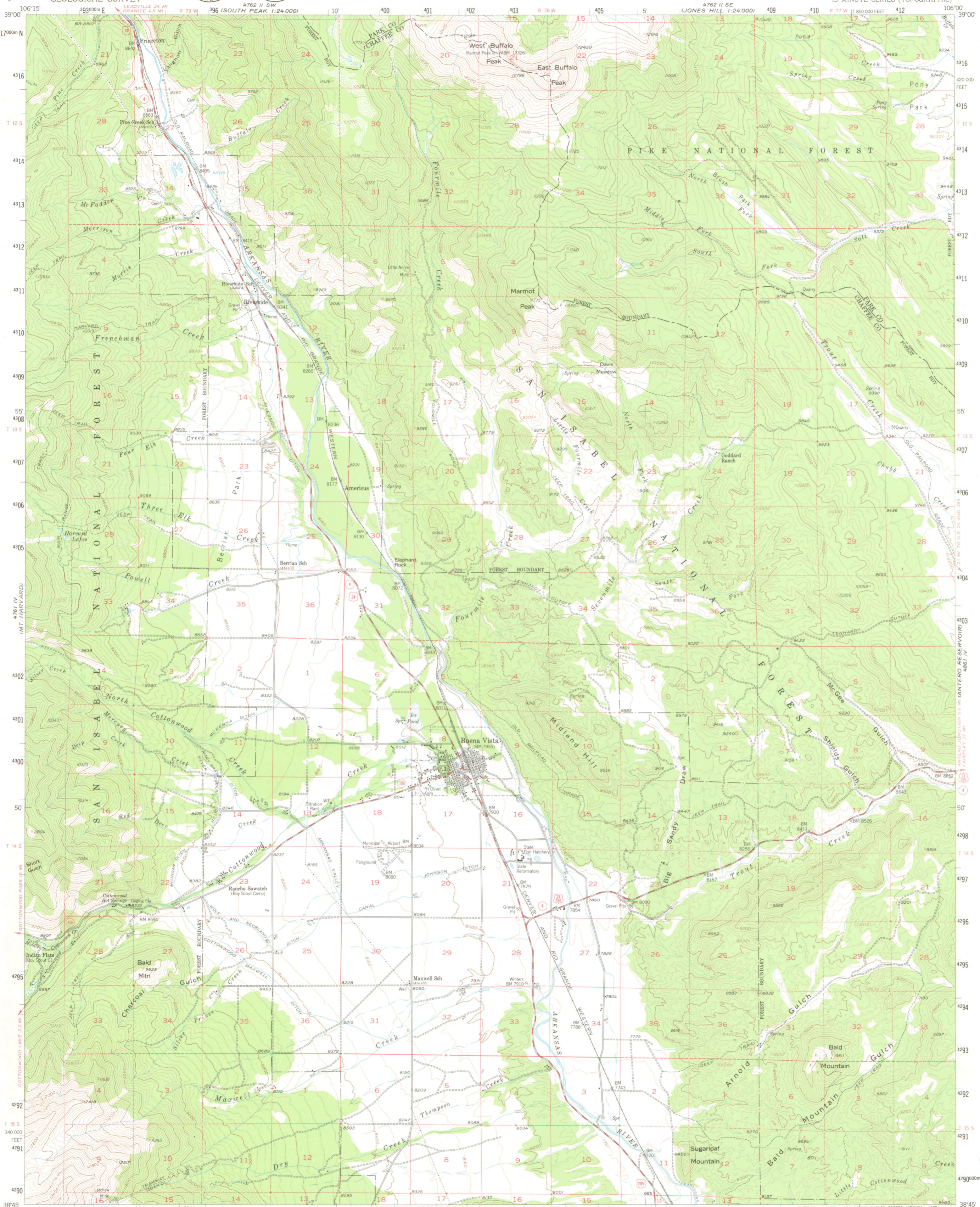
4761 II SE  
(6487111)

UNITED STATES  
DEPARTMENT OF THE INTERIOR  
GEOLOGICAL SURVEY



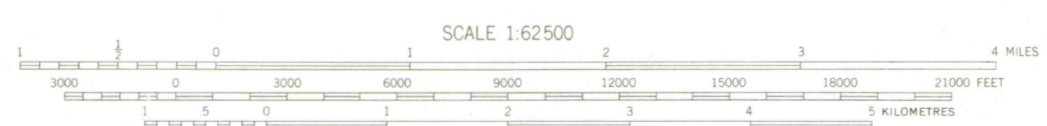
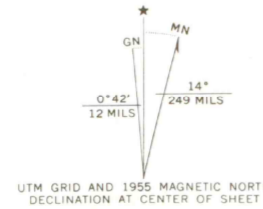
BUENA VISTA QUADRANGLE  
COLORADO  
15 MINUTE SERIES (TOPOGRAPHIC)

4761 III SW  
(6487112)



4761 I SE  
(6487110)

Mapped, edited, and published by the Geological Survey  
Control by USGS and USC&GS  
Topography from aerial photographs by photogrammetric methods  
Aerial photographs taken 1953. Field check 1955.  
Polyconic projection. 1927 North American datum  
10,000-foot grid based on Colorado coordinate system,  
central zone  
Dashed land lines indicate approximate locations  
Certain land lines are omitted in T. 12, 13, 14, and 15 S.-R. 79 W.  
because of insufficient data  
Unchecked elevations are shown in brown  
1000-metre Universal Transverse Mercator grid ticks,  
zone 13, shown in blue  
There may be private inholdings within the boundaries of  
the National or State reservations shown on this map



CONTOUR INTERVAL 80 FEET  
NATIONAL GEODETIC VERTICAL DATUM OF 1929

THIS MAP COMPLIES WITH NATIONAL MAP ACCURACY STANDARDS  
FOR SALE BY U.S. GEOLOGICAL SURVEY, DENVER, COLORADO 80225, OR RESTON, VIRGINIA 22092  
A FOLDER DESCRIBING TOPOGRAPHIC MAPS AND SYMBOLS IS AVAILABLE ON REQUEST



ROAD CLASSIFICATION

Medium-duty	Light-duty
Unimproved dirt	State Route
U.S. Route	

BUENA VISTA, COLO.  
N3845-W10600/15  
1955  
DMA 4761 I-SERIES V777

AUG 12 1999

MAP FROM  
ARTHUR LAKES LIBRARY  
COLORADO SCHOOL OF MINING

LIBRARY USE ONLY

OFFICE COPY

G  
37  
C222  
S62  
U5