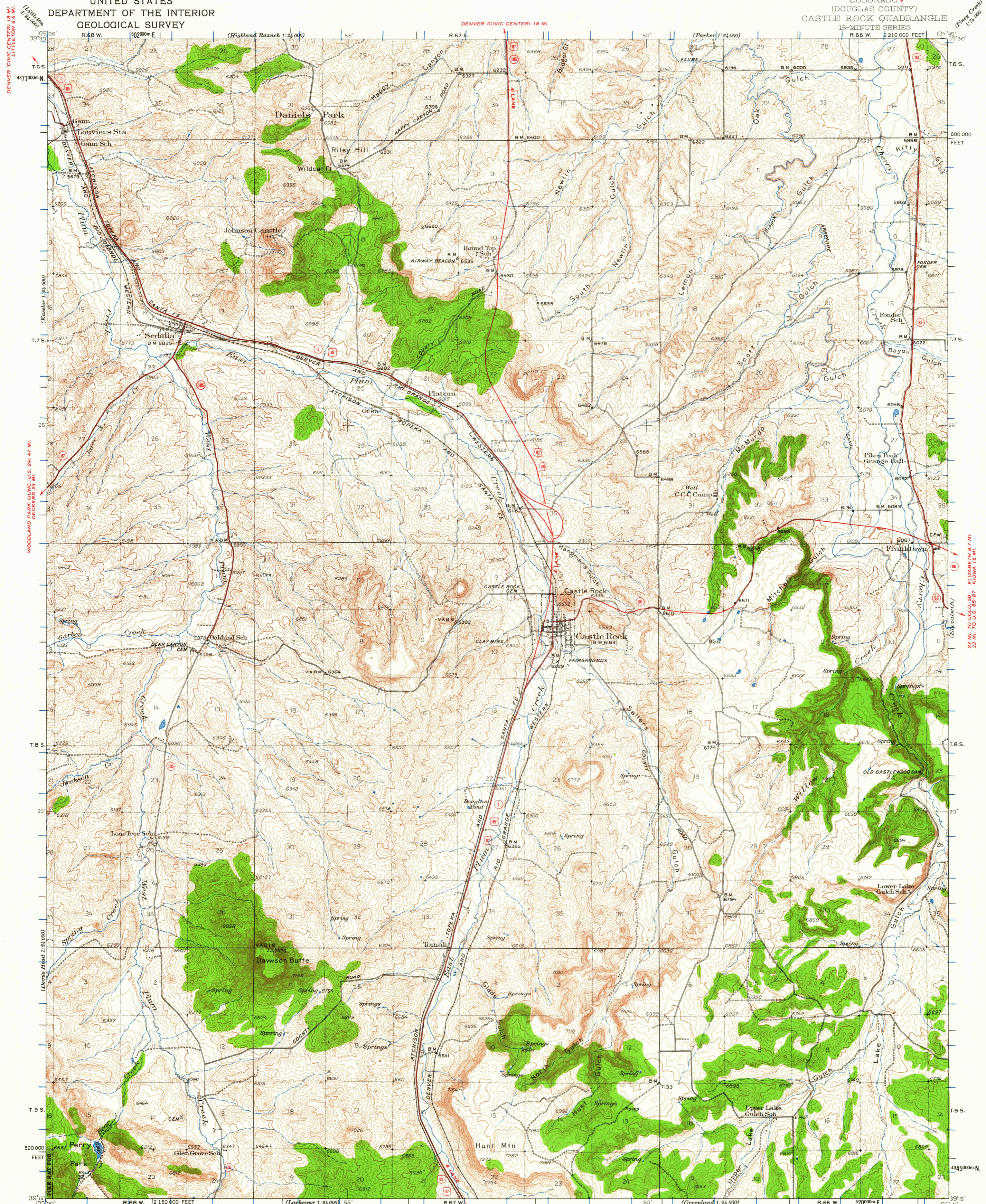


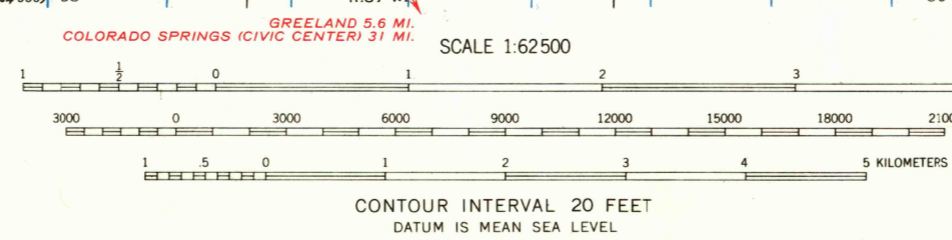
UNITED STATES
DEPARTMENT OF THE INTERIOR
GEOLOGICAL SURVEY

DENVER (CIVIC CENTER) 18 MI.
PARKER 1.3 MI.
COLORADO
(DOUGLAS COUNTY)
CASTLE ROCK QUADRANGLE
15-MINUTE SERIES



Topography by S.G. Lunde, C.E. Walker,
F.L. Gregg, R.E. Mann, D.F.C. Moon, and
S.M. Walker
Surveyed in 1934, 1938, 1939, and 1940

ROAD CLASSIFICATION
Heavy-duty ——— Light-duty ———
Medium-duty ——— Unimproved dirt - - - - -
U.S. Route State Route



Polyconic projection. 1927 North American datum
10,000-foot grid based on Colorado (Central)
rectangular coordinate system
1000-meter Universal Transverse Mercator grid ticks,
zone 13, shown in blue

USGS
Historical File
Topographic Division

CASTLE ROCK, COLO.
N 3915-W 10445/15
1940

FOR SALE BY U.S. GEOLOGICAL SURVEY, DENVER 25, COLORADO OR WASHINGTON 25, D. C.
A FOLDER DESCRIBING TOPOGRAPHIC MAPS AND SYMBOLS IS AVAILABLE ON REQUEST

FILE COPY
TOPOGRAPHIC DIVISION

JUN 26 1940

3530