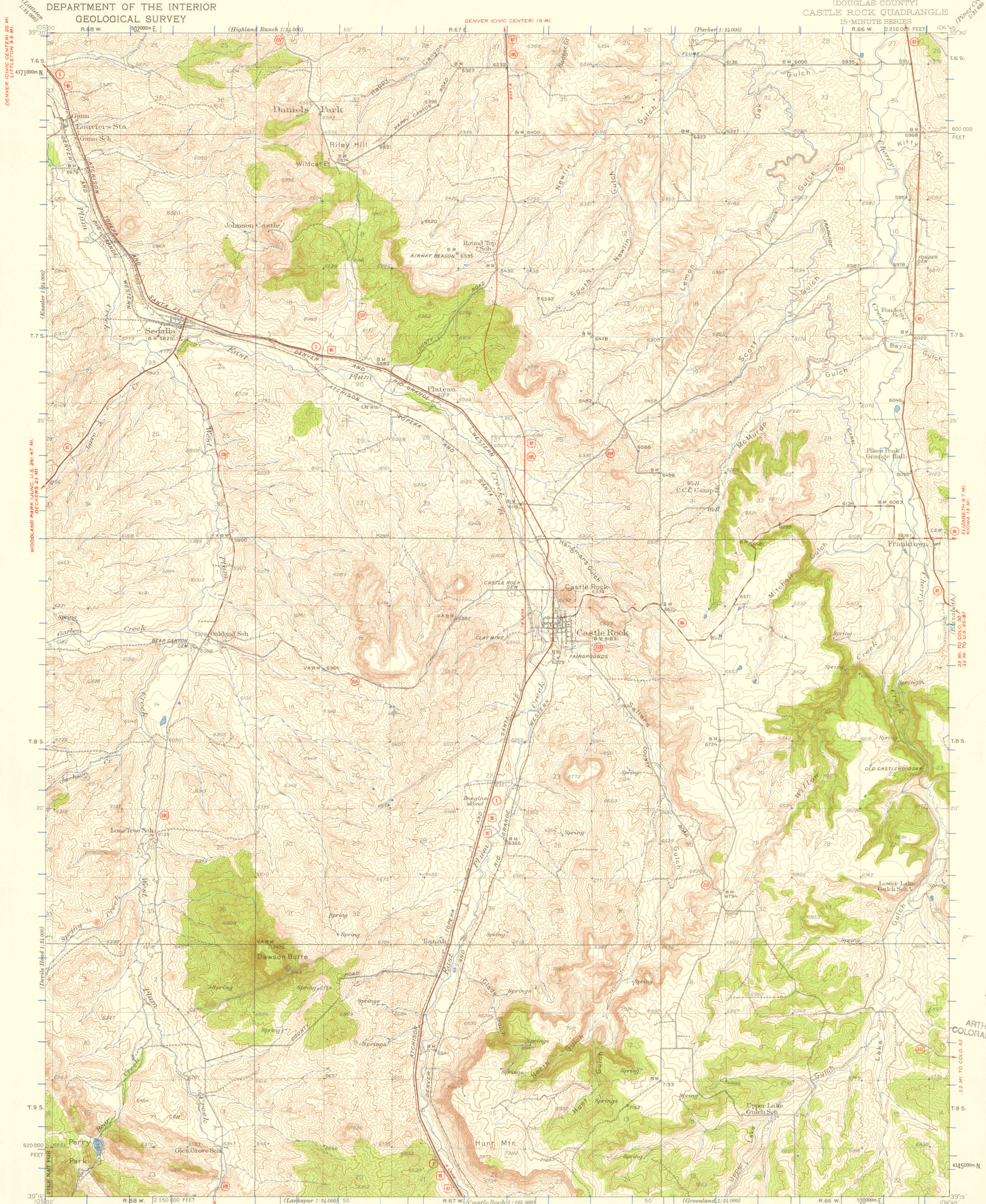


UNITED STATES
DEPARTMENT OF THE INTERIOR
GEOLOGICAL SURVEY

DENVER (CIVIC CENTER) 23 MI.
PARKER 1.3 MI.
COLORADO
(DOUGLAS COUNTY)
CASTLE ROCK QUADRANGLE
15-MINUTE SERIES



Topography by S.G. Lunde, C.E. Walker,
F.L. Gregg, R.E. Mann, D.F.C. Moor, and
S.M. Walker
Surveyed in 1934, 1938, 1939, and 1940

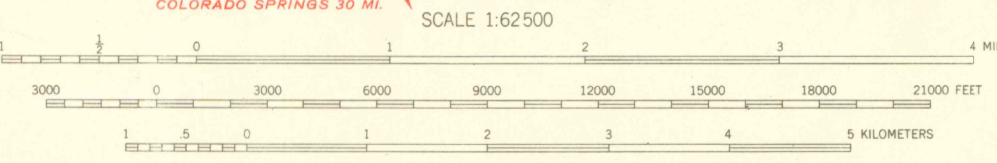
ROAD CLASSIFICATION

Heavy-duty ——— Light-duty ———
Medium-duty ——— Unimproved dirt ———

U.S. Route State Route

APPROXIMATE MEAN
DECLINATION, 1939

PALMER LAKE 10 MI.
MONUMENT (U.S. 89-97) 12 MI.



CONTOUR INTERVAL 20 FEET
DATUM IS MEAN SEA LEVEL

FOR SALE BY U.S. GEOLOGICAL SURVEY, DENVER 2, COLORADO OR WASHINGTON 25, D. C.
A FOLDER DESCRIBING TOPOGRAPHIC MAPS AND SYMBOLS IS AVAILABLE ON REQUEST

Polyconic projection. 1927 North American datum
10,000-foot grid based on Colorado (Central)
rectangular coordinate system
1000-meter Universal Transverse Mercator grid ticks,
zone 13, shown in blue

CASTLE ROCK, COLO.
N 3915-W 10445/15

LIBRARY USE ONLY - 1940

OFFICE COPY

AUG 08 1937

M.P. ROOM
ARTHUR LAKES LIBRARY
COLORADO SCHOOL OF MINE

G
3701
C222
52
U5.