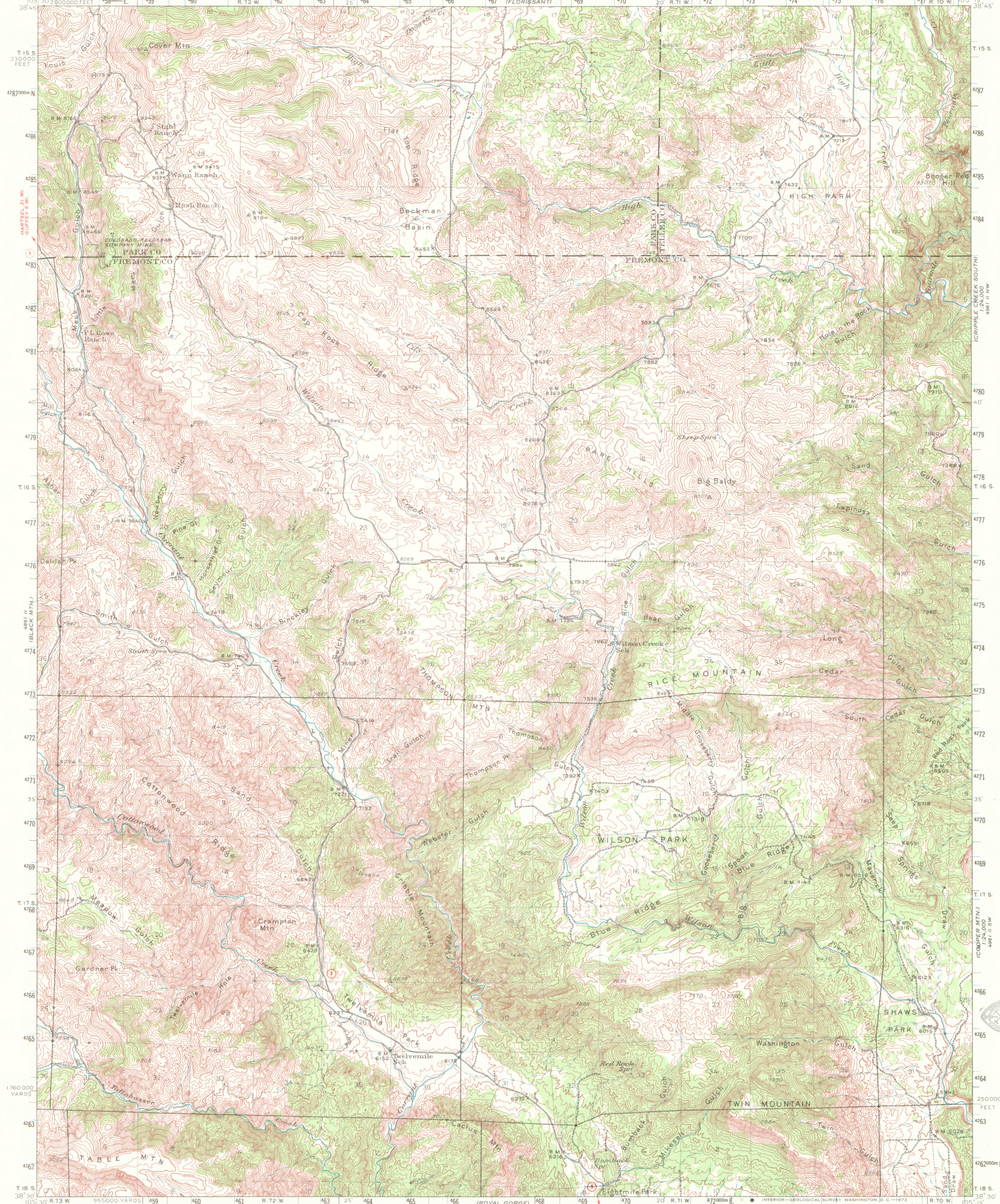


UNITED STATES  
DEPARTMENT OF THE INTERIOR  
GEOLOGICAL SURVEY

COLORADO  
COVER MOUNTAIN QUADRANGLE  
15-MINUTE SERIES

AMS 4961 III  
CRIPPLE CREEK (NORTH)  
1:24,000



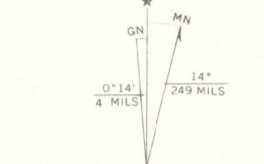
Mapped by the Geological Survey  
1942



**ROAD CLASSIFICATION 1947**

Dependable hard-surface	Dry weather roads	U. S. Route 16
Heavy-duty road	Loose surface, graded	State Route 21
Secondary hard-surface	Unimproved, graded	
All-weather road	Dirt road	

More than two lanes indicate along road with tick at point of change.



Contour interval 50 feet  
Datum is mean sea level

Polyconic projection. 1927 North American datum  
5000 yard grid based on U.S. zone system, E  
10000 foot grid based on Colorado (Central)  
rectangular coordinate system  
1000-meter Universal Transverse Mercator grid ticks,  
zone 13, shown in blue

COVER Mtn, COLO.  
N3830-W10515/15  
1942  
OFFICE COPY

FOR SALE BY U. S. GEOLOGICAL SURVEY, DENVER, COLORADO 80225 OR WASHINGTON, D. C. 20242  
A FOLDER DESCRIBING TOPOGRAPHIC MAPS AND SYMBOLS IS AVAILABLE ON REQUEST

AMS 4961 III—SERIES V777

JAN 18 1979  
MAP ROOM

ARTHUR H. HAYS LIBRARY



LIBRARY USE ONLY