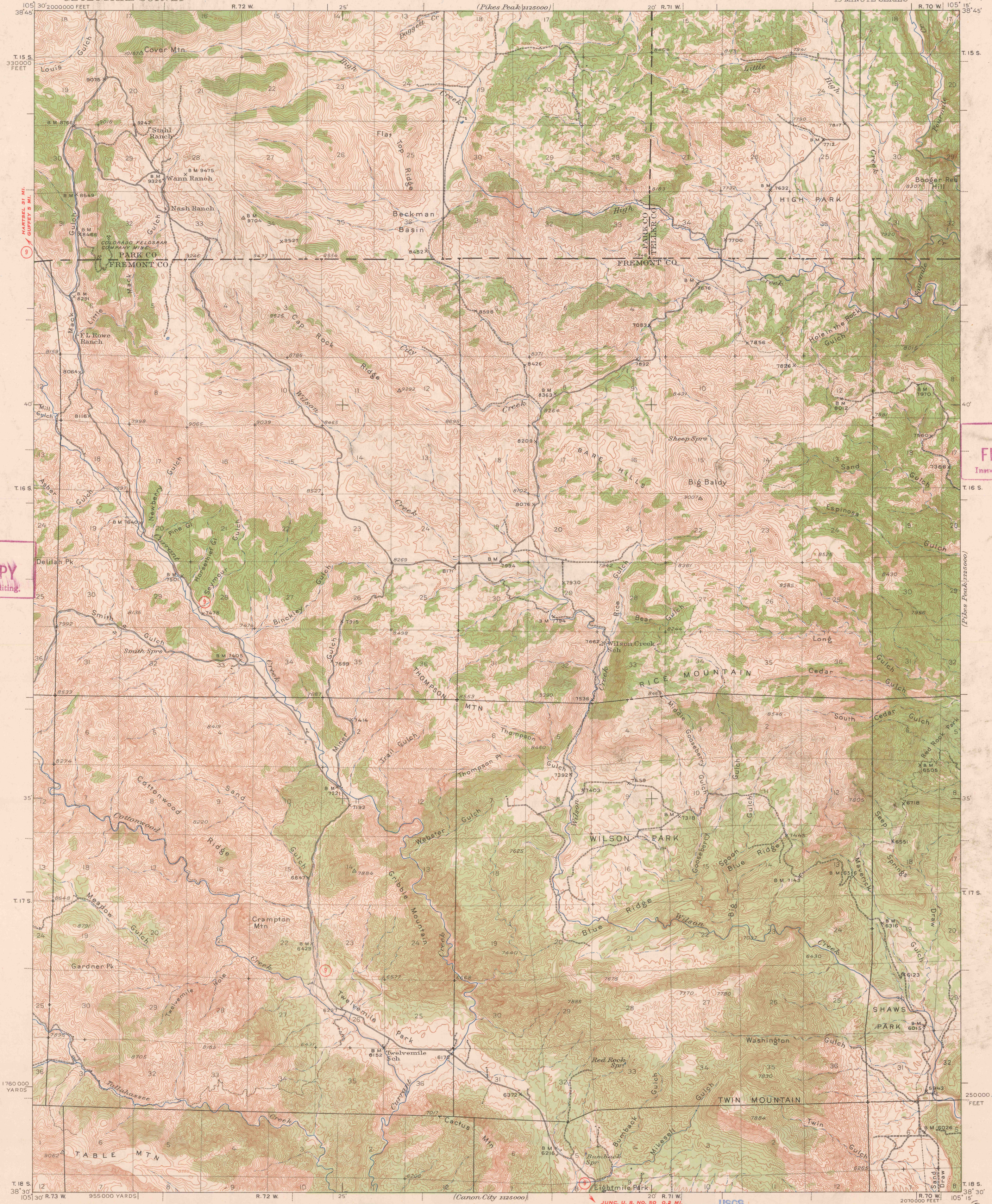


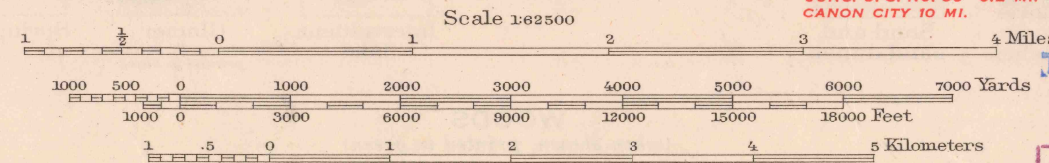
(Pikes Peak)
1250000



(Pikes Peak)
1250000

(Canon City)
1250000

Mapped by the Geological Survey
1942



USGS
Historical File
Topographic Division

Polyconic projection, 1927 North American datum
5000 yard grid based on U.S. zone system, E
10000 foot grid based on Colorado (Central)
rectangular coordinate system

ROAD CLASSIFICATION 1947

Dependable hard-surface heavy-duty road	Dry weather roads	U. S. Route 151
Secondary hard-surface all-weather road	Loose-surface graded	State Route 151
More than two lanes indicated along road with tick at point of change	Unsurfaced, graded dirt road	State Route 151

Contour interval 50 feet
Datum is mean sea level

MAY 11 1948

3150