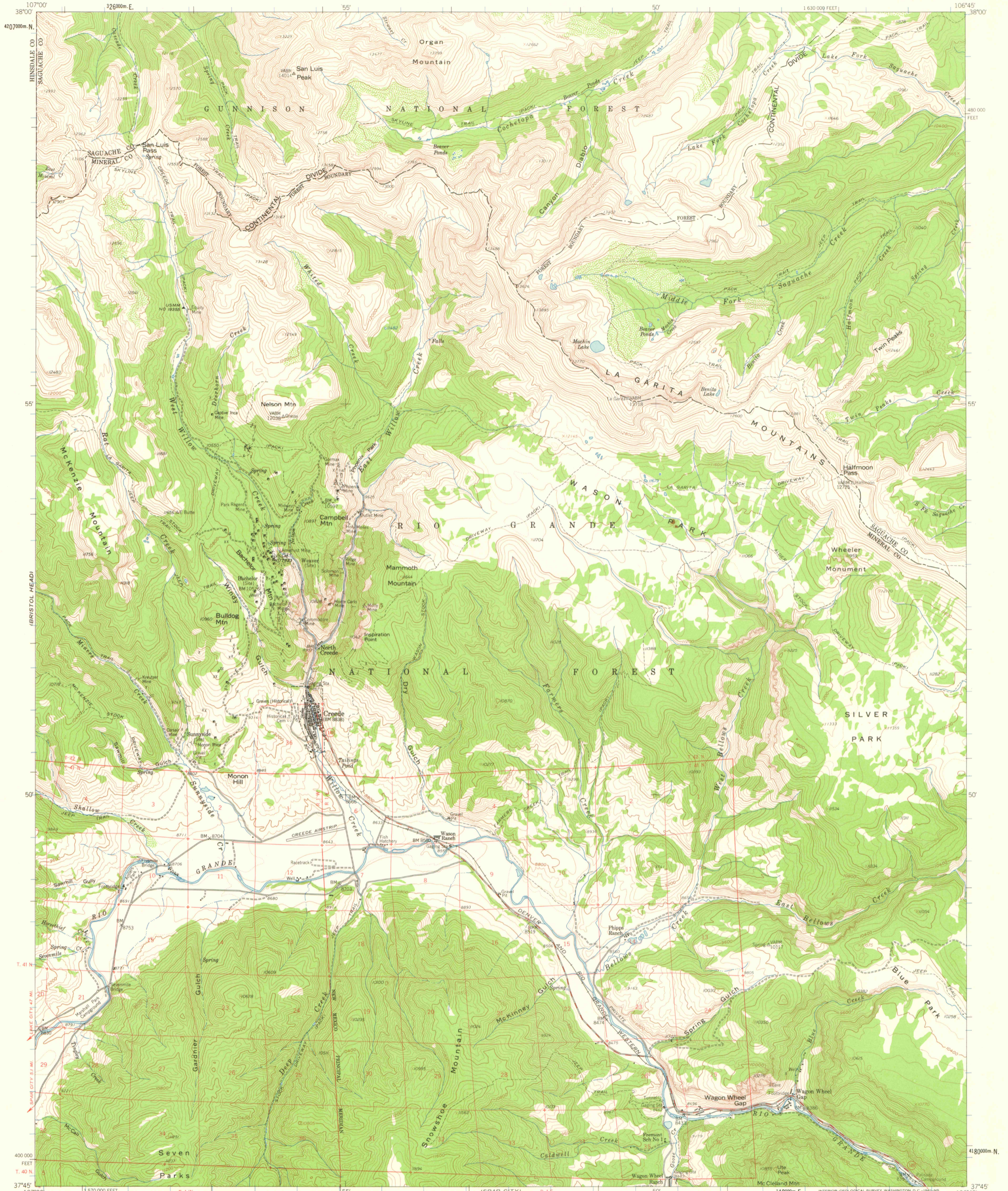


UNCOMPANIED  
1:25,000

UNITED STATES  
DEPARTMENT OF THE INTERIOR  
GEOLOGICAL SURVEY

LIBRARY  
COLORADO SCHOOL OF MINES  
GOLDEN, COLORADO

CREEDE QUADRANGLE  
COLORADO  
15 MINUTE SERIES (TOPOGRAPHIC)

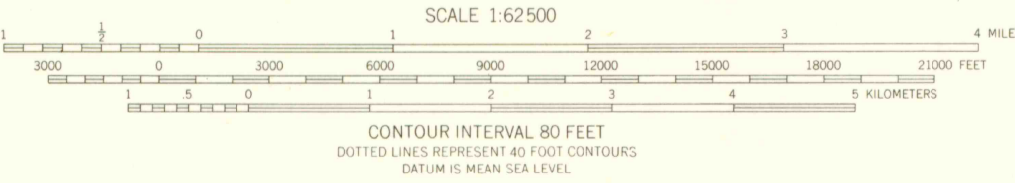


LIBRARY USE ONLY

(SAN CRISTOBAL)  
1:25,000

Mapped, edited, and published by the Geological Survey  
Control by USGS and USC&GS  
Topography from aerial photographs by photogrammetric methods  
Aerial photographs taken 1954. Field check 1959  
Polyconic projection. 1927 North American datum  
10,000-foot grid based on Colorado coordinate system,  
south zone  
1000-meter Universal Transverse Mercator grid ticks,  
zone 13, shown in blue  
Dashed land lines indicate approximate locations  
Land lines omitted except in T. 41 N., R. 1 E., and 1 W.  
and in parts of Ts. 40 and 42 N., R. 1 W. because of insufficient data

TRUE NORTH  
MAGNETIC NORTH  
APPROXIMATE MEAN  
DECLINATION, 1959



THIS MAP COMPLIES WITH NATIONAL MAP ACCURACY STANDARDS  
FOR SALE BY U.S. GEOLOGICAL SURVEY, DENVER 25, COLORADO OR WASHINGTON 25, D.C.  
A FOLDER DESCRIBING TOPOGRAPHIC MAPS AND SYMBOLS IS AVAILABLE ON REQUEST



ROAD CLASSIFICATION  
Medium-duty ——— Light-duty ———  
Unimproved dirt - - - - -  
State Route ○

CREEDE, COLO.  
N3745-W10645/15

G  
3701  
C222  
S62  
U5

OFFICE COPY