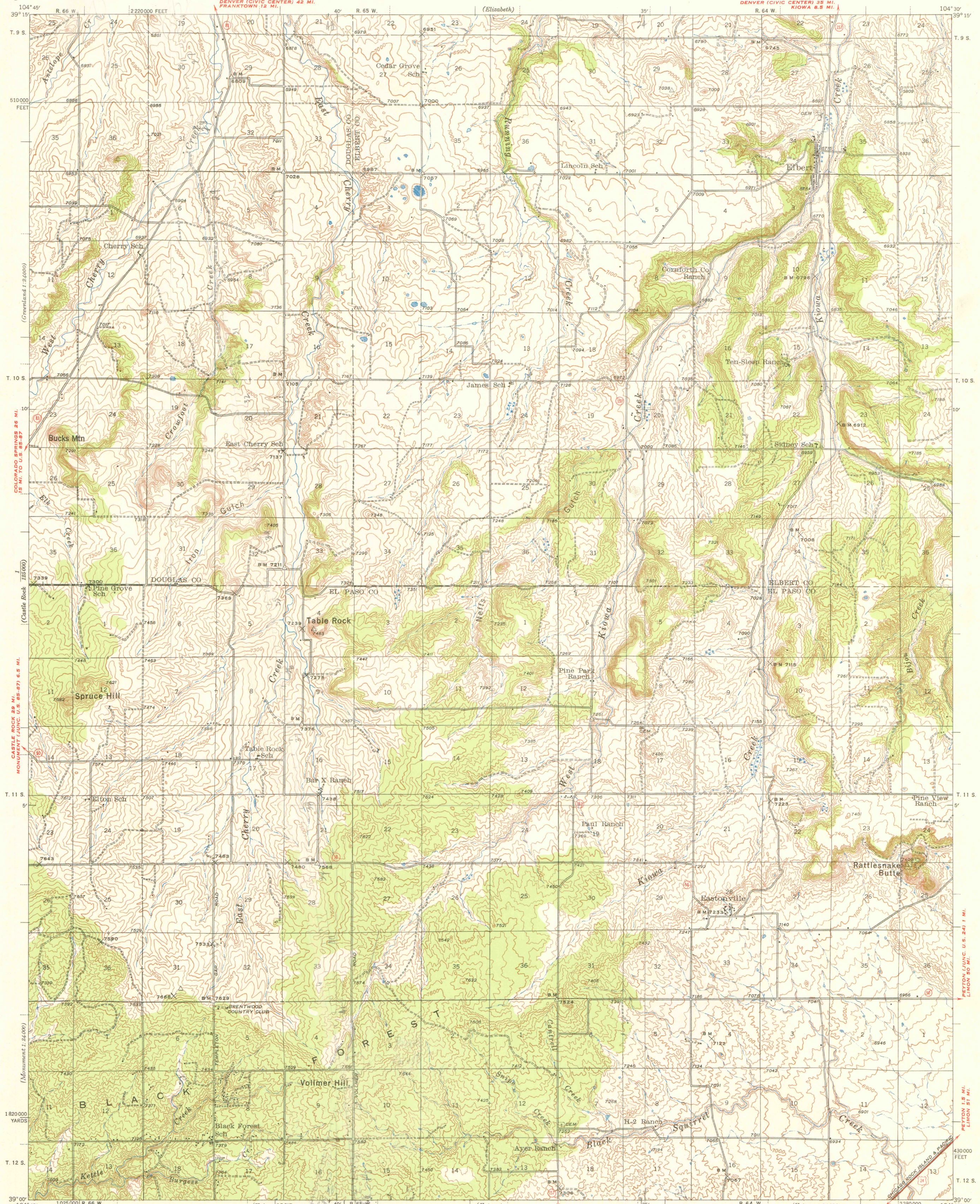


UNITED STATES  
DEPARTMENT OF THE INTERIOR  
GEOLOGICAL SURVEY

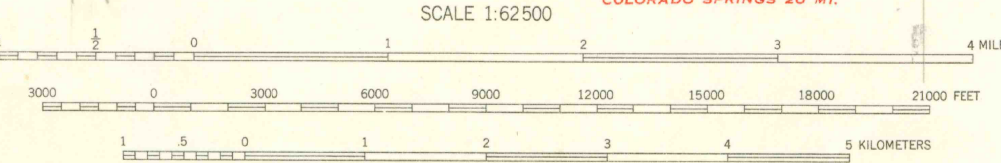
COLORADO  
ELBERT QUADRANGLE  
15-MINUTE SERIES



Topography by T. T. Ranney, C. E. Walker, J. M. Stricklin, L. M. Stevenson, R. G. Carpenter, B. R. Gallegos, W. A. McLaughlin, and D. F. C. Moor. Surveyed in 1933, 1934, 1935, 1939 and 1940.

**ROAD CLASSIFICATION**  
 Heavy-duty ——— 4 LANE 6 LANE Light-duty  
 Medium-duty ——— 4 LANE 6 LANE Unimproved dirt  
 U. S. Route      State Route

APPROXIMATE MEAN DECLINATION, 1940



Contour interval 20 feet  
Datum is mean sea level

FOR SALE BY U. S. GEOLOGICAL SURVEY, FEDERAL CENTER, DENVER, COLORADO OR WASHINGTON 25, D. C.  
A FOLDER DESCRIBING TOPOGRAPHIC MAPS AND SYMBOLS IS AVAILABLE ON REQUEST

Maps of the Cherry Valley School, Black Forest, and Eastonville quadrangles. Scale 1:24,000 from later and more detailed surveys covering the NW, SW, and SE quarters of this area, are available.

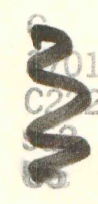
**MAP ROOM**  
ARTHUR LAKES LIBRARY  
COLORADO SCHOOL OF MINES

ELBERT, COLO.

N3900-W10430/15  
1940



OFFICE COPY  
LIBRARY USE ONLY



LIGHT