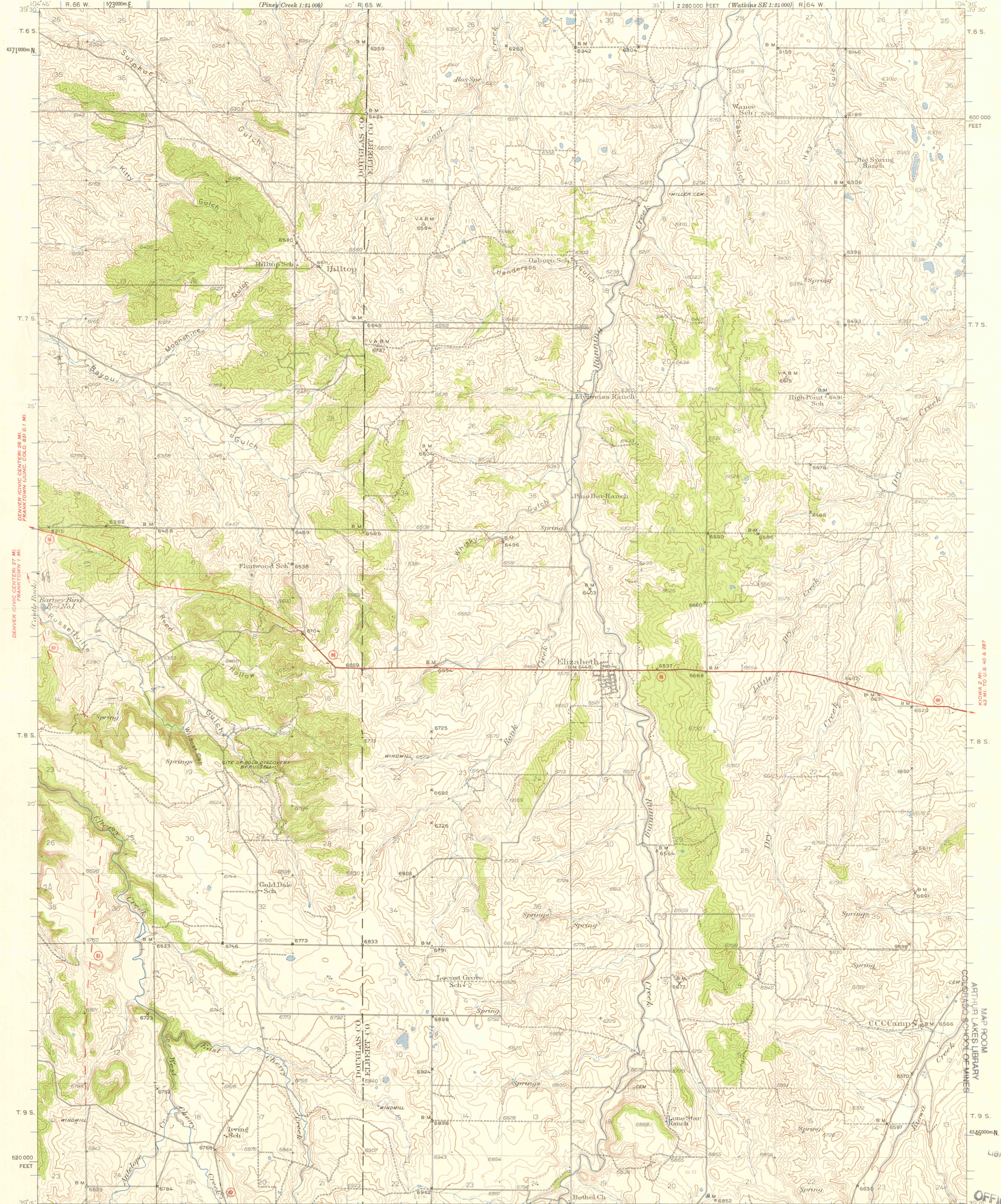


UNITED STATES
DEPARTMENT OF THE INTERIOR
GEOLOGICAL SURVEY

COLORADO
ELIZABETH QUADRANGLE
15-MINUTE SERIES



Topography by S.G. Lunde, R. Elsto, D.F.C. Moor, and Harry Parker. Surveyed 1934, 1938 and 1939.

SCALE 1:62,500
22200 FEET
4 MILES
3000 0 3000 6000 9000 12000 15000 18000 21000 FEET
1 5 0 2 3 4 5 KILOMETERS

INTERIOR—GEOLOGICAL SURVEY, WASHINGTON, D. C.—1958
POLYCONIC PROJECTION, 1927 NORTH AMERICAN DATUM
10,000-FOOT GRID BASED ON COLORADO (CENTRAL)
RECTANGULAR COORDINATE SYSTEM
1000-METER UNIVERSAL TRANSVERSE MERCATOR GRID TICKS,
ZONE 13, SHOWN IN BLUE

ROAD CLASSIFICATION
Heavy-duty ——— Light-duty ———
Medium-duty ——— Unimproved dirt ———
State Route

CONTOUR INTERVAL 20 FEET
DATUM IS MEAN SEA LEVEL
FOR SALE BY U. S. GEOLOGICAL SURVEY, DENVER 2, COLORADO OR WASHINGTON 25, D. C.
A FOLDER DESCRIBING TOPOGRAPHIC MAPS AND SYMBOLS IS AVAILABLE ON REQUEST

ELIZABETH, COLO.
N 39 15' W 104 30' 15

1939

MAP ROOM
ART-HIP LAYERS LIBRARY
COLORADO SCHOOL OF MINES
JAN 14 1939
LIBRARY USE ONLY
OFFICE COPY

3701
0222
S62
U5
05233