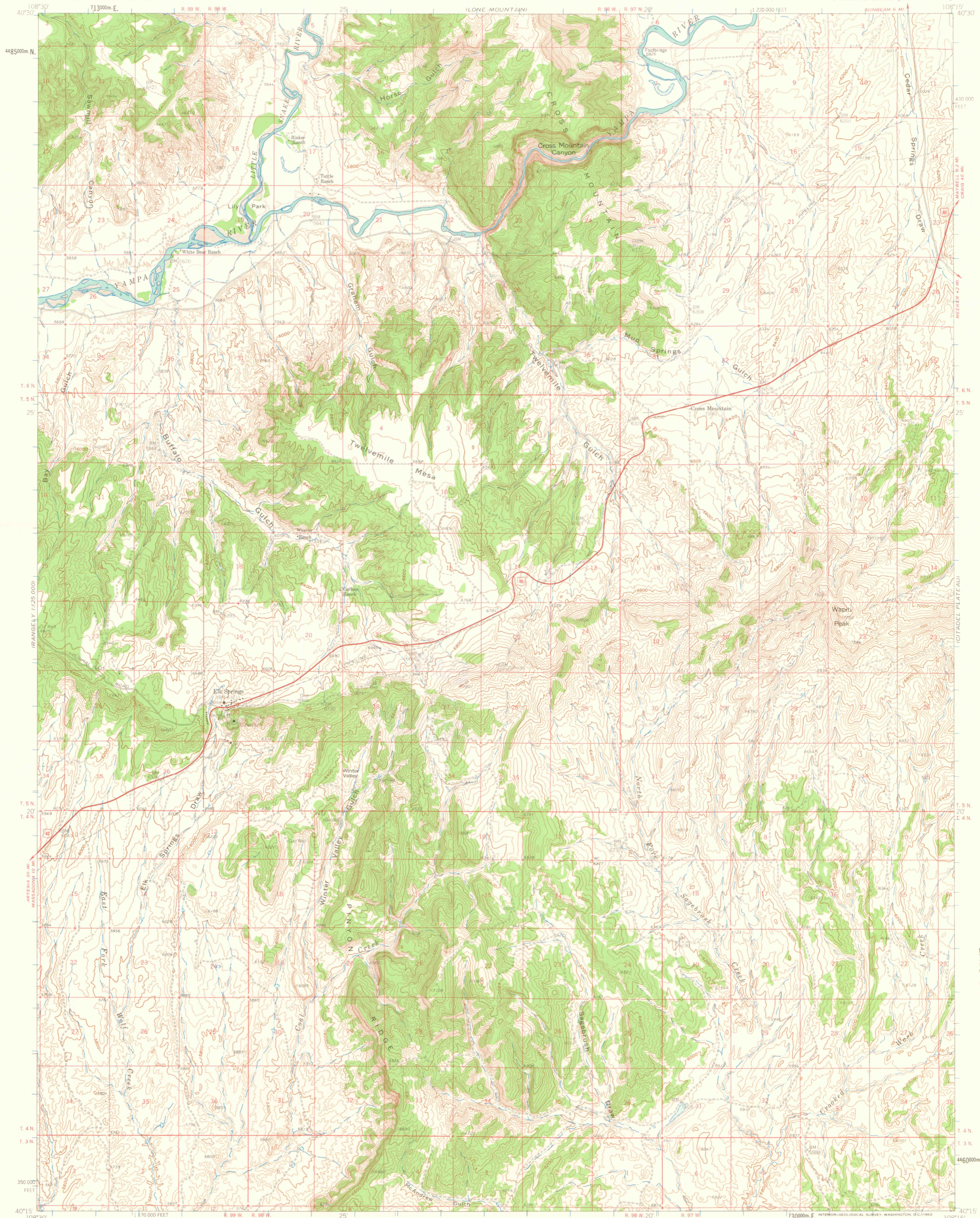
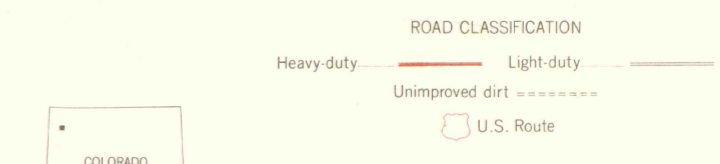
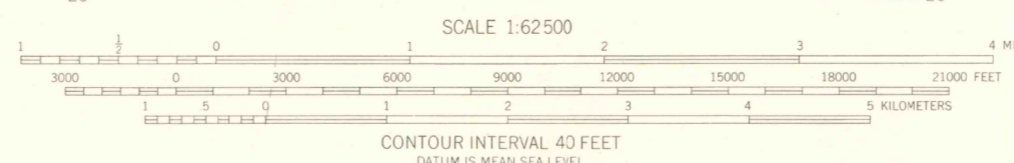
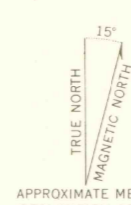


MAYBELL



Mapped, edited, and published by the Geological Survey
Control by USGS and USC & GS
Topography by photogrammetric methods from aerial
photographs taken 1954. Field checked 1960
Polyconic projection. 1927 North American datum
10,000-foot grid based on Colorado coordinate system,
north zone
1000-meter Universal Transverse Mercator grid ticks,
zone 12, shown in blue



THIS MAP COMPLIES WITH NATIONAL MAP ACCURACY STANDARDS
FOR SALE BY U.S. GEOLOGICAL SURVEY, DENVER 25, COLORADO OR WASHINGTON 25, D.C.
A FOLDER DESCRIBING TOPOGRAPHIC MAPS AND SYMBOLS IS AVAILABLE ON REQUEST

ELK SPRINGS, CO. 1960
N4015-W10815/15

OFFICE COPY

LIBRARY USE ONLY

U. S. GOVT
DOCUMENTS
MAY 5 '64
ARTHUR LAKES LIBRARY
COLORADO STATE UNIVERSITY
Ft. Collins, Colorado