

# TOPOGRAPHY

COLORADO  
ENGINEER MOUNTAIN QUADRANGLE

U.S. GEOLOGICAL SURVEY  
GEORGE OTIS SMITH, DIRECTOR

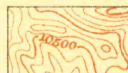


## LEGEND

RELIEF  
printed in brown



Figures  
showing heights above  
mean sea level, instru-  
mentally determined

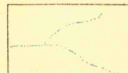


Contours  
showing height above  
sea level, horizontal form,  
and steepness of slope  
of the surface

DRAINAGE  
printed in blue



Streams



Intermittent  
streams



Flumes



Lakes, ponds,  
and reservoirs



Marshes

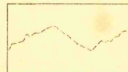
CULTURE  
printed in black



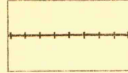
Roads and  
buildings



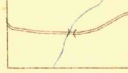
Private and  
secondary roads



Trails



Railroads



Bridges

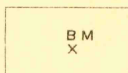
U.S. township and  
section lines and  
located corner



County lines



Triangulation  
stations



Bench marks

LIBRARY USE ONLY

G  
3701  
C222  
S62  
U5

DEPT. OF GEOLOGY  
COLO. SCHOOL MINES  
Working Collection

OFFICE COPY

E. M. Douglas, Geographer in charge.  
Triangulation by E. M. Douglas.  
Topography by W. M. Beaman.  
Surveyed in 1897-98.

Scale 1:25,000  
1 2 3 4 5 Miles  
1 2 3 4 5 Kilometers

Contour interval 100 feet.  
Datum is mean sea level.

Dotted lines show corrected position of meridians and parallels.

Edition of June 1908, reprinted Aug. 1909.

Engineer Mt.