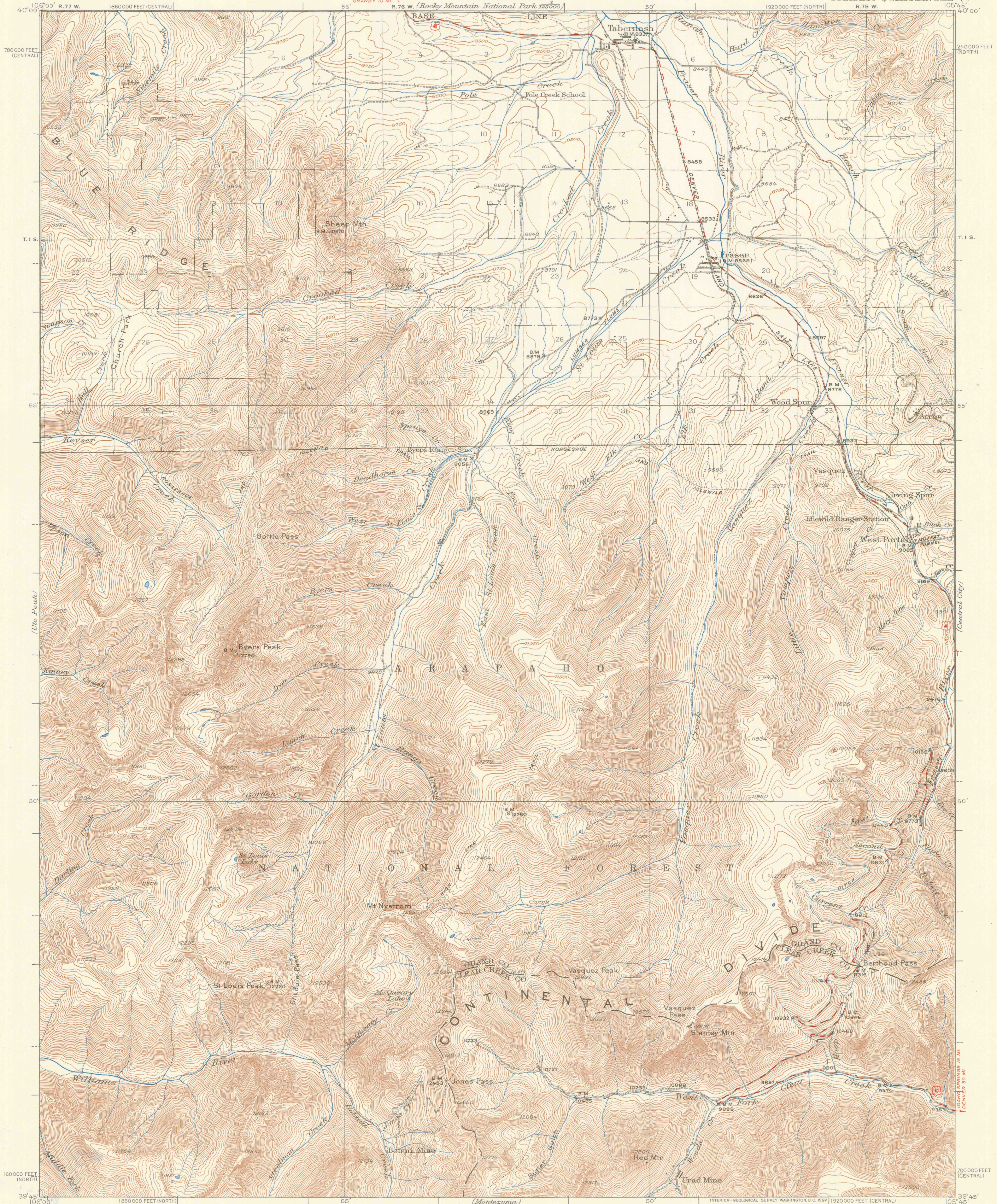


Rocky Mountain
National Park
125,000



Topography by Albert Pike
Surveyed in 1924

TRUE NORTH
MAGNETIC NORTH
APPROXIMATE MEAN
DECLINATION, 1924

SCALE 1:62500
1 2 3 4 MILES
3000 0 3000 6000 9000 12000 15000 18000 21000 FEET
1 2 3 4 5 KILOMETERS

CONTOUR INTERVAL 50 FEET
DATUM IS MEAN SEA LEVEL

FOR SALE BY U.S. GEOLOGICAL SURVEY, FEDERAL CENTER, DENVER, COLORADO OR WASHINGTON 25, D.C.
A FOLDER DESCRIBING TOPOGRAPHIC MAPS AND SYMBOLS IS AVAILABLE ON REQUEST

ROAD CLASSIFICATION
Medium-duty ——— Light-duty ———
Unimproved dirt ———
U. S. Route

FRASER, COLO.
N3945°W10545°E

OFFICE COPY

G 3700
s62
.G4
MAP ROOM