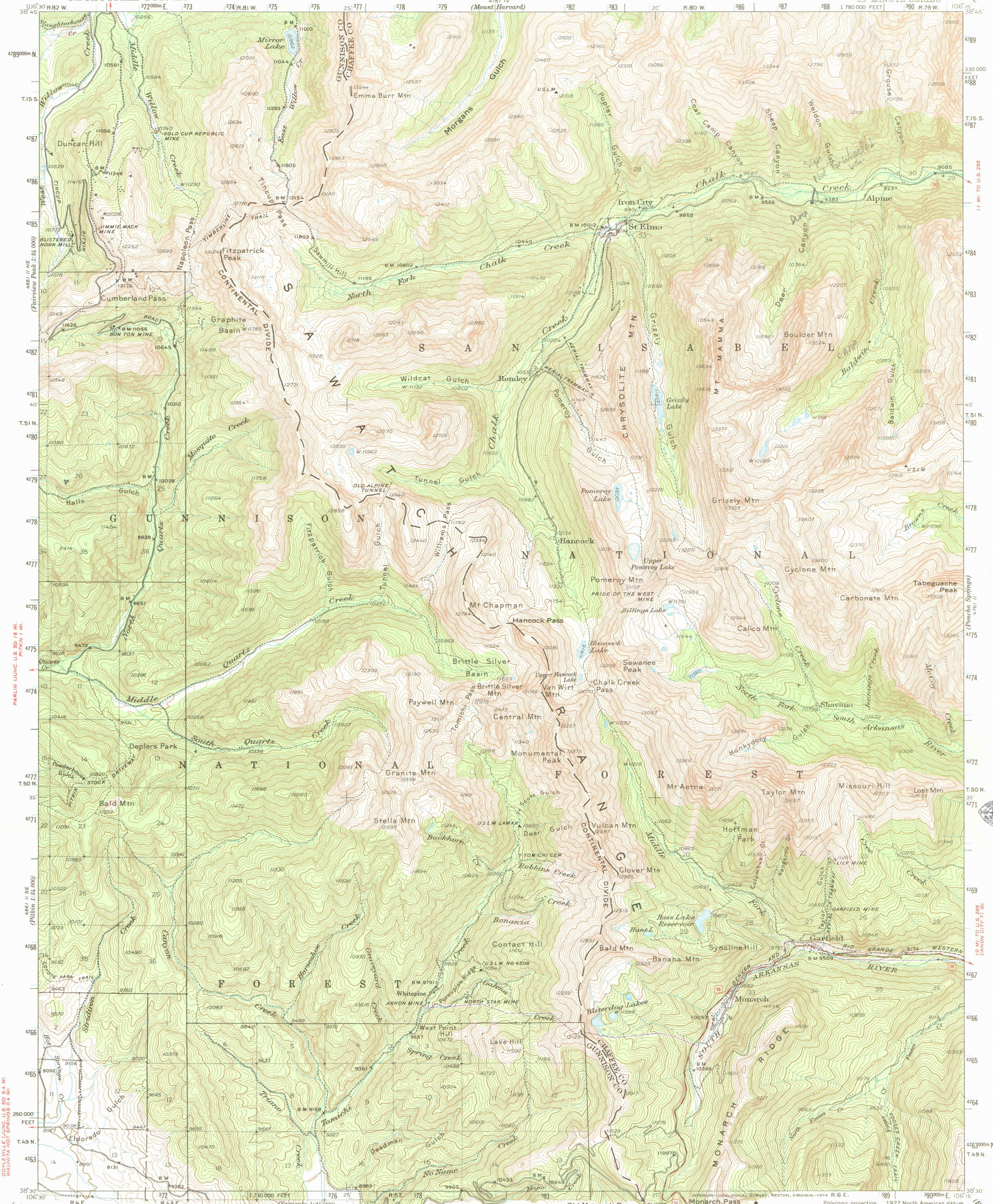


461 SE
(Douglas Fork, River)
1:24,000

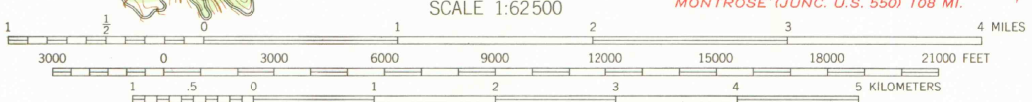
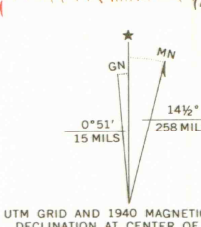
TAYLOR RESERVOIR DAM 13 MI.
TINCUP 0.2 MI.
UNITED STATES
DEPARTMENT OF THE INTERIOR
GEOLOGICAL SURVEY

COLORADO
GARFIELD QUADRANGLE
15-MINUTE SERIES

4761 IV
(Buena Vista)
1:24,000



Topography by Max J. Gleason, M.C. McClellan, F.L. Gregg, and J.M. Stricklin
Surveyed in 1938, 1939, and 1940
Unchecked elevations are shown in brown



Scale 1:62,500
CONTOUR INTERVAL 50 FEET
NATIONAL GEODETIC VERTICAL DATUM OF 1929

ROAD CLASSIFICATION
Medium-duty — Light-duty
Unimproved dirt —
U.S. Route — State Route

FOR SALE BY U.S. GEOLOGICAL SURVEY, DENVER, COLORADO 80225, OR RESTON, VIRGINIA 22092
A FOLDER DESCRIBING TOPOGRAPHIC MAPS AND SYMBOLS IS AVAILABLE ON REQUEST

GARFIELD, COLO.
N3830—W10615/15

1940
ANS 4761 III—SERIES V777

DEC 30 1991

MAP ROOM
ARTHUR L. HANE LIBRARY
COLORADO SCHOOL OF MINES

G
3701
C222
S62
U5

LIBRARY USE ONLY