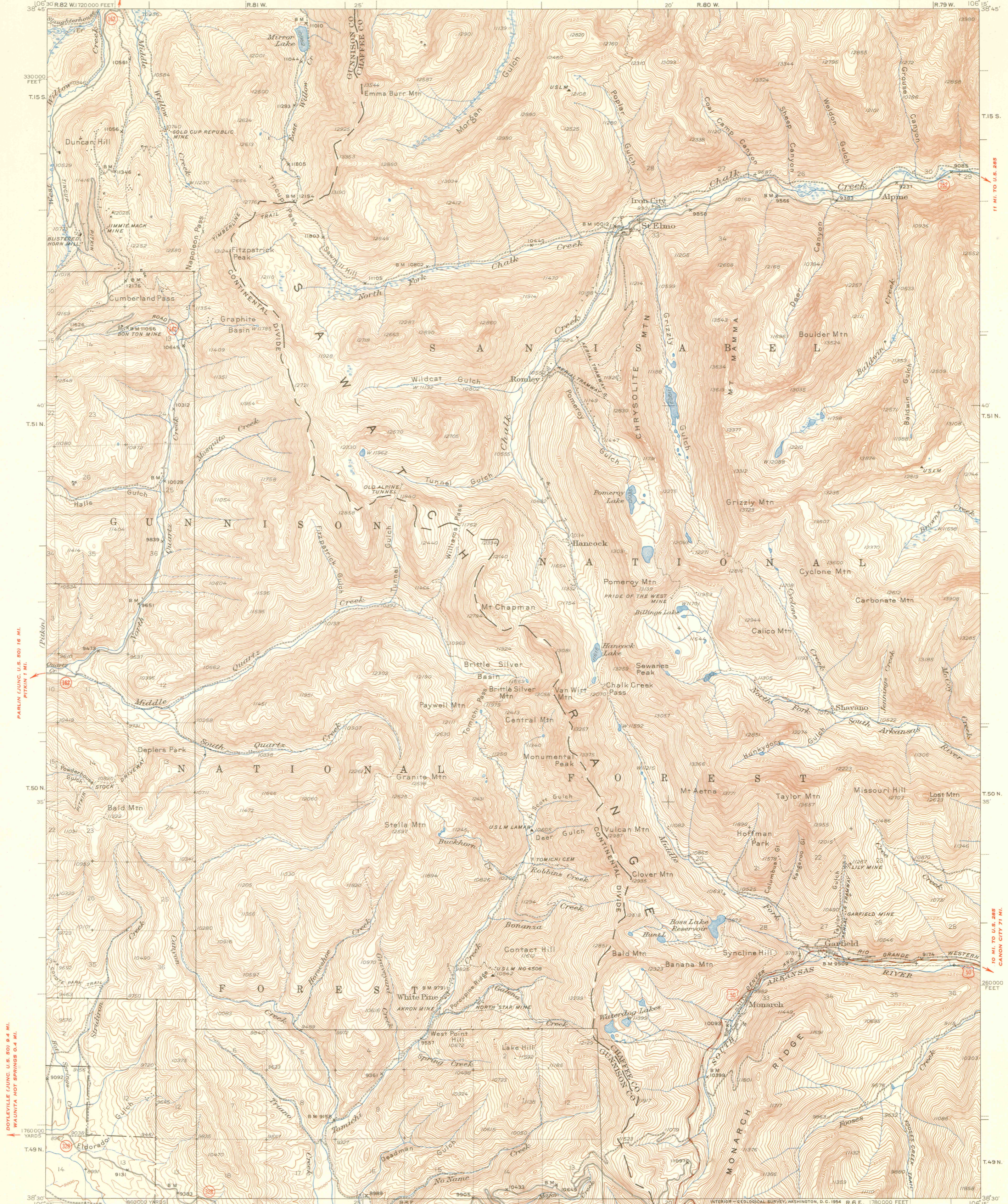


TAYLOR RESERVOIR DAM 13 MI.
TINCUP 0.2 MI.

UNITED STATES
DEPARTMENT OF THE INTERIOR
GEOLOGICAL SURVEY

COLORADO
GARFIELD QUADRANGLE
15-MINUTE SERIES



Topography by Max J. Gleissner, M.C. McClellan,
F.L. Gregg, and J.M. Stricklin
Surveyed in 1938, 1939, and 1940

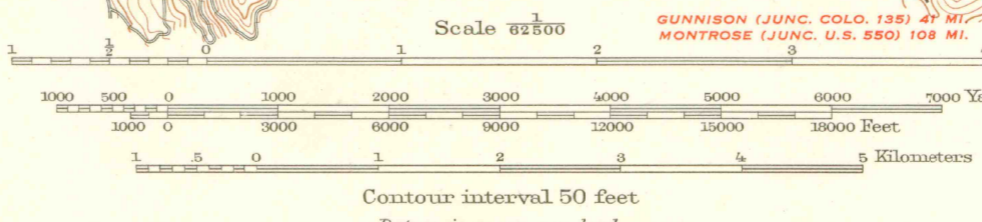
Unchecked elevations are shown in brown

ROAD CLASSIFICATION

Heavy-duty ——— 4 LANE 6 LANE Light-duty ———
Medium-duty ——— 4 LANE 6 LANE Unimproved dirt ———

U.S. Route State Route

APPROXIMATE MEAN
DECLINATION 1940



Certain land lines are omitted
because of insufficient data.
All recovered corners are shown.

GARFIELD, COLO.
N3830-W10165/15

1940
minor corrections made in 1953

FOR SALE BY U.S. GEOLOGICAL SURVEY, FEDERAL CENTER, DENVER, COLORADO OR WASHINGTON 25, D.C.
A FOLDER DESCRIBING TOPOGRAPHIC MAPS AND SYMBOLS IS AVAILABLE ON REQUEST

LIBRARY USE ONLY