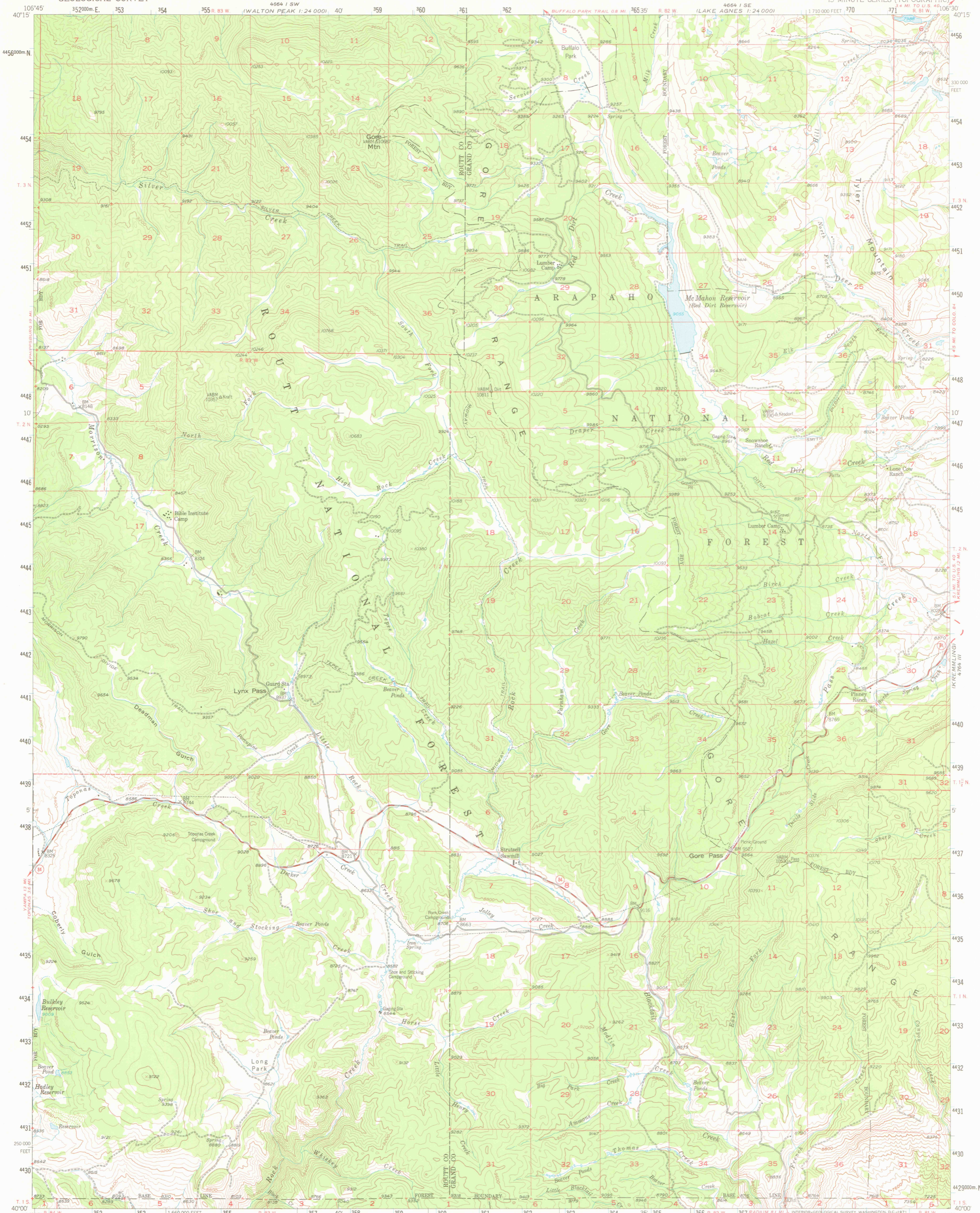
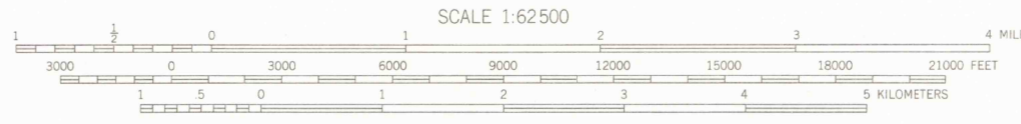
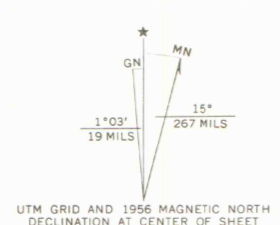


4764 IV SW  
(WHITE PEAK)  
1:24,000



Mapped, edited, and published by the Geological Survey  
Control by USGS and USC&GS  
Topography from aerial photographs by photogrammetric  
methods. Aerial photographs taken 1954. Field check 1956  
Polyconic projection. 1927 North American datum  
10,000-foot grid based on Colorado coordinate system,  
north zone.  
1000-meter Universal Transverse Mercator grid ticks,  
zone 13, shown in blue  
Dashed land lines indicate approximate locations  
Certain land lines are omitted in Ts. 1 and 2 N. R. 83 W.  
because of insufficient data



CONTOUR INTERVAL 80 FEET  
DATUM IS MEAN SEA LEVEL



ROAD CLASSIFICATION  
Medium-duty ——— Light-duty ———  
Unimproved dirt - - - - -  
State Route ○

GORE PASS, COLO.  
14000—W10630/15

1956  
AMS 4664 II—SERIES V777

THIS MAP COMPLIES WITH NATIONAL MAP ACCURACY STANDARDS  
FOR SALE BY U. S. GEOLOGICAL SURVEY, DENVER, COLORADO 80225, OR WASHINGTON, D. C. 20242  
A FOLDER DESCRIBING TOPOGRAPHIC MAPS AND SYMBOLS IS AVAILABLE ON REQUEST

DEC 1 2006

G 3700  
s62  
.G4  
MAP ROOM