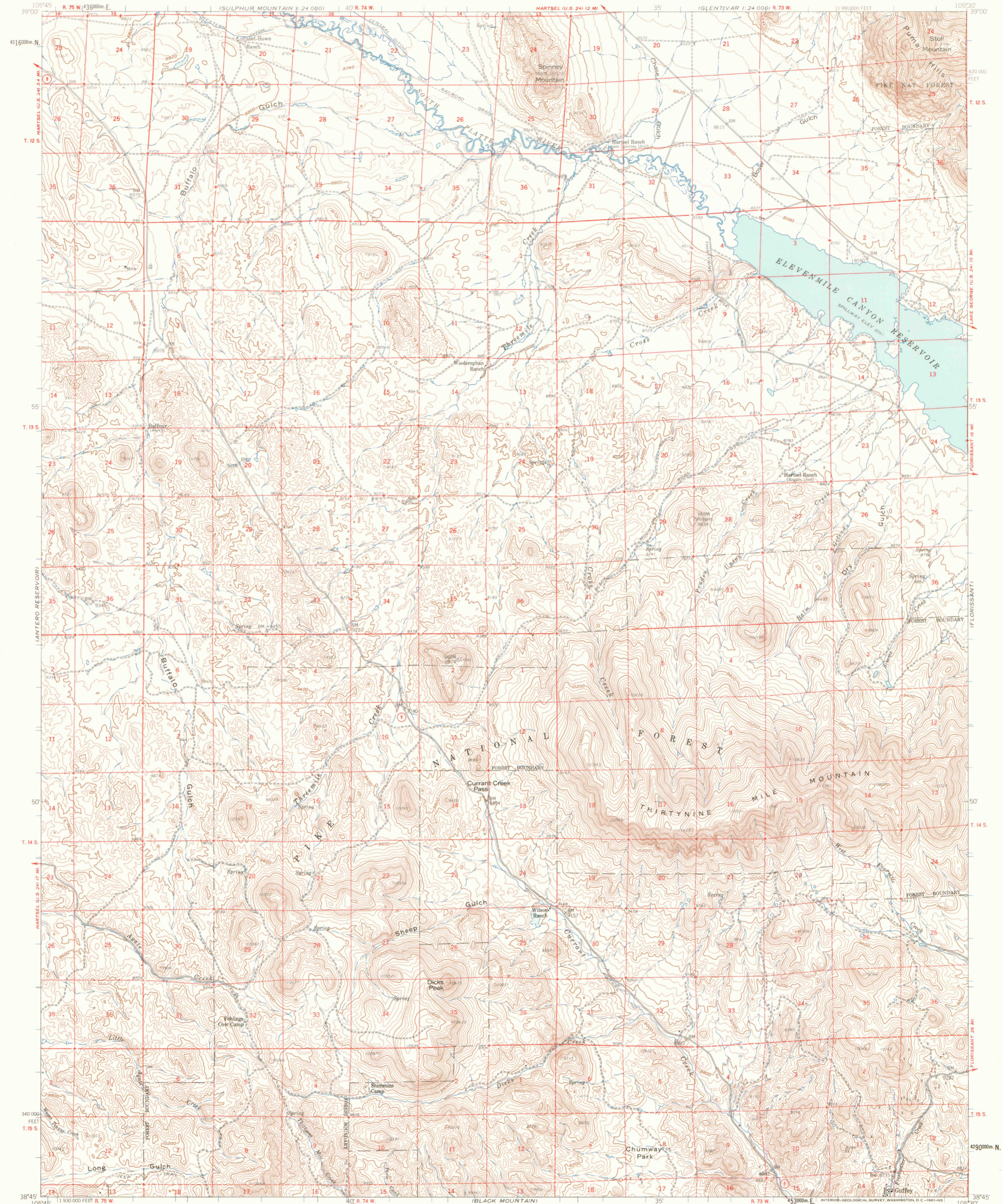
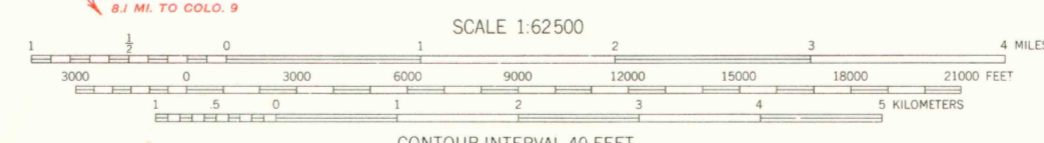
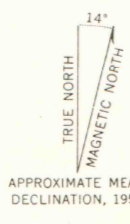


HARTSEL U.S. 24 12 MI.
1:24,000

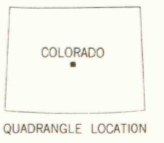
HARTSEL U.S. 24 12 MI.
1:24,000



Mapped, edited, and published by the Geological Survey
Control by USGS and USC&GS
Topography from 1:24,000-scale maps of Spinney Mountain
and Guffey NW 7.5 minute quadrangles, surveyed 1956; and
from aerial photographs by photogrammetric methods.
Aerial photographs taken 1954. Field check 1959.
Polyconic projection. 1927 North American datum.
10,000-foot grid based on Colorado coordinate system,
central zone.
1000-meter Universal Transverse Mercator grid ticks,
zone 13, shown in blue.
Dashed land lines indicate approximate locations.



CONTOUR INTERVAL 40 FEET
DOTTED LINES REPRESENT 20 FOOT CONTOURS
DATUM IS MEAN SEA LEVEL



ROAD CLASSIFICATION
Light-duty ——— Unimproved dirt - - - - -

State Route

The north half of this area also covered by
1:24,000-scale maps of Spinney Mountain
and Guffey NW 7.5 minute quadrangles,
surveyed 1956.

GUFFEY, COLO.
N3845-W10530/15

1959

THIS MAP COMPLIES WITH NATIONAL MAP ACCURACY STANDARDS
FOR SALE BY U.S. GEOLOGICAL SURVEY, DENVER 25, COLORADO OR WASHINGTON 25, D.C.
A FOLDER DESCRIBING TOPOGRAPHIC MAPS AND SYMBOLS IS AVAILABLE ON REQUEST

LIBRARY USE ONLY

G
3701
C222
S62
U5

OFFICE COPY

DEPT. OF GEOL.
COLO. SCHOOL M.
Reference Collecti