

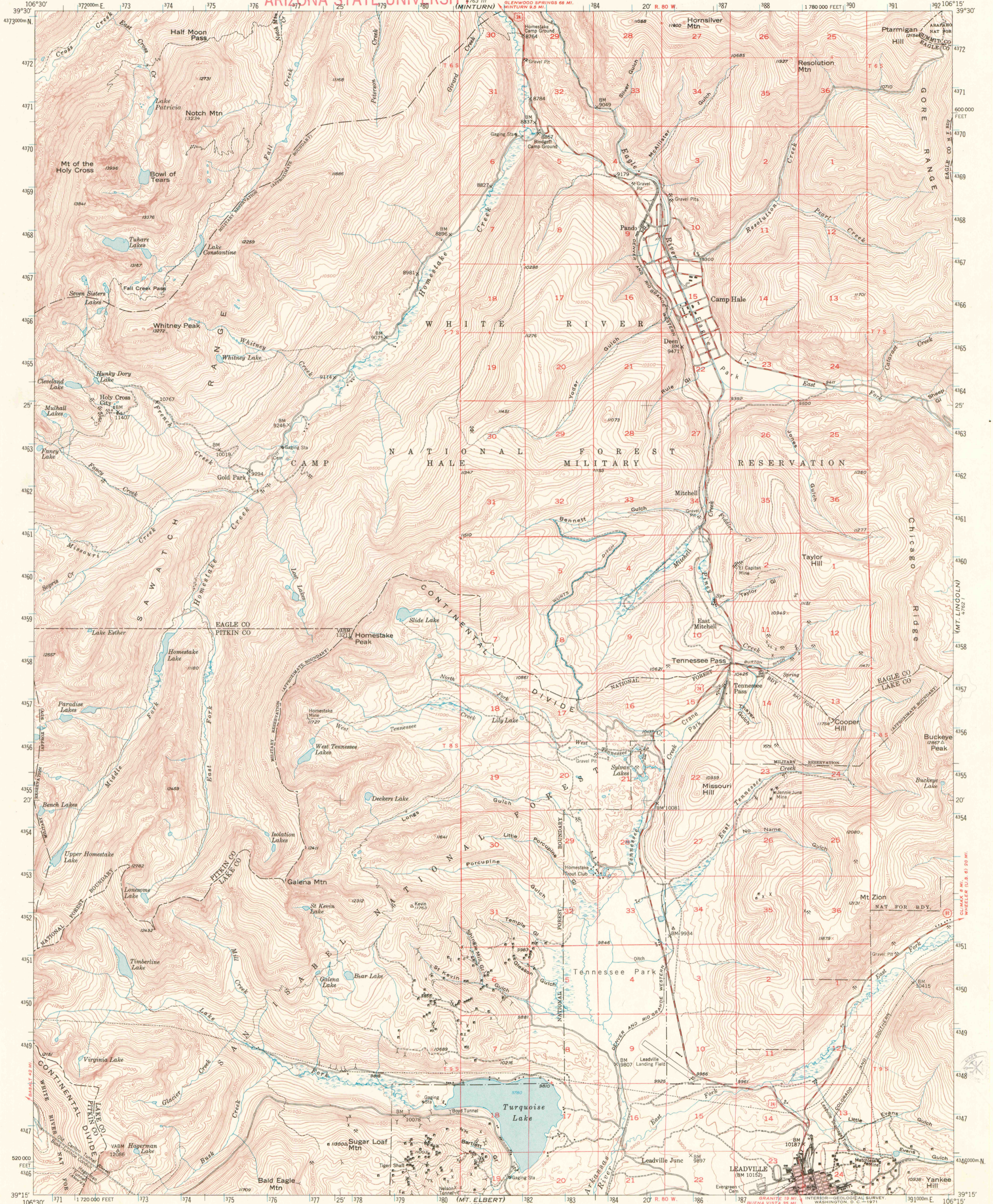
492 1/2 NE (MT. CHAMPION)
124 000

UNITED STATES
DEPARTMENT OF THE INTERIOR
GEOLOGICAL SURVEY

DEPARTMENT OF GEOLOGY
ARIZONA STATE UNIVERSITY

HOLY CROSS QUADRANGLE
COLORADO
15 MINUTE SERIES (TOPOGRAPHIC)

492 1/2 NE (MOUNT LINCOLN)
124 000



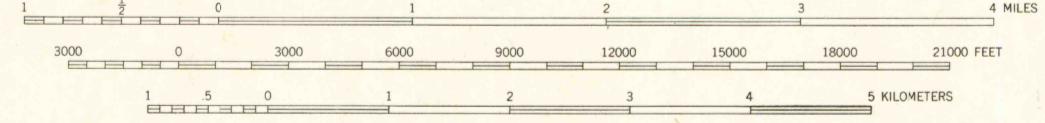
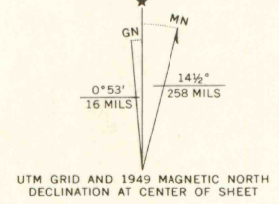
Mapped, edited, and published by the Geological Survey
Control by USGS and USC&GS

Topography from aerial photographs by multiplex methods
Aerial photographs taken August 1944. Field check 1949
Polyconic projection. 1927 North American datum
10,000-foot grid based on Colorado coordinate system,
central zone

Land lines unsurveyed in T. 7, 9 S.-R. 79 W.,
T. 6, 8, 9 S.-R. 81 W., and T. 6, 7, 8, 9 S.-R. 82 W.
Land lines omitted in T. 6, 8 S.-R. 79 W. and
T. 7 S.-R. 81 W., because of insufficient data

Red tint indicates area in which only
landmark buildings are shown

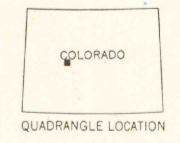
1000-meter Universal Transverse Mercator grid ticks,
zone 13, shown in blue



CONTOUR INTERVAL 50 FEET
DATUM IS MEAN SEA LEVEL

THIS MAP AVAILABLE WITH OR WITHOUT SHADED RELIEF OVERPRINT
FOR SALE BY U. S. GEOLOGICAL SURVEY, DENVER, COLORADO 80225 OR WASHINGTON, D. C. 20242
A FOLDER DESCRIBING TOPOGRAPHIC MAPS AND SYMBOLS IS AVAILABLE ON REQUEST

ROAD CLASSIFICATION
Medium-duty ——— Light-duty ———
Unimproved dirt - - - - -
U. S. Route ——— State Route ———



HOLY CROSS, COLO.
N3915-W10615/15

1949
AMS 4762 IV-SERIES V777

OFFICE COPY
LIBRARY USE ONLY

MAR 22 2005

G 3700
962
.G4
MAP ROOM