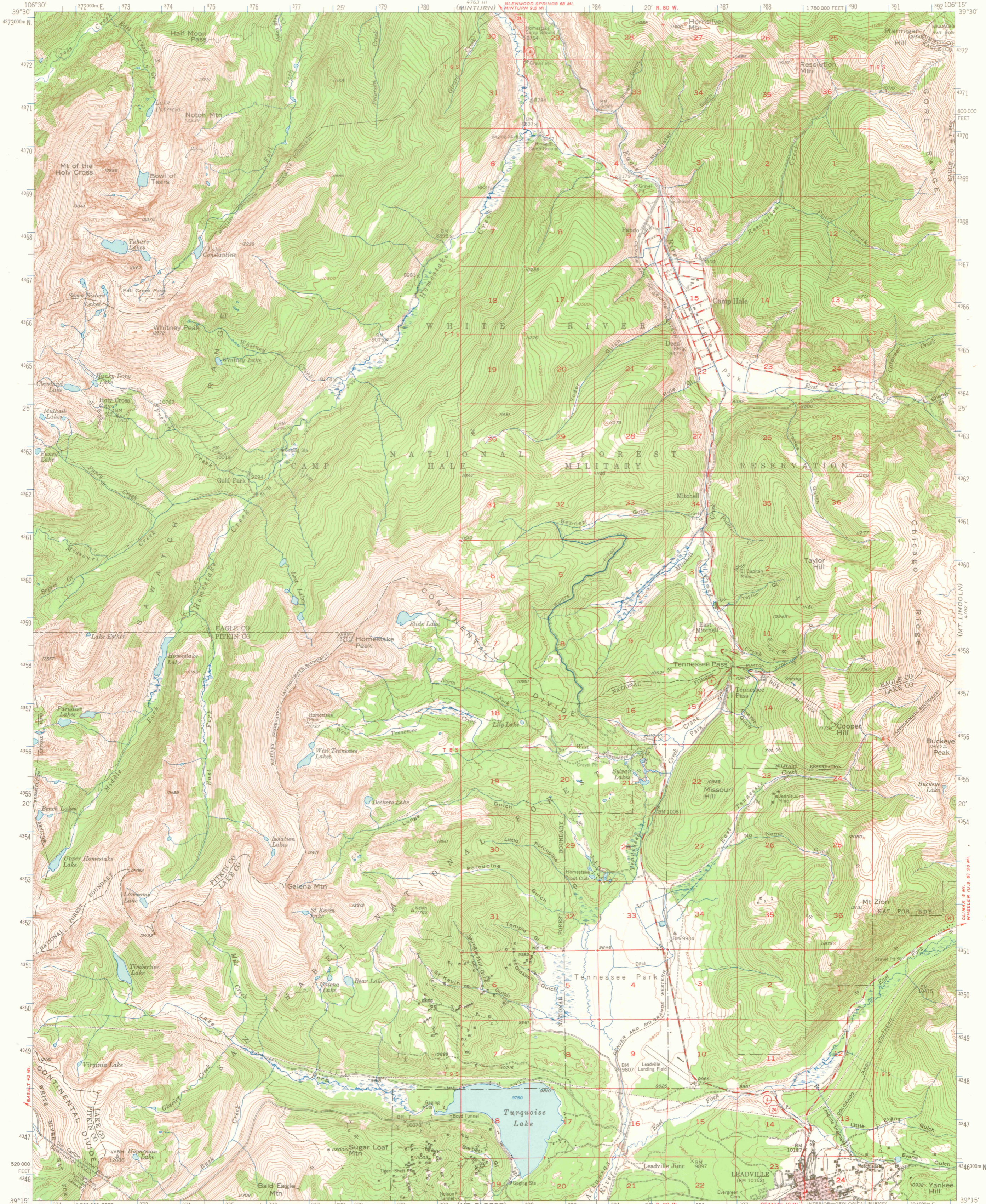
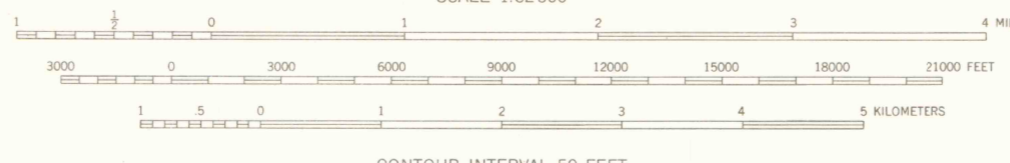
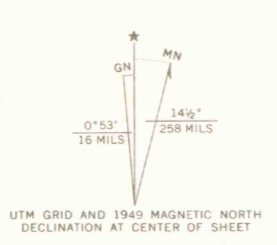


UNITED STATES  
DEPARTMENT OF THE INTERIOR  
GEOLOGICAL SURVEY

HOLY CROSS QUADRANGLE  
COLORADO  
15 MINUTE SERIES (TOPOGRAPHIC)



Mapped, edited, and published by the Geological Survey  
Control by USGS and USC&GS  
Topography from aerial photographs by multiplex methods  
Aerial photographs taken August 1944. Field check 1949  
Polyconic projection. 1927 North American datum  
10,000-foot grid based on Colorado coordinate system,  
central zone  
Land lines unsurveyed in T. 7.9 S.-R. 79 W.,  
T. 6.9 S.-R. 81 W., and T. 6.7 S.-R. 82 W.  
Land lines omitted in T. 6.8 S.-R. 79 W. and  
T. 7. S.-R. 81 W., because of insufficient data  
Red tint indicates area in which only  
landmark buildings are shown  
1000-meter Universal Transverse Mercator grid ticks,  
zone 13, shown in blue



CONTOUR INTERVAL 50 FEET  
DATUM IS MEAN SEA LEVEL

ROAD CLASSIFICATION  
Medium-duty ——— Light-duty ———  
Unimproved dirt - - - - -  
U.S. Route ——— State Route ———



HOLY CROSS, COLO.  
N3915-W10615/15  
1949  
AMS 4762 IV-SERIES V777

THIS MAP AVAILABLE WITH OR WITHOUT SHADED RELIEF OVERPRINT  
FOR SALE BY U.S. GEOLOGICAL SURVEY, DENVER, COLORADO 80225 OR WASHINGTON, D. C. 20242  
A FOLDER DESCRIBING TOPOGRAPHIC MAPS AND SYMBOLS IS AVAILABLE ON REQUEST

OFFICE COPY  
LIBRARY USE ONLY

G 3700  
s62  
.64  
MAP ROOM