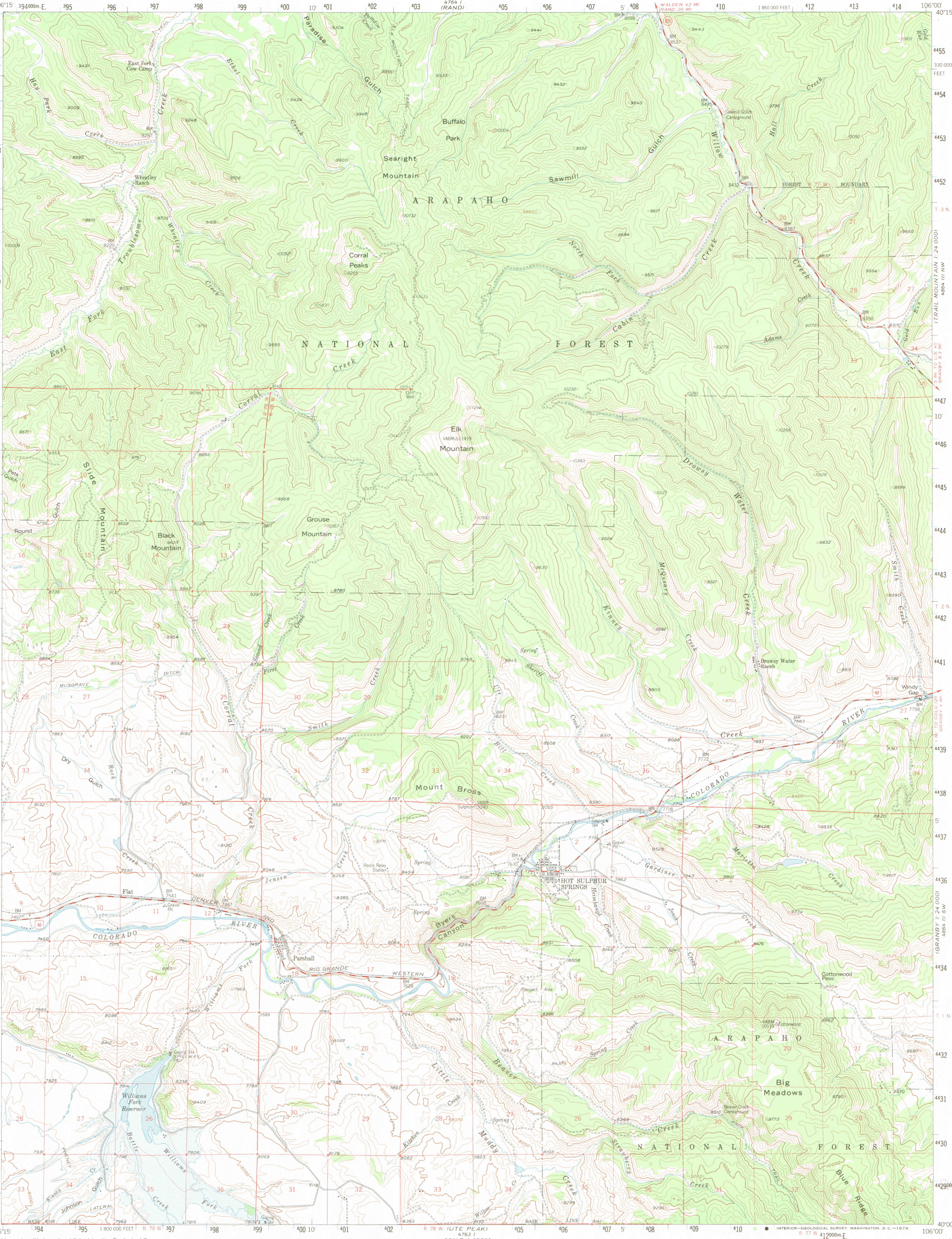
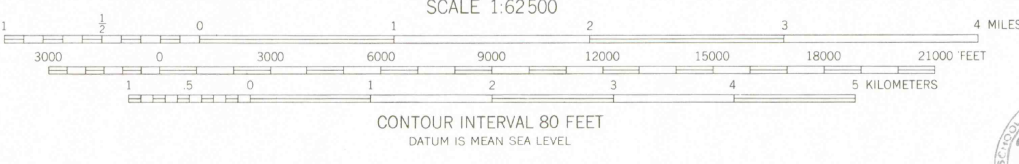
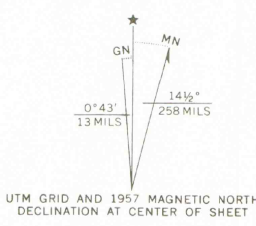


UNITED STATES
DEPARTMENT OF THE INTERIOR
GEOLOGICAL STATES

HOT SULPHUR SPRINGS QUADRANGLE
COLORADO-GRAND CO.
15 MINUTE SERIES (TOPOGRAPHIC)



Maped, edited, and published by the Geological Survey
Control by USGS and USC&GS
Topography from aerial photographs by photogrammetric methods
Aerial photographs taken 1954. Field check 1957
Polyconic projection. 1927 North American datum
10,000-foot grid based on Colorado coordinate system, north zone
1,000-meter Universal Transverse Mercator grid ticks,
zone 13, shown in blue
Dashed land lines indicate approximate locations
Land lines omitted in T. 3 N.-Rs. 78 and 79 W. and in parts of
Ts. 1, 2 and 3 N.-R. 77 W. and T. 2 N.-R. 78 W.
because of insufficient data
Blue hatching indicates area to be flooded by Williams Fork Reservoir
(Normal pool elevation 7811)
Unchecked elevations are shown in brown



ROAD CLASSIFICATION
Medium-duty ——— Light-duty ———
Unimproved dirt ———
U.S. Route ——— State Route ———

THIS MAP COMPLIES WITH NATIONAL MAP ACCURACY STANDARDS
FOR SALE BY U. S. GEOLOGICAL SURVEY, DENVER, COLORADO 80225 OR WASHINGTON, D. C. 20242
A FOLDER DESCRIBING TOPOGRAPHIC MAPS AND SYMBOLS IS AVAILABLE ON REQUEST

QUADRANGLE LOCATION
COLORADO

HOT SULPHUR SPRINGS, COLO.
N4000-W10600/15

1957

AMS 4764 II-SERIES V777

JUL 16 1999
MAP ROOM
ARTHUR LAKES LIBRARY
COLORADO SCHOOL OF MINES

LIBRARY USE ONLY

ICE COPY

G
3701
C222
S62
U5