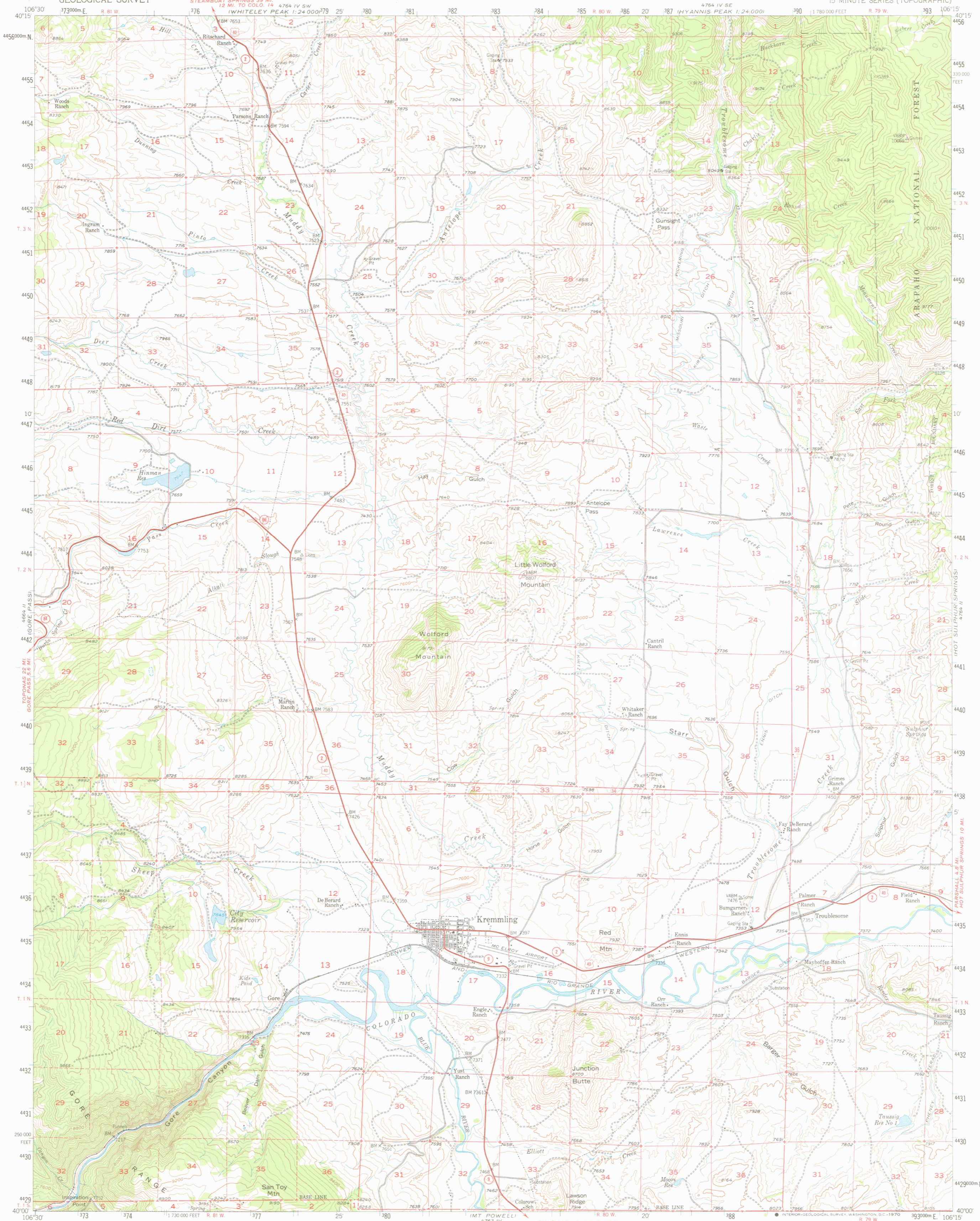


SCALE 1:24,000  
U.S. GEOLOGICAL SURVEY

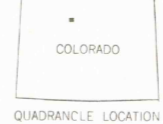
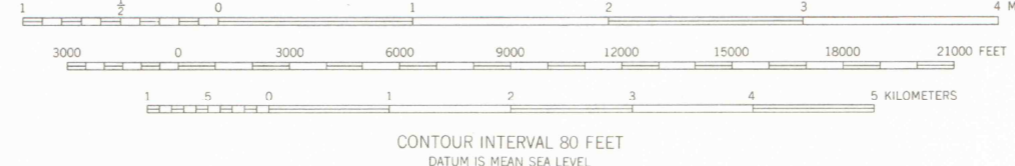
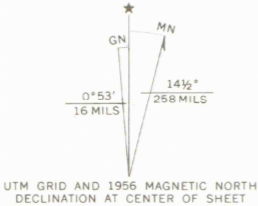
UNITED STATES  
DEPARTMENT OF THE INTERIOR  
GEOLOGICAL SURVEY

KREMMLING QUADRANGLE  
COLORADO-GRAND CO  
15 MINUTE SERIES (TOPOGRAPHIC)

SCALE 1:24,000  
U.S. GEOLOGICAL SURVEY



Mapped, edited, and published by the Geological Survey  
Control by USGS, USC&GS, and USBR  
Topography from aerial photographs by photogrammetric methods  
Aerial photographs taken 1954. Field check 1956  
Polyconic projection 1927 North American datum  
10,000-foot grid based on Colorado coordinate system,  
north zone  
1000-meter Universal Transverse Mercator grid ticks,  
zone 13, shown in blue  
Dashed land lines indicate approximate locations  
Land lines are omitted in T. 3 N.-R. 79 W.  
because of insufficient data



THIS MAP COMPLIES WITH NATIONAL MAP ACCURACY STANDARDS  
FOR SALE BY U. S. GEOLOGICAL SURVEY, DENVER, COLORADO 80225 OR WASHINGTON, D. C. 20242  
A FOLDER DESCRIBING TOPOGRAPHIC MAPS AND SYMBOLS IS AVAILABLE ON REQUEST

KREMMLING COLO.  
N4000-W10615/15

1956  
AMS 4764 III-SERIES V777

ARTHUR LAKES LIBRARY  
MAP ROOM  
MAR 27 1980

LIBRARY USE ONLY

OFFICE COPY