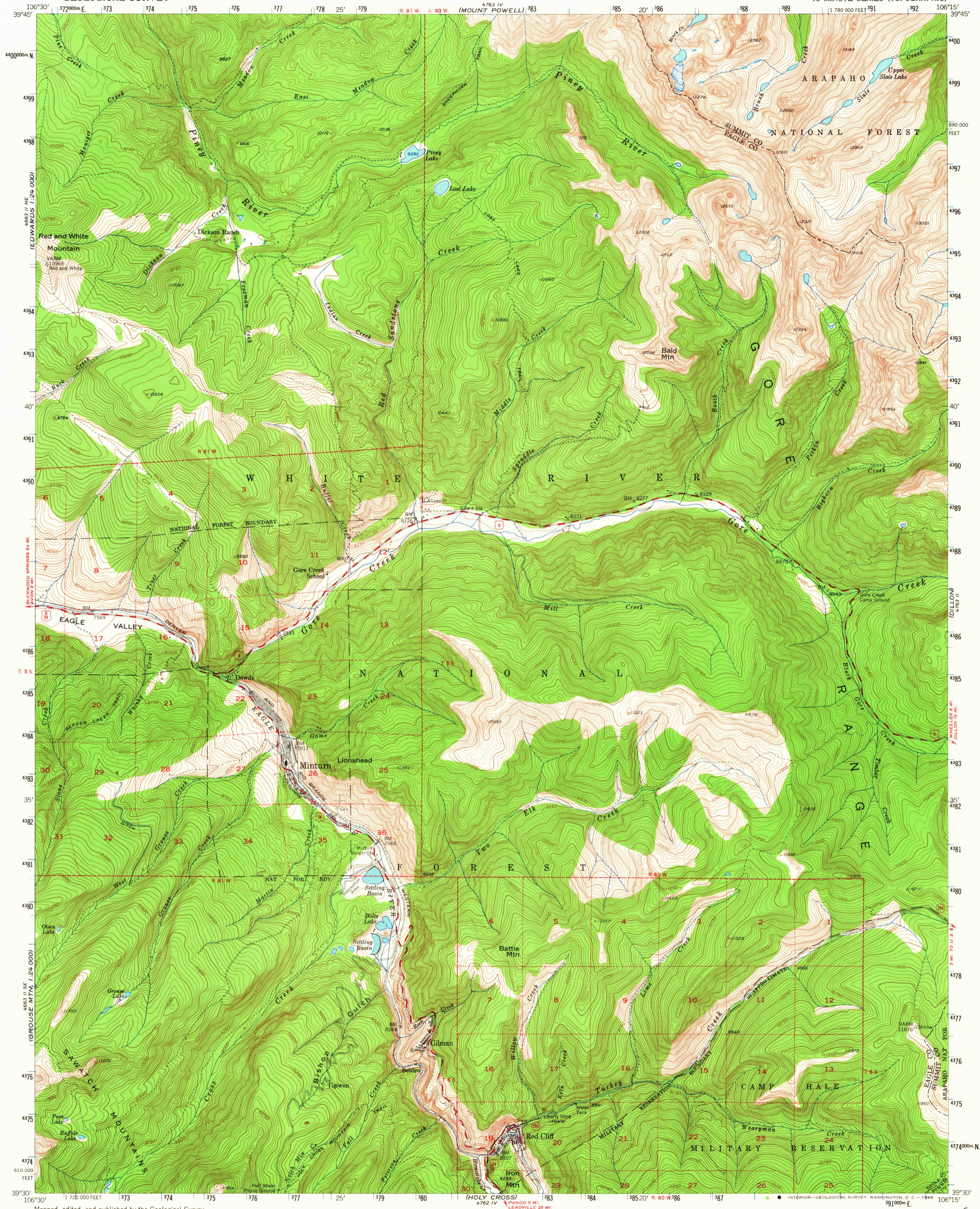
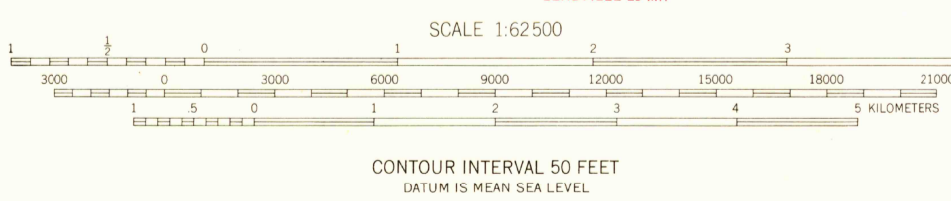
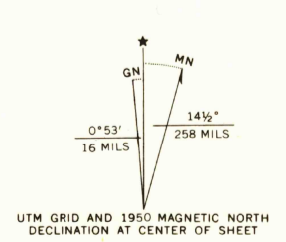


4763 IV
UTE PEAK



Mapped, edited, and published by the Geological Survey
Control by USGS and USC&GS
Topography by plane-table surveys 1930,
partial revision from aerial photographs
by multiple methods 1949. Aerial
photographs taken 1938. Culture revision
by plane-table surveys 1950
Polyconic projection. 1927 North American datum
10,000-foot grid based on Colorado coordinate system,
central zone
Dashed land lines indicate approximate locations
Certain land lines are omitted in T. 4 S.
and T. 5 S., R. 80 W., and in parts of T. 3 S., R. 81 W.,
and T. 4 S., R. 81 W., and T. 3 S., R. 79 W., T. 4 S.,
R. 79 W., T. 5 S., R. 79 W., and T. 6 S., R. 79 W.
because of insufficient data
1000-meter Universal Transverse Mercator grid ticks,
zone 13, shown in blue



USGS
Historical File
Topographic Division

ROAD CLASSIFICATION	
Heavy-duty	4 LANE 6 LANE Light-duty
Medium-duty	2 LANE 6 LANE Unimproved dirt
U.S. Route	Slate Route

FOR SALE BY U.S. GEOLOGICAL SURVEY, DENVER, COLORADO 80225 OR WASHINGTON, D. C. 20242
A FOLDER DESCRIBING TOPOGRAPHIC MAPS AND SYMBOLS IS AVAILABLE ON REQUEST

U.S.G.S.
FILE COPY
TOPOGRAPHIC DIVISION

MINTURN, COLO.
N3930-W10615/15
1950
MINOR CORRECTIONS MADE 1950
AMS 4763 III—SERIES V777

6330
MAR 11 1966