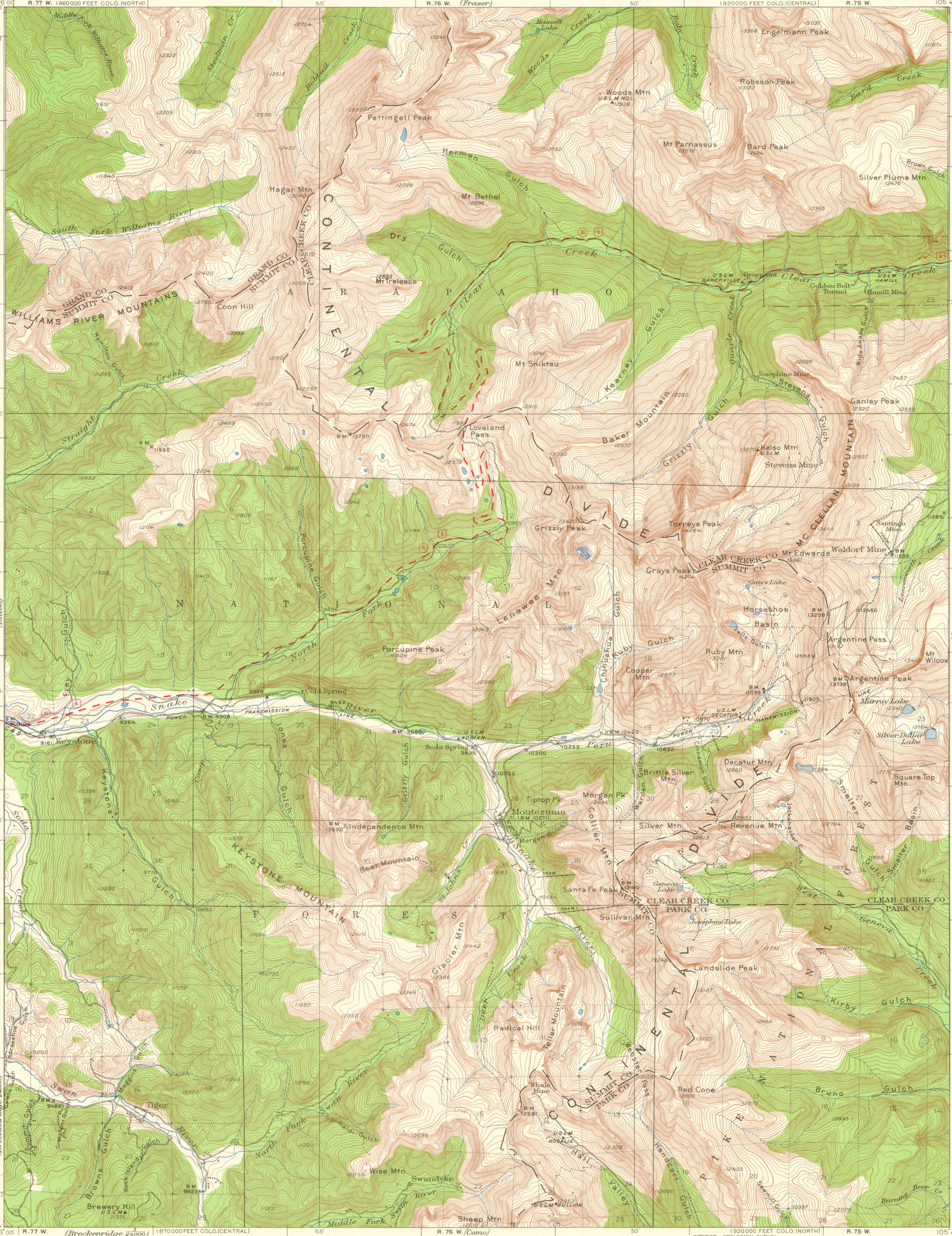


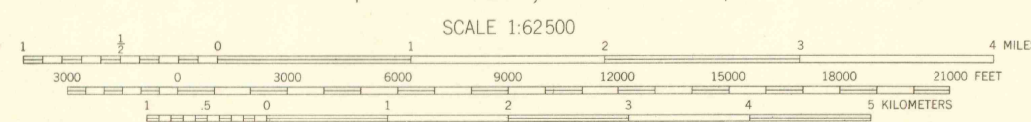
UNITED STATES
DEPARTMENT OF THE INTERIOR
GEOLOGICAL SURVEY

STATE OF COLORADO
REPRESENTED BY THE
STATE ENGINEER

COLORADO
MONTEZUMA QUADRANGLE



Topography by Albert Pike, H.H. Hodgeson, Max J. Gleissner,
and from Breckenridge special map
Surveyed in 1924
Partial revision in 1933



ROAD CLASSIFICATION
Heavy-duty ——— 2 LANE 16 LANE Light-duty ———
Medium-duty ——— 2 LANE 16 LANE Unimproved dirt ———
U. S. Route ——— State Route ———

CONTOUR INTERVAL 50 FEET
DATUM IS MEAN SEA LEVEL
FOR SALE BY U. S. GEOLOGICAL SURVEY, DENVER 25, COLORADO OR WASHINGTON 25, D. C.
A FOLDER DESCRIBING TOPOGRAPHIC MAPS AND SYMBOLS IS AVAILABLE ON REQUEST

Polyconic projection. 1927 North American datum
10,000-foot grids based on Colorado (Central) and
Colorado (North) rectangular coordinate systems
Land lines pertaining to part of T. 6 S., R. 76 W.,
are omitted because land plats and topography
cannot be reconciled

MONTEZUMA, COLO.
N 3930-W 10545/15

1933

