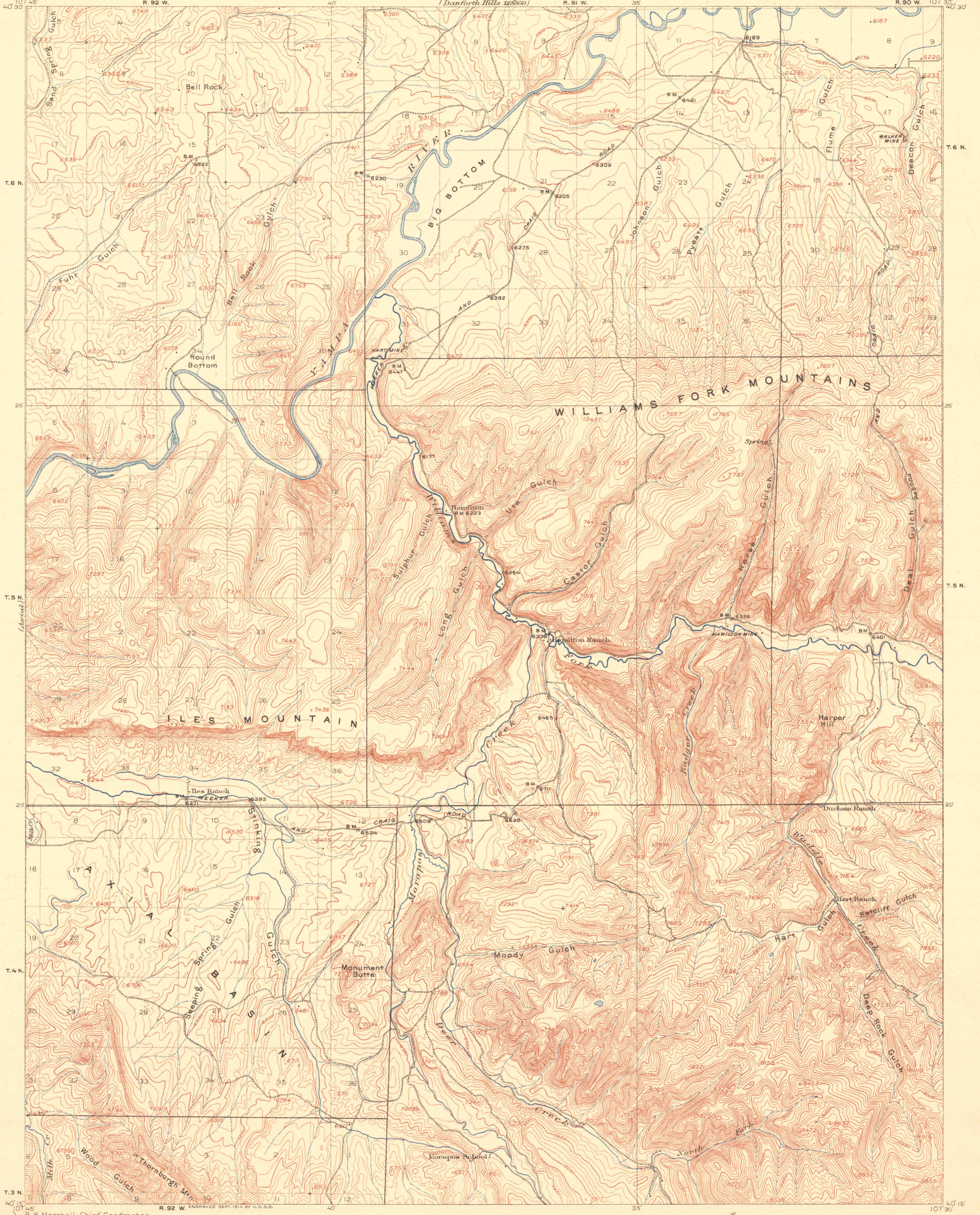
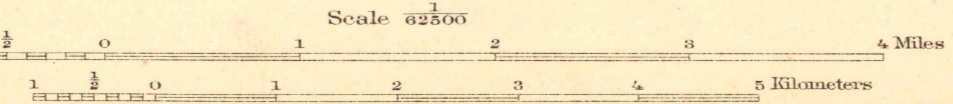
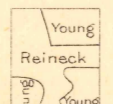


TOPOGRAPHY  
(Danforth Hills 1880s)

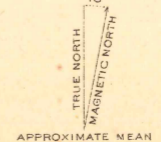


R. B. Marshall, Chief Geographer.  
Sledge Tatum, Geographer in charge.  
Topography by Gilbert Young and R. H. Reineck.  
Control by C. F. Urquhart, C. H. Semper, and Geo. W. Lucas.  
Surveyed in 1912.



Contour interval 50 feet.  
Datum is mean sea level.

Edition of Jan. 1915.



MONUMENT BUTTE