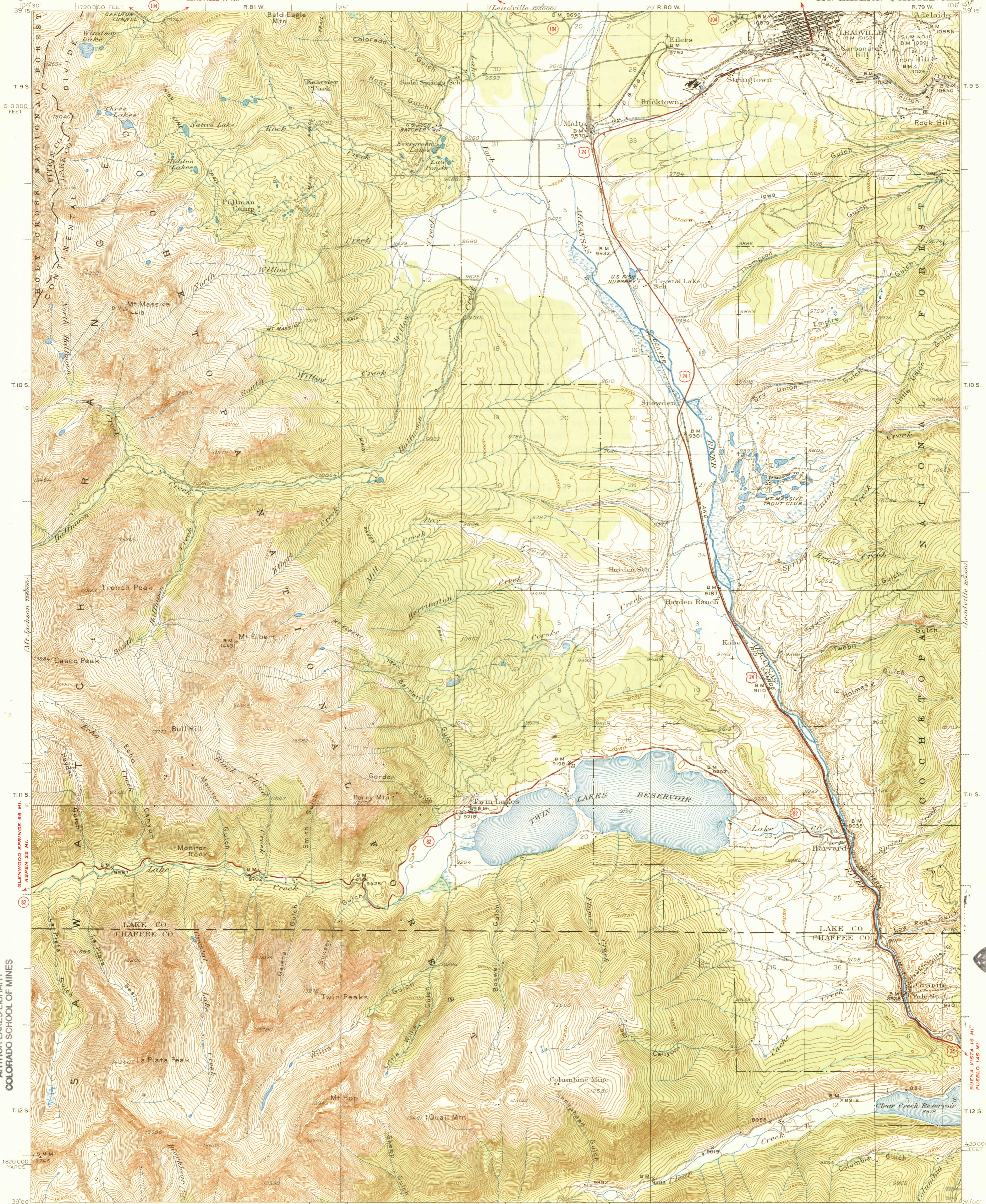


GRAND JUNCTION 162 MI.
GLENWOOD SPRINGS 61 MI.
UNITED STATES
DEPARTMENT OF THE INTERIOR
GEOLOGICAL SURVEY

GLENWOOD SPRINGS 66 MI.
BASALT 45 MI.

GRAND JUNCTION 189 MI.
GLENWOOD SPRINGS 96 MI.
JUNC. U.S. ROUTE NO. 6 2 MI. MT. ELBERT QUADRANGLE



Topography by R.R. Monbeck, Max J. Gleissner, M.C. McClellan,
D.F.C. Moor, W.A. McLaughlin, and H. Parker
Surveyed in 1927 and 1935

Scale 82800



Contour interval 50 feet
Datum is mean sea level

ROADS IMPERVIOUSLY SURFACED
ROADS OTHERWISE SURFACED
215 UNITED STATES ROUTE NUMBER
212 STATE ROUTE NUMBER

Polyconic projection, 1927 North American datum
5000 yard grid based on U.S. zone system
10000 foot grid based on Colorado (Central)
rectangular coordinate system
Land lines pertaining to parts of T.9S., R.80W.,
T.10S., R.79W., Tps. 11 and 12 S., Rs. 79, 80 and
81 W. are omitted because land plats and
topography cannot be reconciled.

DEPT. OF GEOLOG. COLO. SCHOOL MINES
Working Collection



JAN 19 1993

MAP ROOM
ARTHUR LAKES LIBRARY
COLORADO SCHOOL OF MINES

JUN 04 1987

MAP ROOM
ARTHUR LAKES LIBRARY

3700
32
34
MAP ROOM

CO

MT. ELBERT