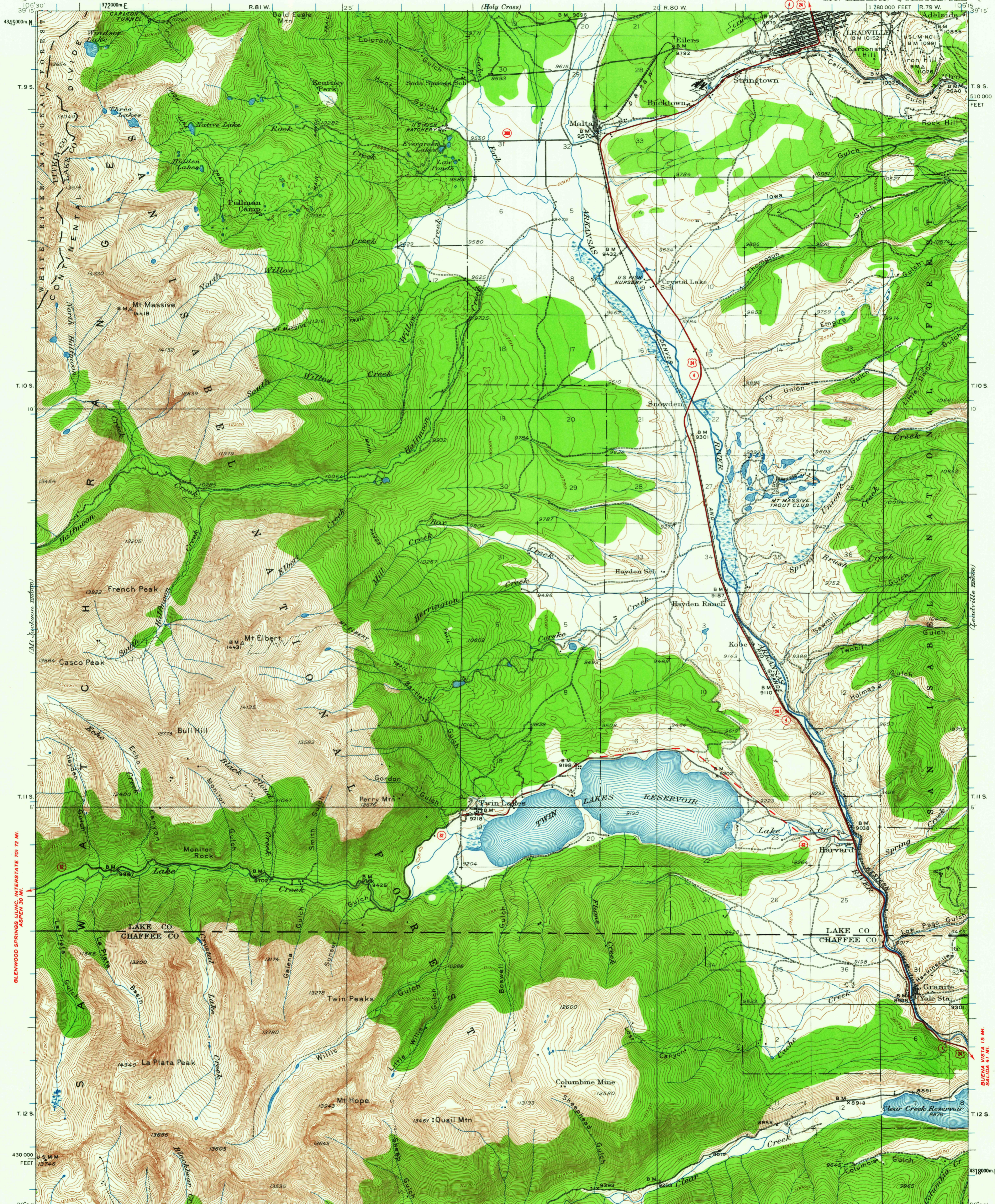


UNITED STATES
DEPARTMENT OF THE INTERIOR
GEOLOGICAL SURVEY

33 MI. TO INTERSTATE 70
REDCLIFF 22 MI.

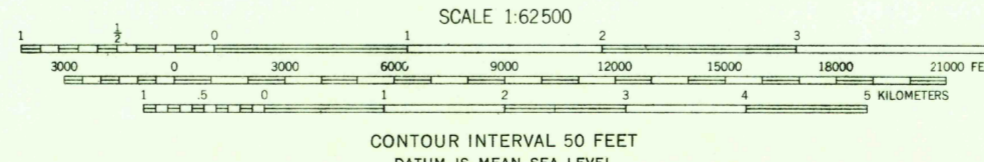
COLORADO
MT. ELBERT, QUADRANGLE



Topography by R.R. Monbeck, Max J. Gleissner, M.C. McClellan, D.F.C. Moor, W.A. McLaughlin and H. Parker. Surveyed in 1927 and 1935.

ROAD CLASSIFICATION

Heavy-duty ——— Light-duty ———
Medium-duty ——— Unimproved dirt ———
U.S. Route State Route



Polyconic projection. 1927 North American datum 10 000-foot grid based on Colorado (Central) rectangular coordinate system 1000-meter Universal Transverse Mercator grid ticks, zone 13, shown in blue. Land lines pertaining to parts of 1 9 S., R. 80 W., T. 10 S., R. 79 W., Tps. 11 and 12 S., Rs. 79, 80, and 81 W., are omitted because land plats and topography cannot be reconciled.

FOR SALE BY U. S. GEOLOGICAL SURVEY, DENVER 25, COLORADO OR WASHINGTON 25, D. C.
A FOLDER DESCRIBING TOPOGRAPHIC MAPS AND SYMBOLS IS AVAILABLE ON REQUEST

USGS
Historical File
Topographic Division

MT. ELBERT, COLO.
N3900—W10615/15
1935

6180