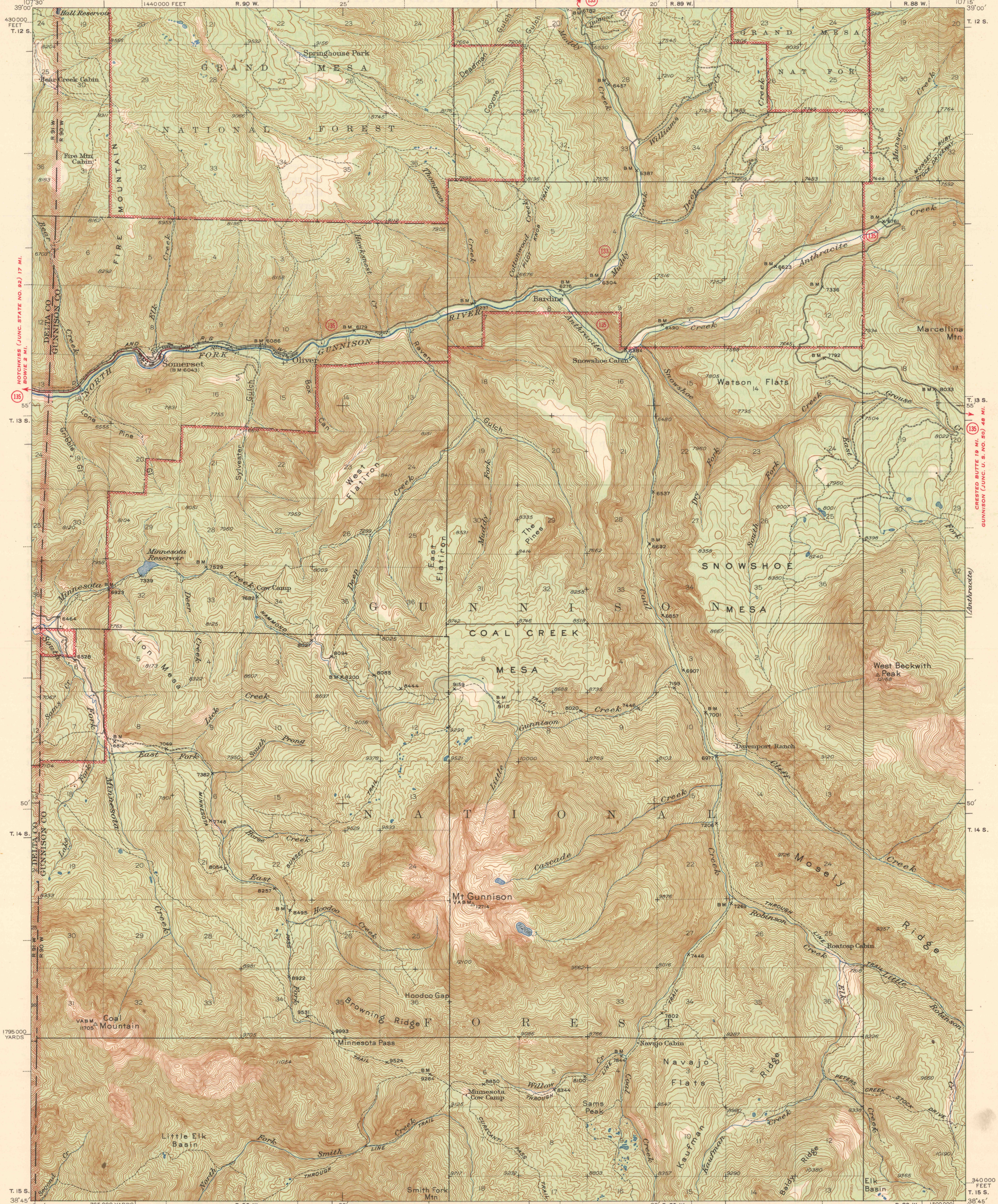
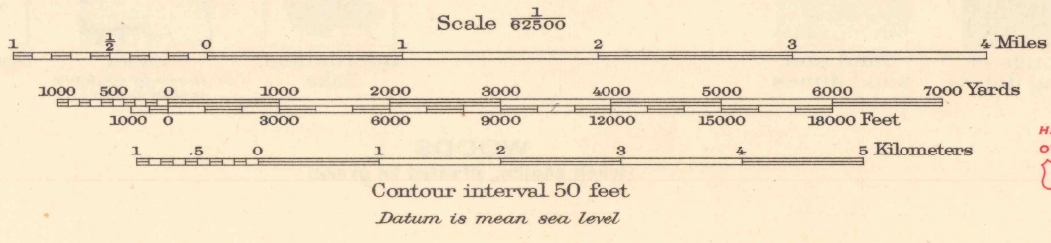
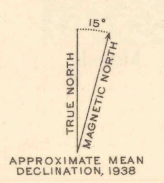
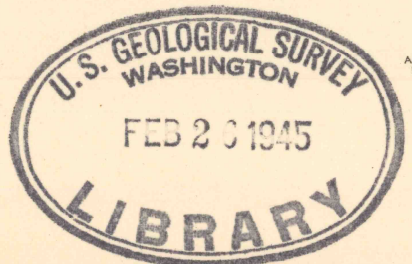


JUNC. STATE NO. 82 36 MI.
MCCLURES PASS 14 MI.



Topography by T.T. Ranney, S.G. Lunde,
M.C. McClellan, and C.E. Walker
Surveyed in 1936-1938



ROUTES USUALLY TRAVELED
HARD IMPERVIOUS SURFACES
OTHER SURFACE IMPROVEMENTS
U. S. ROUTE 1944 STATE ROUTE

Polyconic projection. 1927 North American datum
5000 yard grid based on U.S. zone system, E
10000 foot grid based on Colorado (Central)
rectangular coordinate system

MT. GUNNISON COLO.
Edition of 1945
N3845-W10715/15