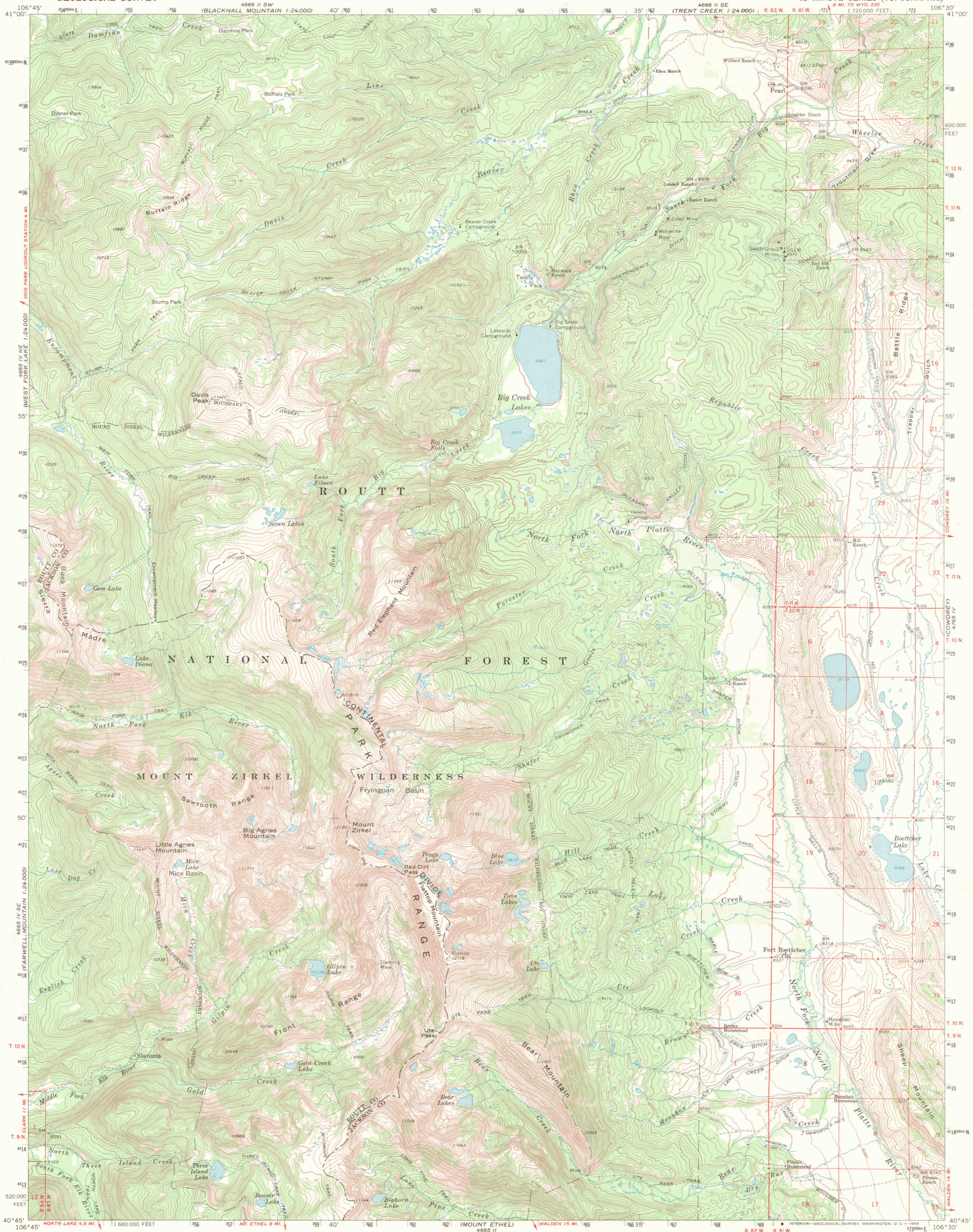
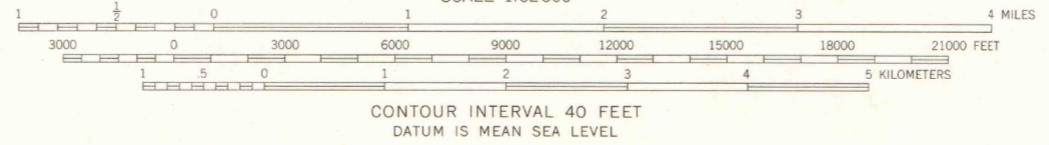
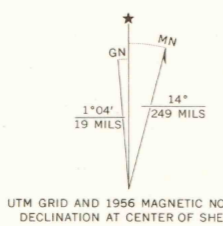


4665 IV SE
DUDLEY CREEK
1:24,000

4766 III SW
TETTER POINT
1:24,000



Mapped, edited, and published by the Geological Survey as part of the Department of the Interior program for the development of the Missouri River Basin Control by USGS and USC&GS. Compiled in 1968 from 1:24,000-scale maps dated 1955-1956. Polyconic projection. 1927 North American datum. 10,000-foot grid based on Colorado coordinate system, north zone. 1000-meter Universal Transverse Mercator grid ticks, zone 13, shown in blue. Certain land lines are omitted because of insufficient data.



ROAD CLASSIFICATION
Light-duty ——— Unimproved dirt ———

This area also covered by 7.5 minute 1:24,000-scale maps: Pearl 1955, Davis Peak 1955, Mount Zirkel 1955, and Boettcher Lake 1956.
PEARL, COLO.
N4045—W10630/15

LIBRARY USE ONLY

THIS MAP COMPLIES WITH NATIONAL MAP ACCURACY STANDARDS
FOR SALE BY U.S. GEOLOGICAL SURVEY, DENVER, COLORADO 80225, OR WASHINGTON, D. C. 20242
A FOLDER DESCRIBING TOPOGRAPHIC MAPS AND SYMBOLS IS AVAILABLE ON REQUEST