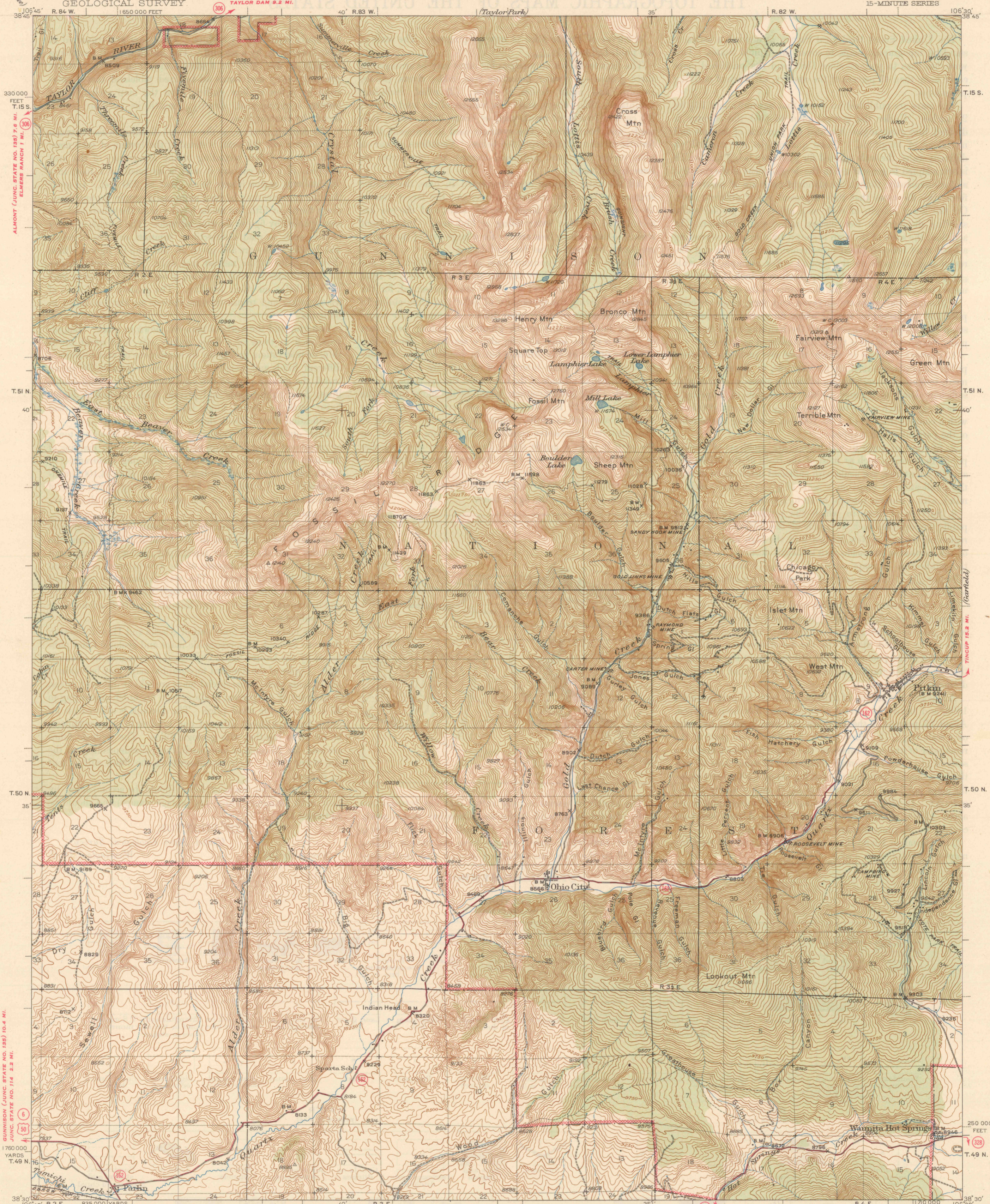


UNITED STATES
DEPARTMENT OF THE INTERIOR
GEOLOGICAL SURVEY



330 000
FEET
T. 15 S.

T. 51 N.

T. 50 N.

1760 000
YARDS
T. 49 N.

T. 15 S.

T. 51 N.

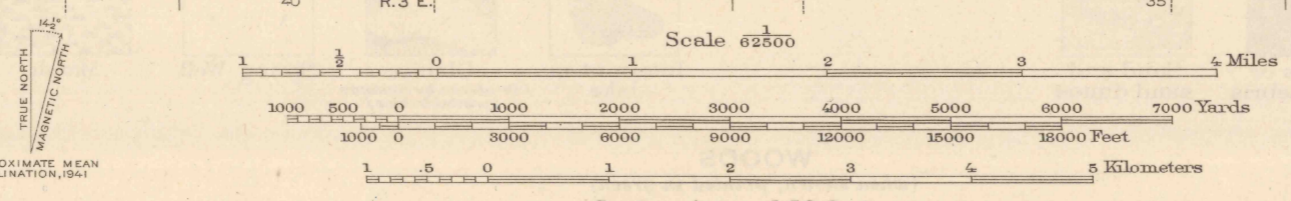
T. 50 N.

250 000
FEET
T. 49 N.

GUNNISON (JUNC. STATE NO. 138) 10.4 MI.
JUNC. STATE NO. 114 2.2 MI.

T. 49 N. 15.2 MI. (partially)

Topography by Max J. Gleissner, T. T. Ranney,
M. C. McClellan, C. E. Walker, Harry Parker,
L. M. Stevenson, J. M. Stricklin, R. E. Mann,
D. H. Daugherty, and N. B. Wright
Surveyed in 1938, 1939, and 1941



Contour interval 50 feet
Datum is mean sea level

To join Taylor Park map use
dotted projection corners
ROUTES USUALLY TRAVELED
HARD IMPERVIOUS SURFACES
OTHER SURFACE IMPROVEMENTS
U. S. ROUTE 1944 STATE ROUTE

Polyconic projection, 1927 North American datum
5000 yard grid based on U.S. zone system, E
10000 foot grid based on Colorado (Central)
rectangular coordinate system
Certain land lines are omitted
because of insufficient data
All recovered corners are shown
USGS PITKIN, COLO.
Historical File
Topographic Division
1945
10630/15