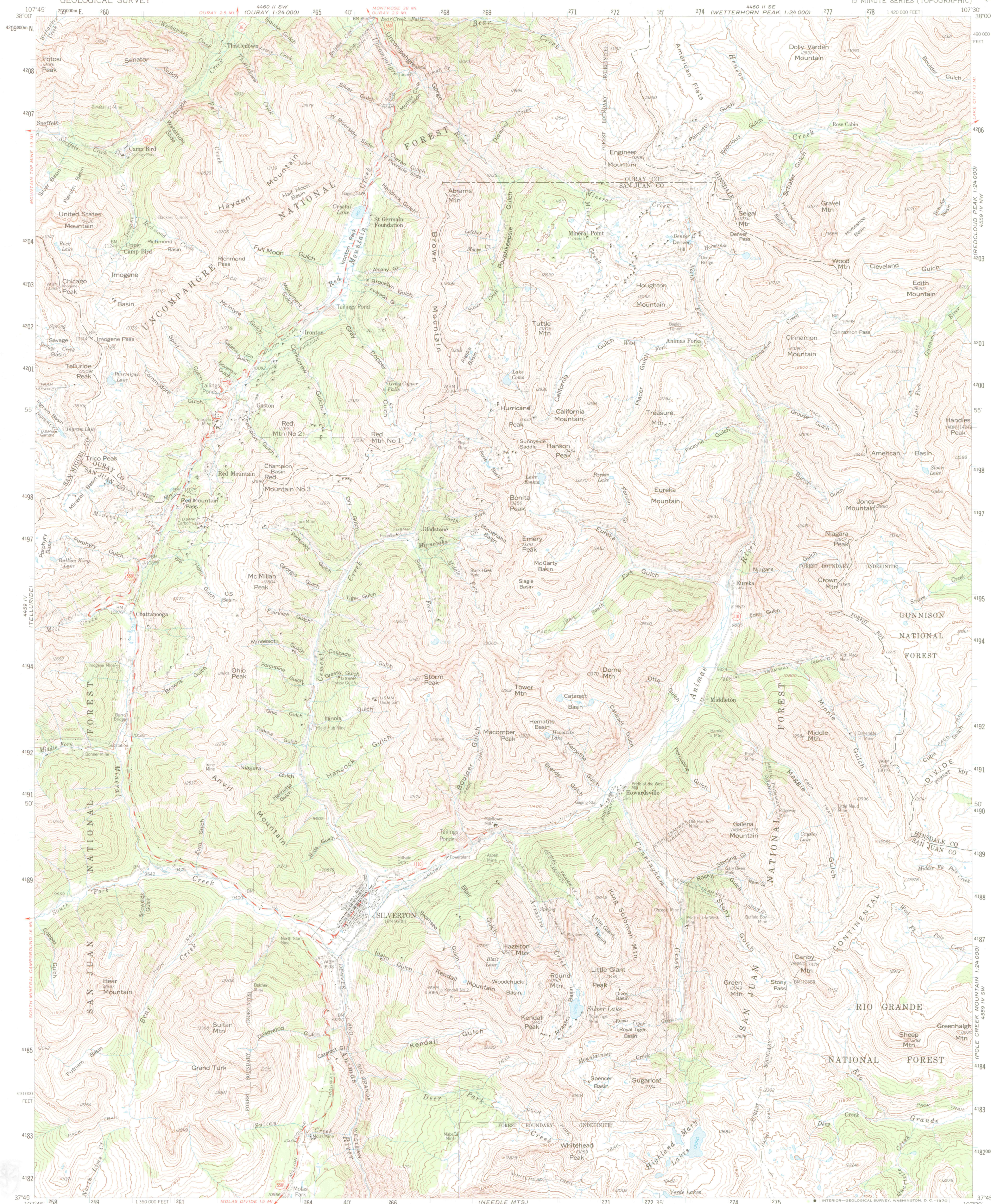


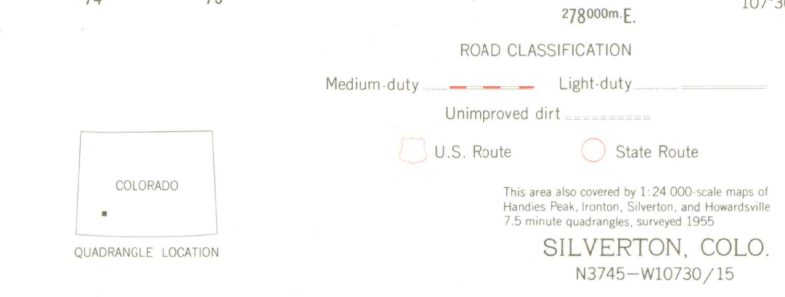
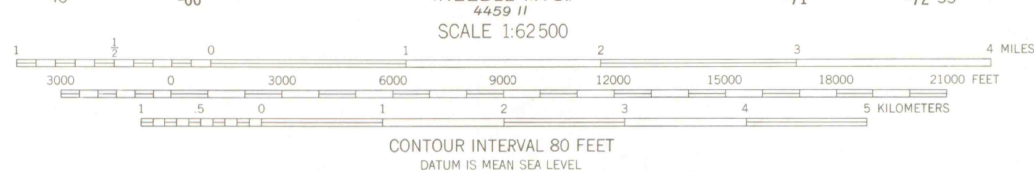
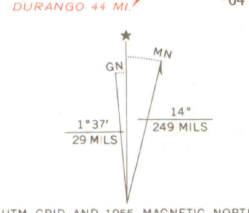
UNITED STATES
DEPARTMENT OF THE INTERIOR
GEOLOGICAL SURVEY

SILVERTON QUADRANGLE
COLORADO
15 MINUTE SERIES (TOPOGRAPHIC)

4459 II SW
UNCOMPAHGE PEAK
1:24 000



Maped, edited, and published by the Geological Survey
Control by USGS and USC&GS
Compiled in 1959 from 1:24 000-scale maps of Handies Peak,
Ironton, Silverton, and Howardsville 7.5 minute quadrangles,
surveyed 1955
Topography from aerial photographs by photogrammetric methods
Aerial photographs taken 1951
Polyconic projection, 1927 North American datum
10,000-foot grid based on Colorado coordinate system,
south zone
1000-meter Universal Transverse Mercator grid ticks,
zone 13, shown in blue
All land lines omitted because of alleged fraud or defects in the surveys



AMS 4459 I-SERIES V777

OFFICE COPY
LIBRARY ONLY
G 3700
662
64
MAP ROOM
LIGHT