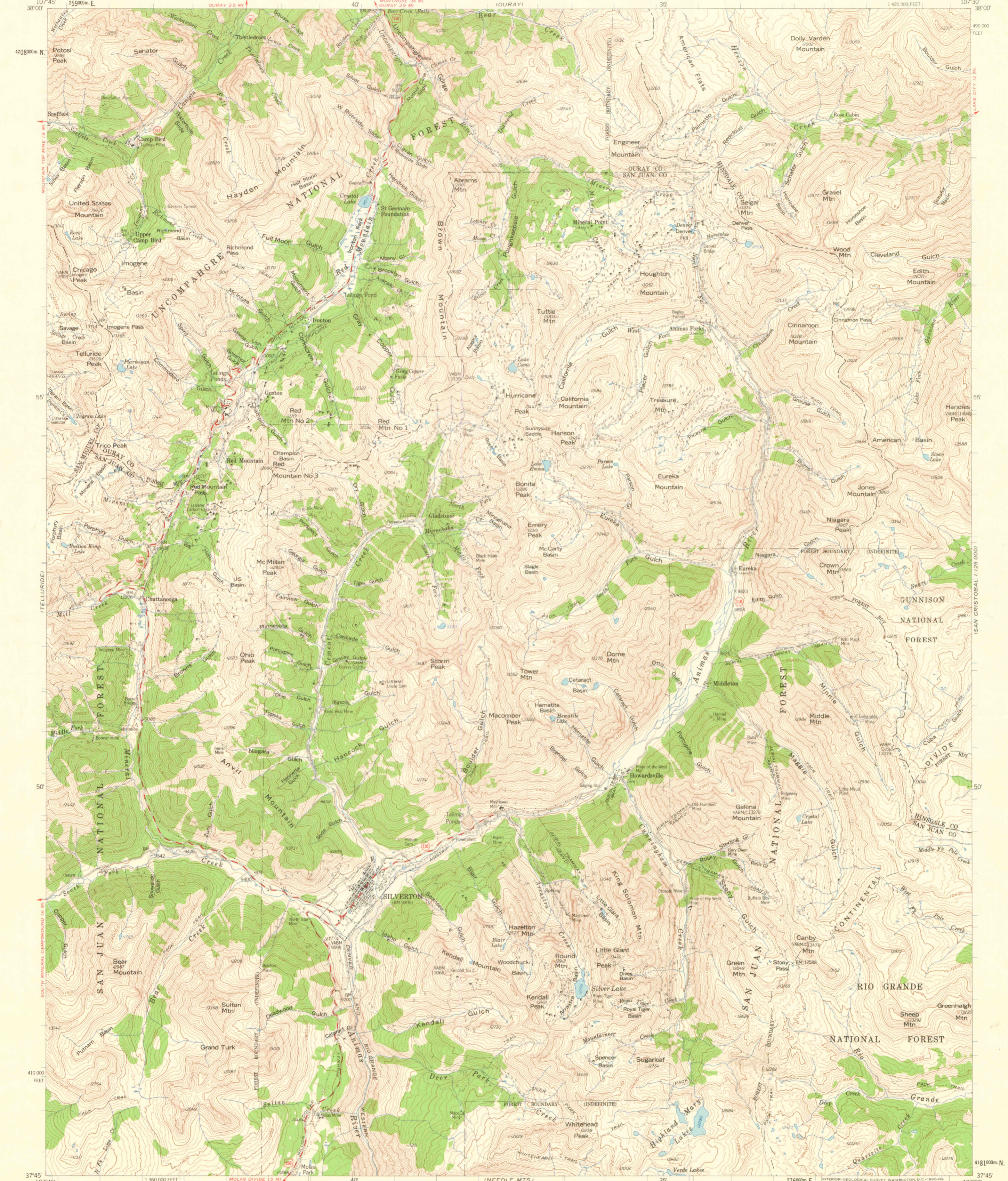
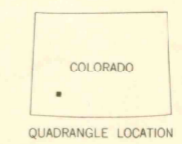
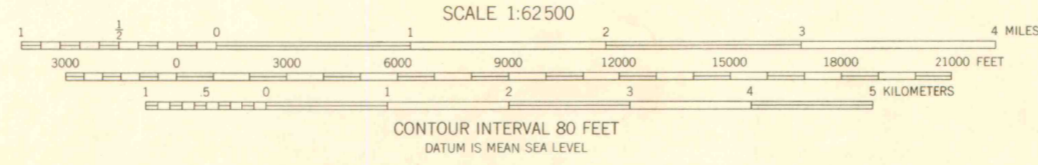
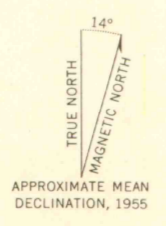


UNITED STATES
DEPARTMENT OF THE INTERIOR
GEOLOGICAL SURVEY

SILVERTON QUADRANGLE
COLORADO
15 MINUTE SERIES (TOPOGRAPHIC)



Mapped, edited, and published by the Geological Survey
Control by USGS and USC&GS
Compiled in 1959 from 1:24,000-scale maps of Handies Peak,
Ironton, Silverton, and Howardsville 7.5 minute quadrangles,
surveyed 1955
Topography from aerial photographs by photogrammetric methods
Aerial photographs taken 1951
Polyconic projection, 1927 North American datum
10,000-foot grid based on Colorado coordinate system,
south zone
1000-meter Universal Transverse Mercator grid ticks,
zone 13, shown in blue
All land lines omitted because of alleged fraud or defects in the surveys



THIS MAP COMPLIES WITH NATIONAL MAP ACCURACY STANDARDS
FOR SALE BY U.S. GEOLOGICAL SURVEY, DENVER 25, COLORADO OR WASHINGTON 25, D. C.
A FOLDER DESCRIBING TOPOGRAPHIC MAPS AND SYMBOLS IS AVAILABLE ON REQUEST

This area also covered by 1:24,000-scale maps of
Handies Peak, Ironton, Silverton, and Howardsville
7.5 minute quadrangles, surveyed 1955
SILVERTON, COLO.
N3745-W10730/15

1955 LIBRARY USE ONLY

OFFICE COPY