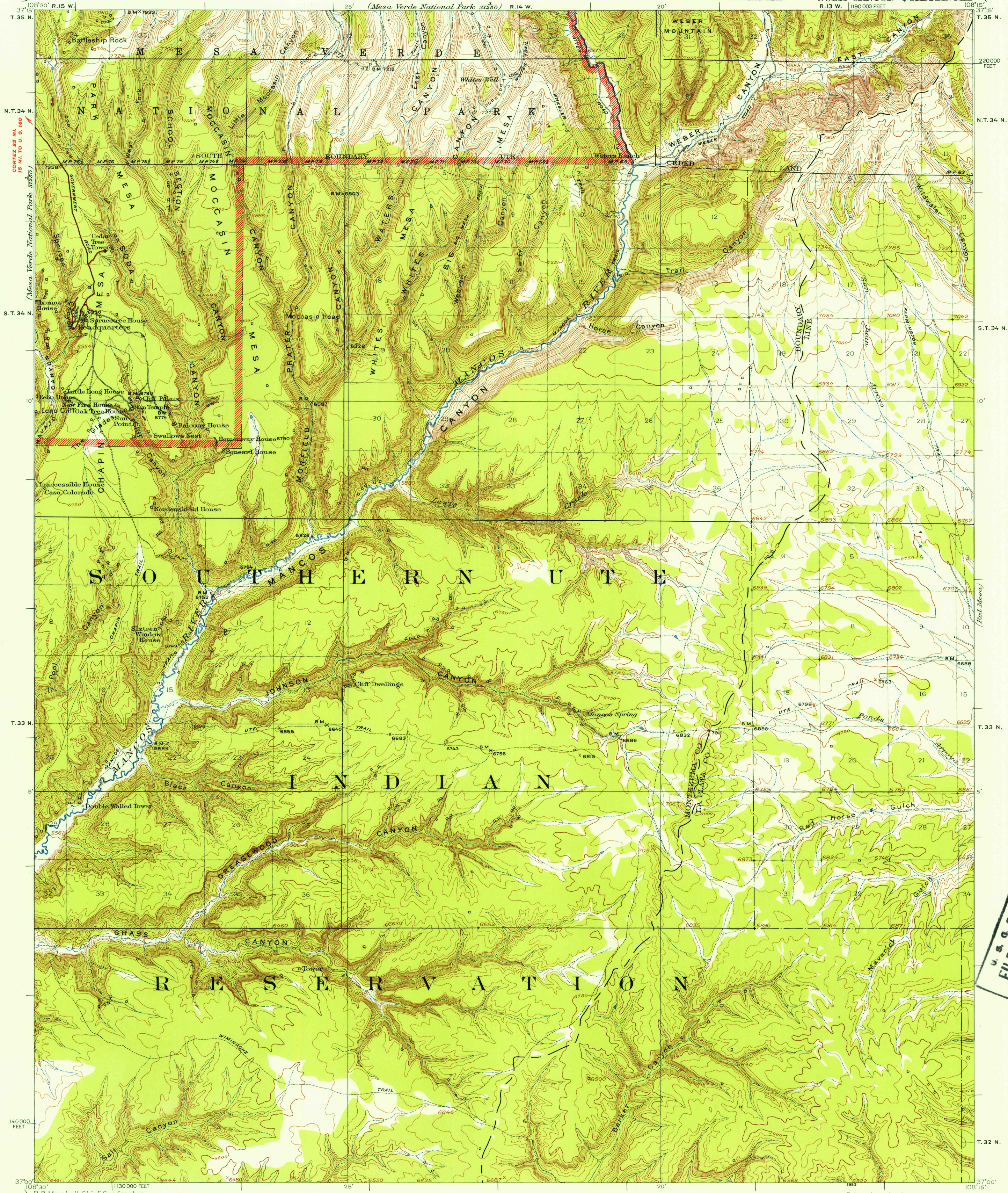


U.S.G.S.
FILE COPY
Inspection and Editing.

UNITED STATES
DEPARTMENT OF THE INTERIOR
GEOLOGICAL SURVEY

COLORADO
SODA CANYON QUADRANGLE
R.13 W. 1190000 FEET



R.B. Marshall, Chief Geographer.
Sledge Tatum, Geographer in charge.
Topography by R.W. Berry and C.A. Ecklund.
Control by C.F. Unruh, C.P. McKinley,
R.M. Copeland and M.R. McDaniel.
Surveyed in 1911-1912.

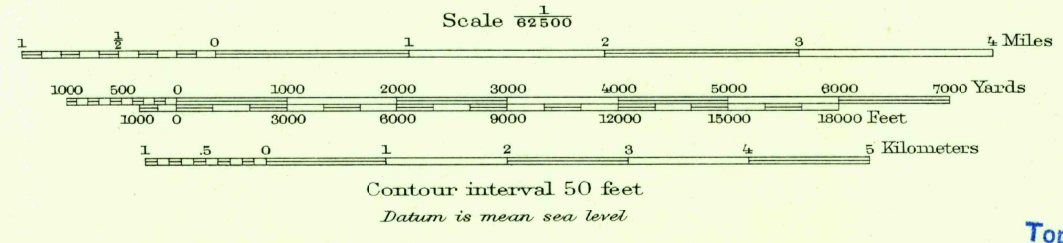
Additional trails, springs and reservoirs
added 1933 by Indian Office.

ROAD CLASSIFICATION

Heavy-duty ——— 4 LANE 6 LANE Light-duty ———
Medium-duty ——— 4 LANE 6 LANE Unimproved dirt ———

U.S. Route State Route

APPROXIMATE MEAN
DECLINATION, 1912



USGS
Historical File
Topographic Division

Polyconic projection.
10 000 foot grid based on Colorado (South)
rectangular coordinate system

Map of the Mesa Verde National Park,
scale 1:31,250, contour interval 25 feet,
from a later and more detailed survey
of the northwest part of this quadrangle,
is available.

SODA CANYON, COLO.
N3700-W10815/15
1912

FOR SALE BY U.S. GEOLOGICAL SURVEY, FEDERAL CENTER, DENVER, COLORADO OR WASHINGTON 25, D.C.
A FOLDER DESCRIBING TOPOGRAPHIC MAPS AND SYMBOLS IS AVAILABLE ON REQUEST

U.S.G.S.
FILE COPY
Inspection and Editing.

MAY 1 1953

6515