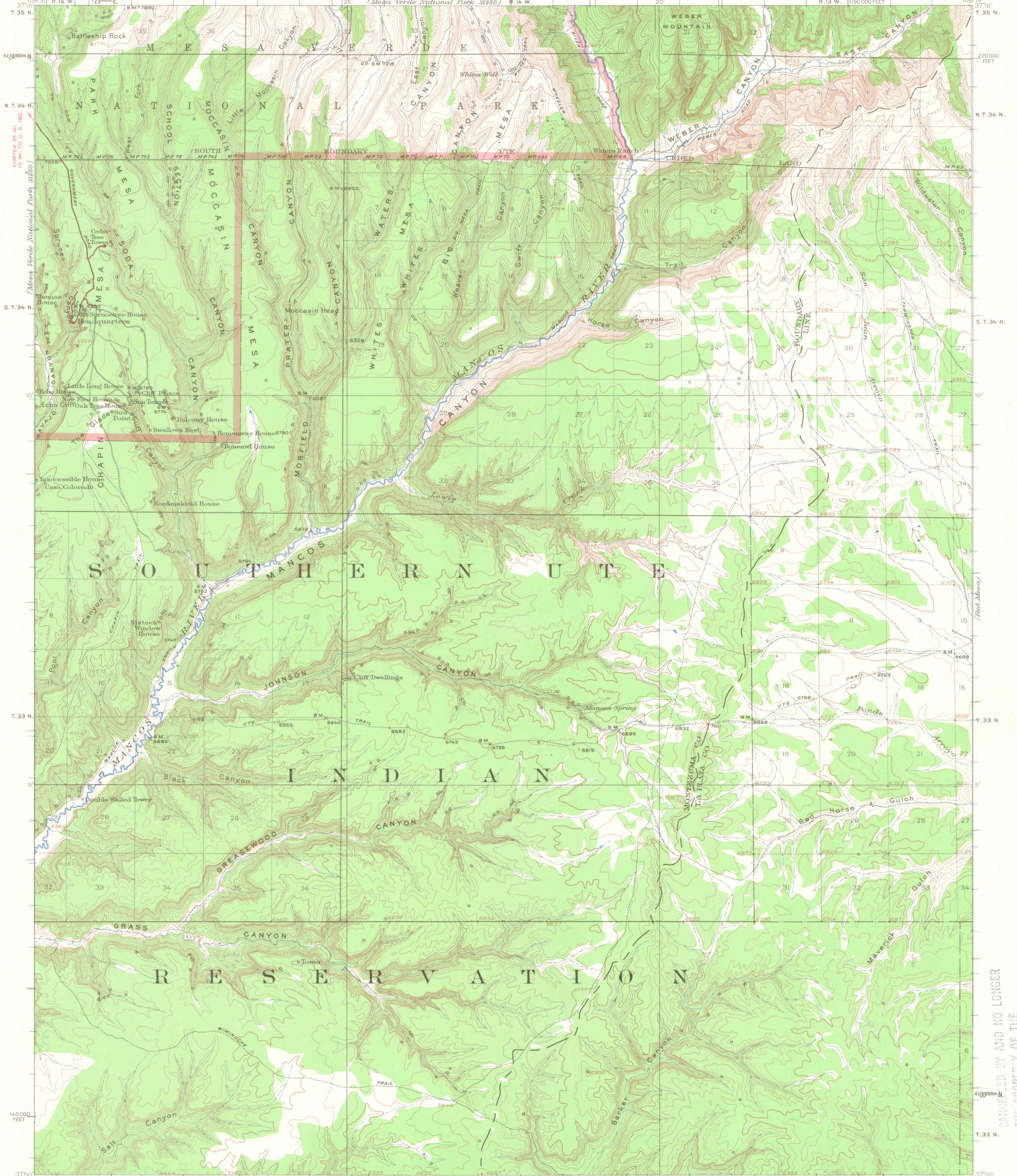


UNITED STATES  
DEPARTMENT OF THE INTERIOR  
GEOLOGICAL SURVEY

COLORADO  
SODA CANYON QUADRANGLE

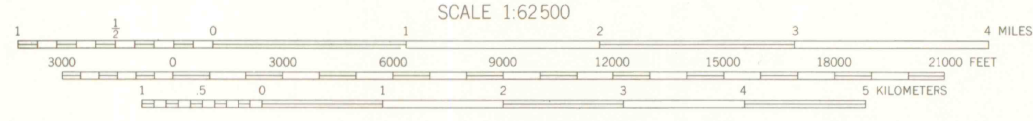


R.E. Marshall, Chief Geographer.  
Sledge Tatum, Geographer in charge.  
Topography by R.W. Berry and C.A. Ecklund.  
Control by C.F. Urquhart, C.P. McKinley,  
R.M. Copeland and M.R. McDaniel.  
Surveyed in 1911-1912.

Additional trails, springs, and reservoirs  
added 1933 by Indian Office

**ROAD CLASSIFICATION**  
Heavy-duty ——— Light-duty ———  
Unimproved dirt ———

APPROXIMATE MEAN  
DECLINATION, 1912  
TRUE NORTH  
MAGNETIC NORTH



CONTOUR INTERVAL 50 FEET  
DATUM IS MEAN SEA LEVEL

Polyconic projection. 1927 North American datum  
10,000-foot grid based on Colorado (South)  
rectangular coordinate system  
1000-meter Universal Transverse Mercator grid ticks,  
zone 12, shown in blue

Map of the Mesa Verde National Park,  
scale 1:31,250, contour interval 25 feet,  
from a later and more detailed survey  
of the northwest part of this quadrangle,  
is available

SODA CANYON, COLO.  
N 3700—W 10815/15

1912

FOR SALE BY U. S. GEOLOGICAL SURVEY, DENVER 25, COLORADO OR WASHINGTON 25, D. C.  
A FOLDER DESCRIBING TOPOGRAPHIC MAPS AND SYMBOLS IS AVAILABLE ON REQUEST

NOV 07 2006

OFFICE COPY  
LIBRARY USE ONLY

CANCELLED BY AND NO LONGER  
THE PROPERTY OF THE  
UNIVERSITY OF COLORADO LIBRARY

G 3700  
s62  
.G4  
MAP ROOM