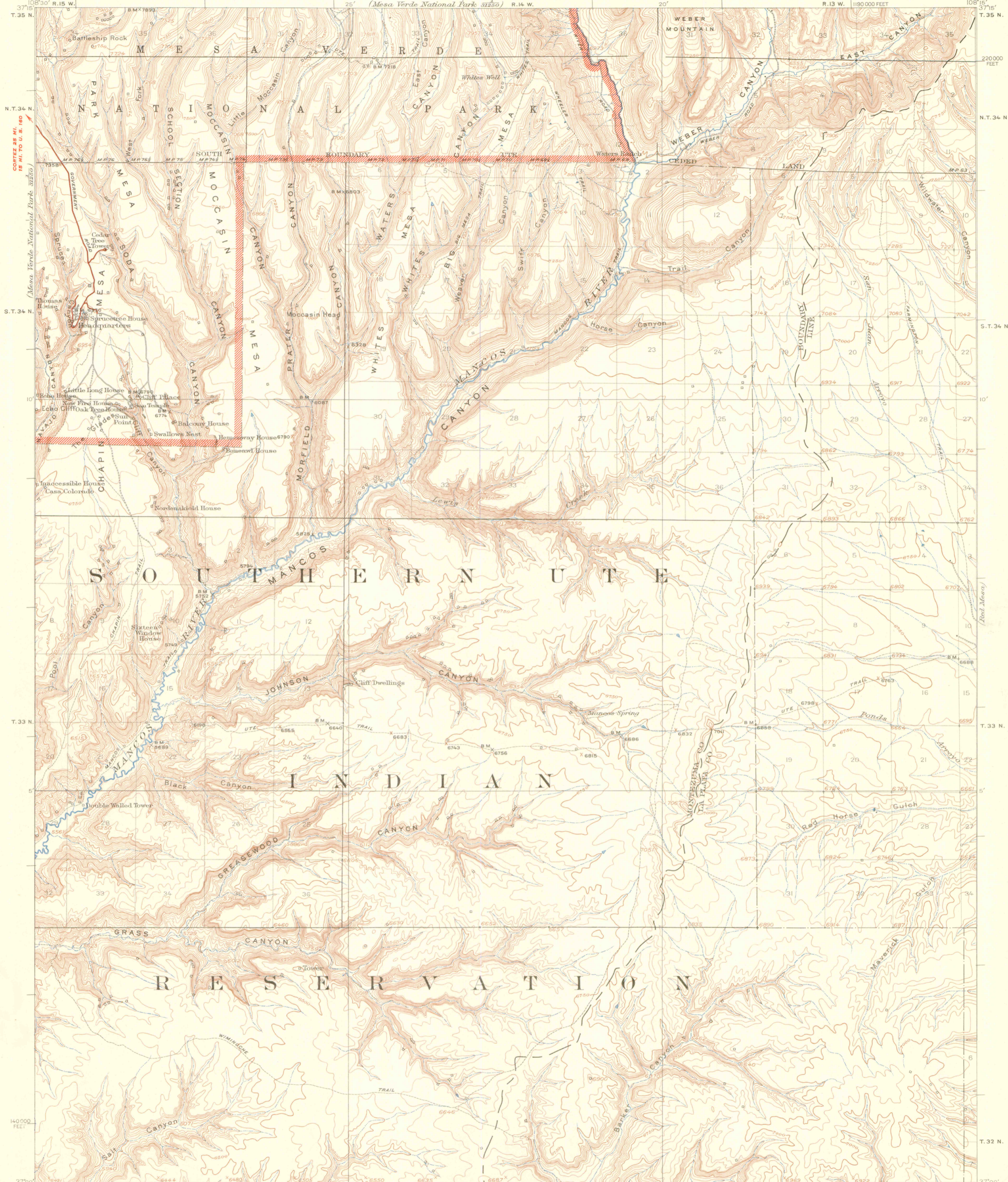


Mesa Verde National Park  
(National Park)

UNITED STATES  
DEPARTMENT OF THE INTERIOR  
GEOLOGICAL SURVEY

COLORADO  
SODA CANYON QUADRANGLE  
R. 13 W. T. 35 N.  
190000 FEET

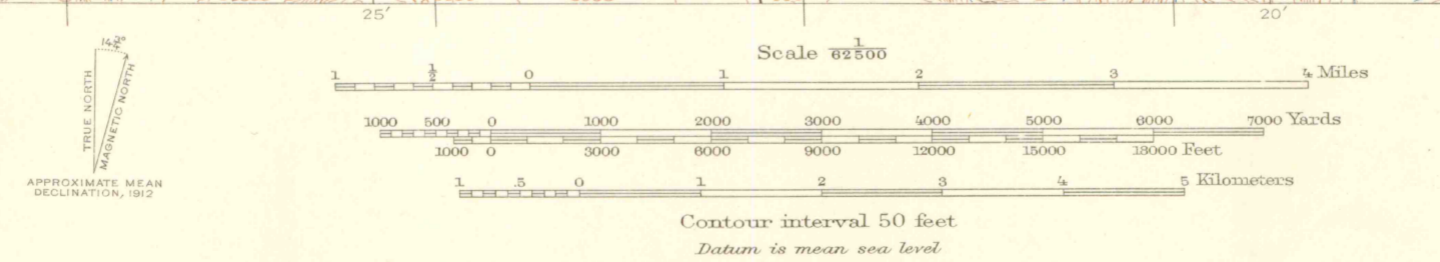


1:31,250  
10000 FEET  
R. B. Marshall, Chief Geographer,  
Sledge Tatum, Geographer in charge,  
Topography by R. W. Berry and G. A. Ecklund,  
Control by C. F. Urquhart, C. P. McKinley,  
R. M. Copeland and M. R. McDaniell.  
Surveyed in 1911-1912.  
Additional trails, springs, and reservoirs  
added 1933 by Indian Office.

**ROAD CLASSIFICATION**

Heavy-duty ———+LANE LANE Light-duty ———  
Medium-duty ———+LANE LANE Unimproved dirt ———

U. S. Route      State Route



Map of the Mesa Verde National Park,  
scale 1:31,250, contour interval 25 feet,  
from a later and more detailed survey  
of the northwest part of this quadrangle,  
is available.

SODA CANYON, COLO.  
N3700-W10815/15  
1912  
LIBRARY USE ONLY