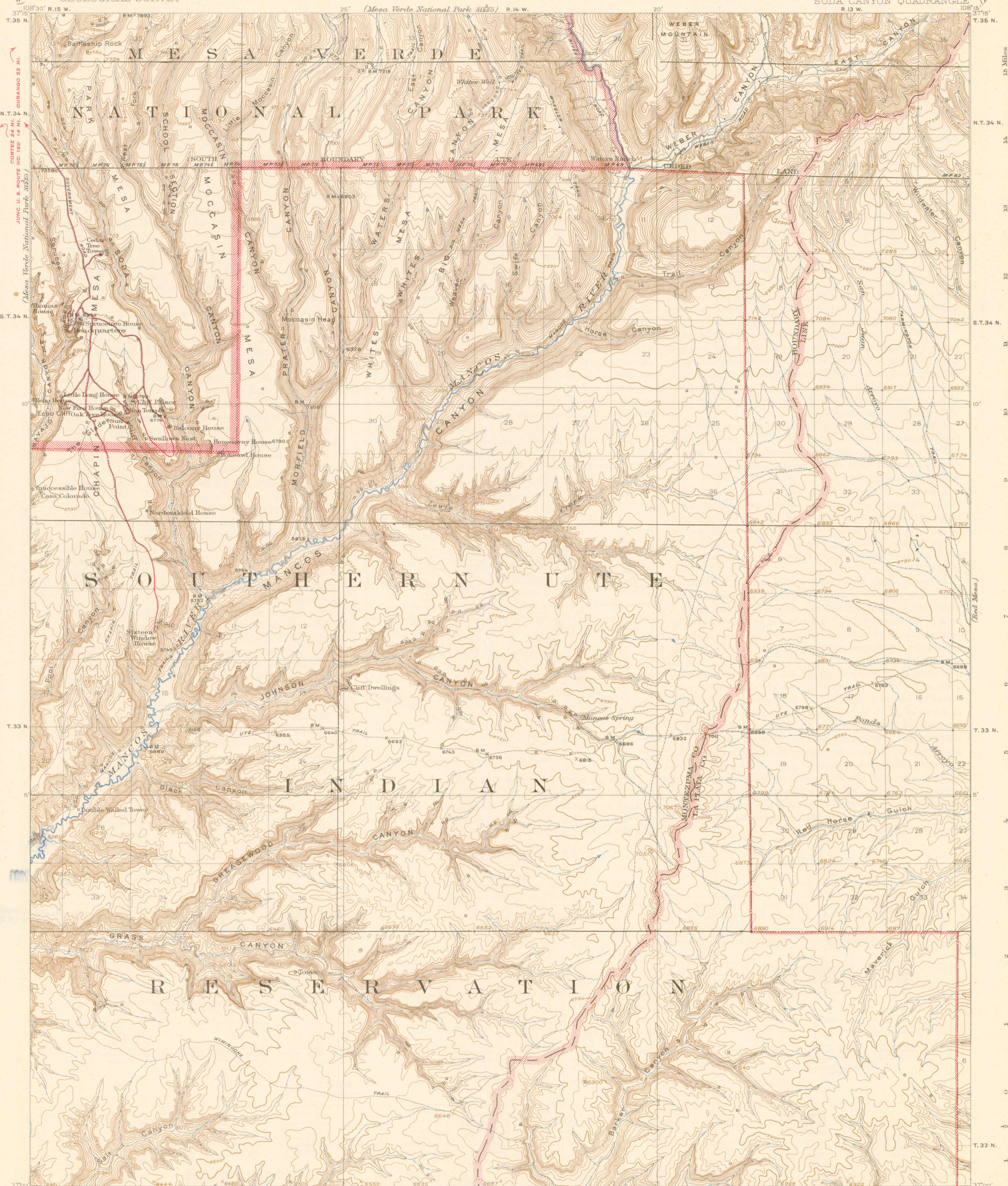


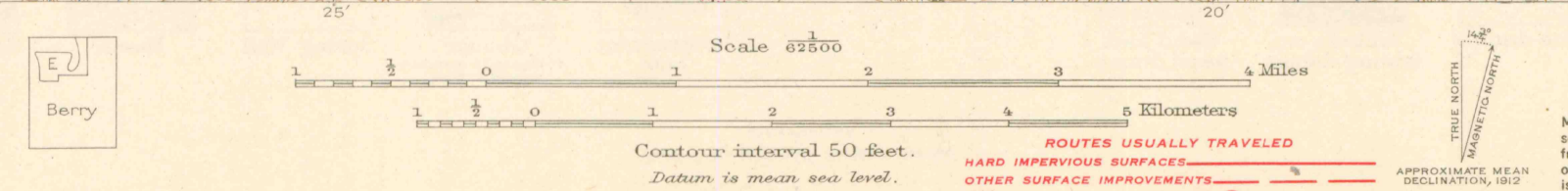
(Mesa Verde National Park 3250) R. 14 W.



37°00' 108°30' R. 15 W.
T. 35 N.
N.T. 34 N.
S.T. 34 N.
T. 33 N.
T. 32 N.
37°00' 108°15'

R.B. Marshall, Chief Geographer.
Sledge Tatum, Geographer in charge.
Topography by R.W. Berry and C.A. Ecklund.
Control by C.F. Urquhart, C.P. McKinley,
R.M. Copeland and M.R. McDaniell.
Surveyed in 1911-1912.

Additional trails, springs, and reservoirs
added 1933 by Indian Office



Scale 62500
0 1 2 3 4 Miles
0 1 2 3 4 5 6 Kilometers
Contour interval 50 feet.
Datum is mean sea level.

Edition of May 1915, reprinted 1943
Polyconic projection.

Map of the Mesa Verde National Park,
scale 1:31,250, contour interval 25 feet,
from a later and more detailed survey
of the northwest part of this quadrangle,
is available.

SODA CANYON, COLO.

N3700-W10815/15

OFFICE COPY
LITHOGRAPHED BY THE GEOLOGICAL SURVEY

g3700
\$62
64