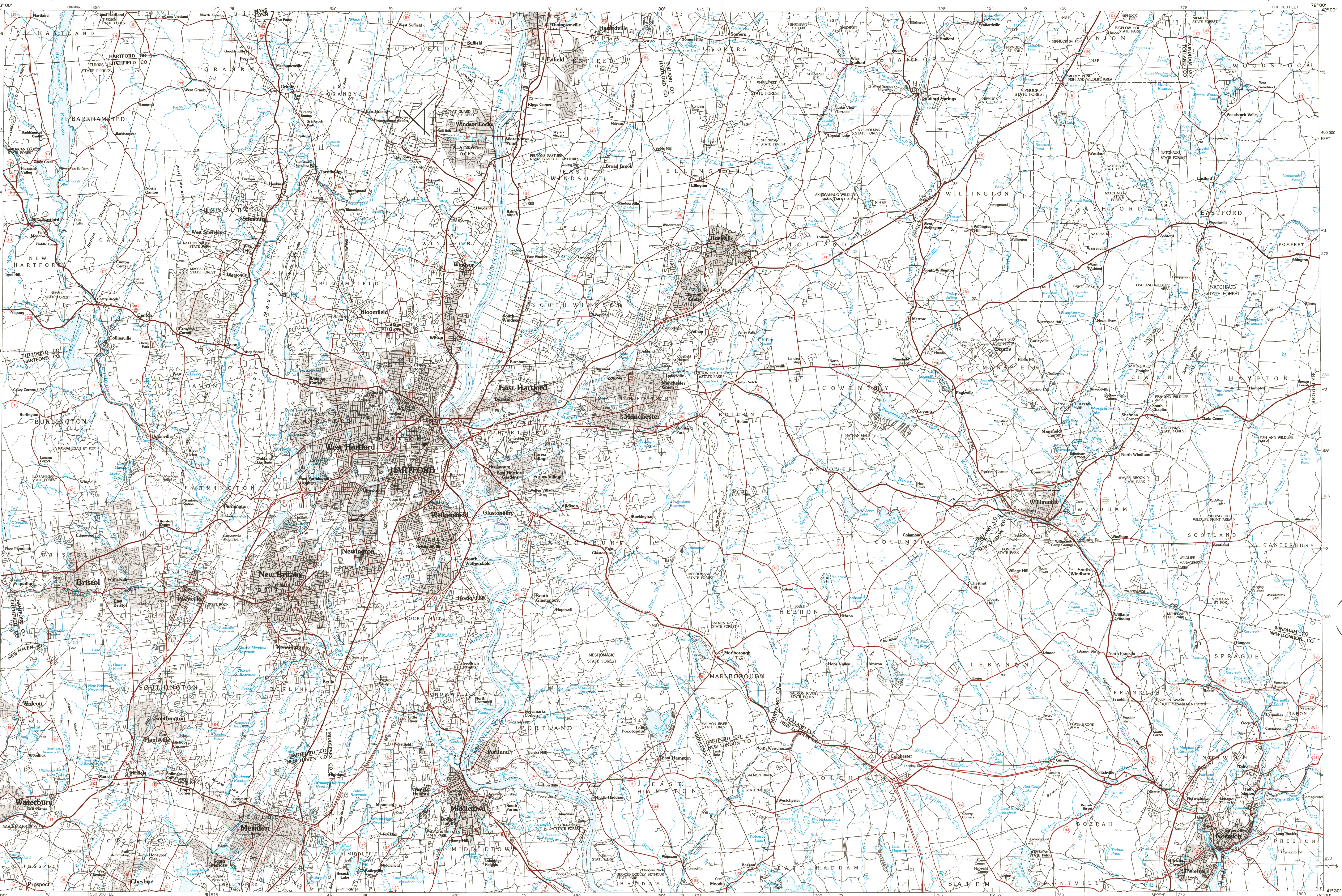


HARTFORD, CONNECTICUT-MASSACHUSETTS

30 X 60 MINUTE SERIES (PLANIMETRIC)

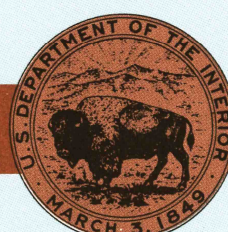


Hartford

CONNECTICUT-MASSACHUSETTS

1:100 000-scale
planimetric map30 X 60 MINUTE QUADRANGLE
SHOWING

- Elevations in meters
- Highways, roads and other manmade structures
- Water features
- Geographic names



GEOLOGICAL SURVEY

1986

Produced by the United States Geological Survey

Compiled from USGS 1:24 000-scale topographic maps dated 1953-1984. Planimetry revised from aerial photographs taken 1979 and other source data. Revised information not field checked. Map edited 1986.

Projection and 10 000-meter grid, zone 18, Universal Transverse Mercator

25 000-foot grid ticks based on Connecticut coordinate system 1922 North American Datum

To place on the predicted North American Datum 1983, move the projection lines 5 meters south and 38 meters west

There may be private inholdings within the boundaries of the National or State reservations shown on this map

NATIONAL GEODETIC VERTICAL DATUM OF 1929
ELEVATIONS SHOWN TO THE NEAREST METER

THIS MAP COMPLIES WITH NATIONAL MAP ACCURACY STANDARDS

CONVERSION TABLE		DECLINATION DIAGRAM		ADJOINING MAPS		
Meters	Feet			1	2	3
1	3.2808			1	2	3
2	6.5617			4	5	
3	9.8425					
4	13.1234					
5	16.4042					
6	19.6850					
7	22.9659					
8	26.2467					
9	29.5276					
10	32.8084					
To convert meters to feet multiply by 3.2808		UTM grid convergence (GN) and 1983 magnetic declination (MD) of center of map		1 Pinfield 2 Holyoke 3 Boston 4 Waterbury 5 Providence 6 Bridgeport 7 New Haven 8 Block Island		
To convert feet to meters multiply by 0.3048		Diagram is approximate				

FOR SALE BY U.S. GEOLOGICAL SURVEY
DENVER, COLORADO 80225, OR RESTON, VIRGINIA 22092

USGS NMD HISTORICAL MAP

DEC 05 1986

REC'D FILE COPY

Topographic Map Symbols

Primary highway, hard surface	
Secondary highway, hard surface	
Light duty road, principal street, hard or improved surface	
Other road or street; trail	
Route marker: Interstate U.S. State	
Railroad: standard gage; narrow gage	
Bridge: overpass; underpass	
Tunnel: road; railroad	
Built up area; locality; elevation	
Airport; landing field; landing strip	
National boundary	
State boundary	
County boundary	
National or State reservation boundary	
Land grant boundary	
U.S. public lands survey: range, township, section	
Range, township, section; unpatented	
Power transmission line; pipeline	
Dam; dam with lock	
Cemetery; building	
Windmill; water well; spring	
Mine shaft; adit or cave; mine, quarry; gravel pit	
Campground; picnic area; U.S. location monument	
Runes, cliff dwelling	
Distorted surface: strip mine, lava; sand	
Contours: index; intermediate; supplementary	
Bathymetric contours: index; intermediate	
Stream, lake; perennial; intermittent	
Reefs, large and small; lake, large and small	
Area to be submerged; marsh, swamp	
Land subject to controlled inundation; woodland	
Scrub; mangrove	
Orchard; vineyard	

A pamphlet describing topographic maps is available on request

HARTFORD, CONNECTICUT-MASSACHUSETTS

41072-E1-PL-100

1986