

HARTFORD, CONNECTICUT-MASSACHUSETTS

30 X 60 MINUTE SERIES (TOPOGRAPHIC)

Hartford  
CONNECTICUT-MASSACHUSETTS

1:100 000-scale metric  
topographic map



30 X 60 MINUTE QUADRANGLE  
SHOWING

- Contours and elevations in meters
- Highways, roads and other manmade structures
- Water features
- Woodland areas
- Geographic names



Produced by the United States Geological Survey  
Compiled from USGS 1:24 000-scale topographic maps dated 1953-1984. Planimetry revised from aerial photographs taken 1989 and other source data. Revised information not field checked. Map edited 1994  
North American Datum of 1927 (NAD 27). Projection and 10 000-meter grid: Universal Transverse Mercator, zone 18  
25 000-foot ticks: Connecticut coordinate system.  
The values of the shift between NAD 27 and North American Datum of 1983 (NAD 83) for 7.5-minute intersections are obtainable from National Geodetic Survey NADCON software  
There may be private inholdings within the boundaries of the National or State reservations shown on this map

CONTOUR INTERVAL 10 METERS  
NATIONAL GEODETIC VERTICAL DATUM OF 1929  
ELEVATIONS SHOWN TO THE NEAREST METER

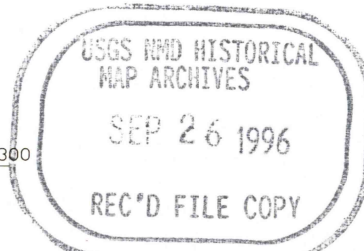
THIS MAP COMPLIES WITH NATIONAL MAP ACCURACY STANDARDS  
FOR SALE BY U.S. GEOLOGICAL SURVEY  
DENVER, COLORADO 80225, OR RESTON, VIRGINIA 22092

CONVERSION TABLE		DECLINATION DIAGRAM	ADOPTING MAPS			
Meters	Feet		1	2	3	
1	3.2808					
2	6.5617					
3	9.8425					
4	13.1234					
5	16.4042					
6	19.6850					
7	22.9659					
8	26.2467					
9	29.5276					
10	32.8084					
To convert meters to feet multiply by 3.2808						
To convert feet to meters multiply by 0.3048						
			1	2	3	
			4			5
			6	7	8	
			1	Pittsfield		
			2	Holyoke		
			3	Boston		
			4	Waterbury		
			5	Providence		
			6	Bridgeport		
			7	New Haven		
			8	Block Island		

ISBN 0-607-13449-6



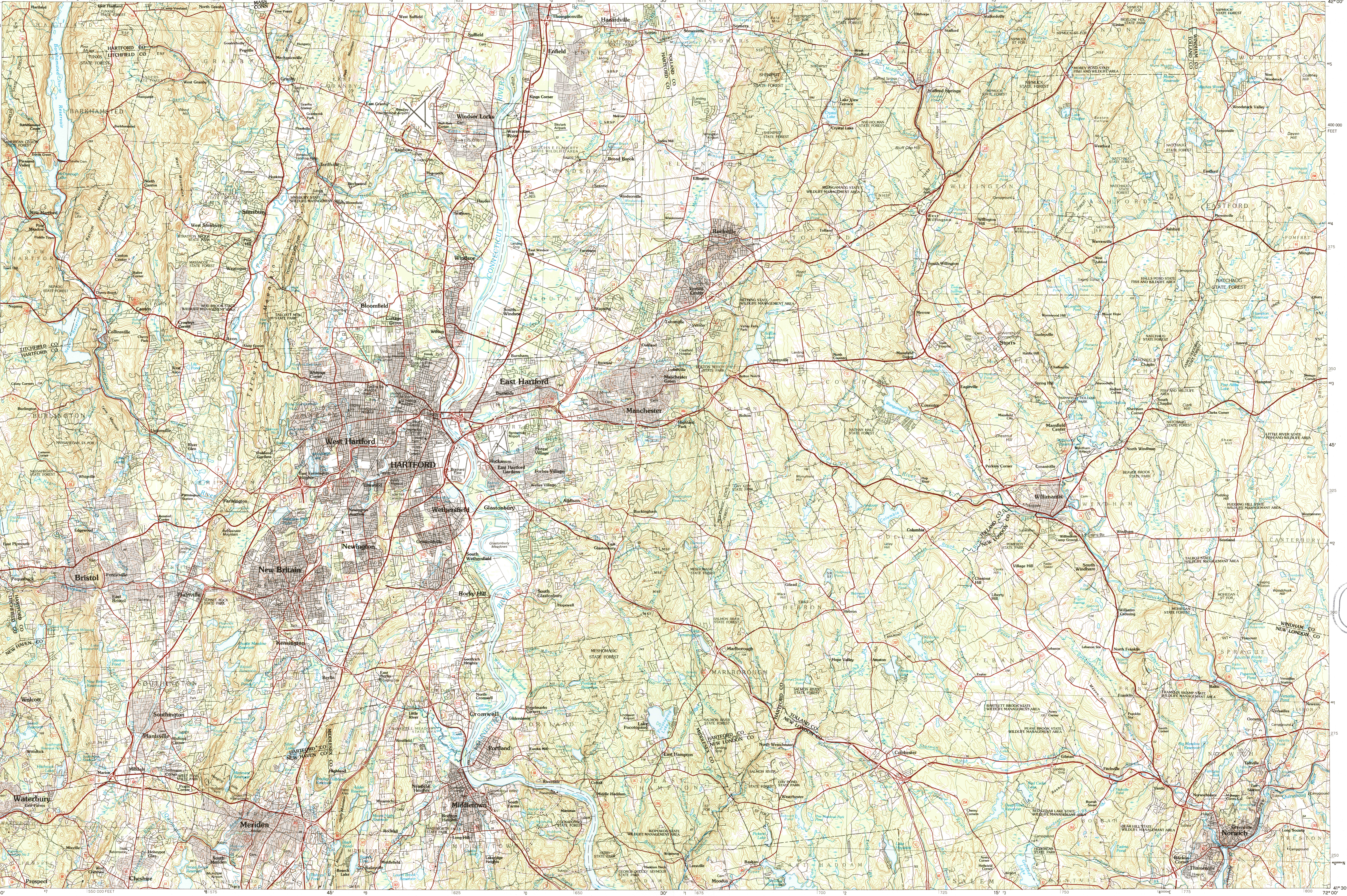
9 780607 134490



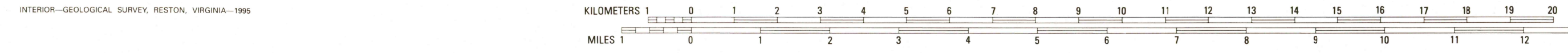
Topographic Map Symbols

- Primary highway, hard surface
- Secondary highway, hard surface
- Light duty road, principal street, hard or improved surface
- Other road or street, trail
- Route marker: Interstate, U.S., State
- Railroad: standard gage, narrow gage
- Bridge: overpass, underpass
- Tunnel, road, railroad
- Built up area, locality, elevation
- Airport: landing field, landing strip
- National boundary
- State boundary
- County boundary
- Civil township boundary
- National or State reservation boundary
- Land grant boundary
- U.S. public lands survey: range, township, section
- Range, township, section line: projected
- Power transmission line, pipeline
- Dam: dam with lock
- Cemetery, building
- Windmill; water well; spring
- Mine shaft; adit or cave; mine, quarry; gravel pit
- Campground, picnic area; U.S. location monument
- Ruins, cliff dwelling
- Disturbed surface: strip mine, lava, sand
- Contours: index, intermediate, supplementary
- Bathymetric contours: index, intermediate
- Stream, lake: perennial, intermittent
- Rapids, large and small; falls, large and small
- Area to be submerged, marsh, swamp
- Land subjected to controlled inundation, woodland
- Shrub, mangrove
- Orchard, vineyard

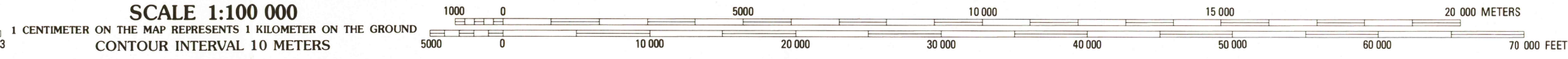
A pamphlet describing topographic maps is available on request



INTERIOR—GEOLOGICAL SURVEY, RESTON, VIRGINIA—1995



SCALE 1:100 000



HARTFORD, CONNECTICUT-MASSACHUSETTS

41072-E1-TM-100