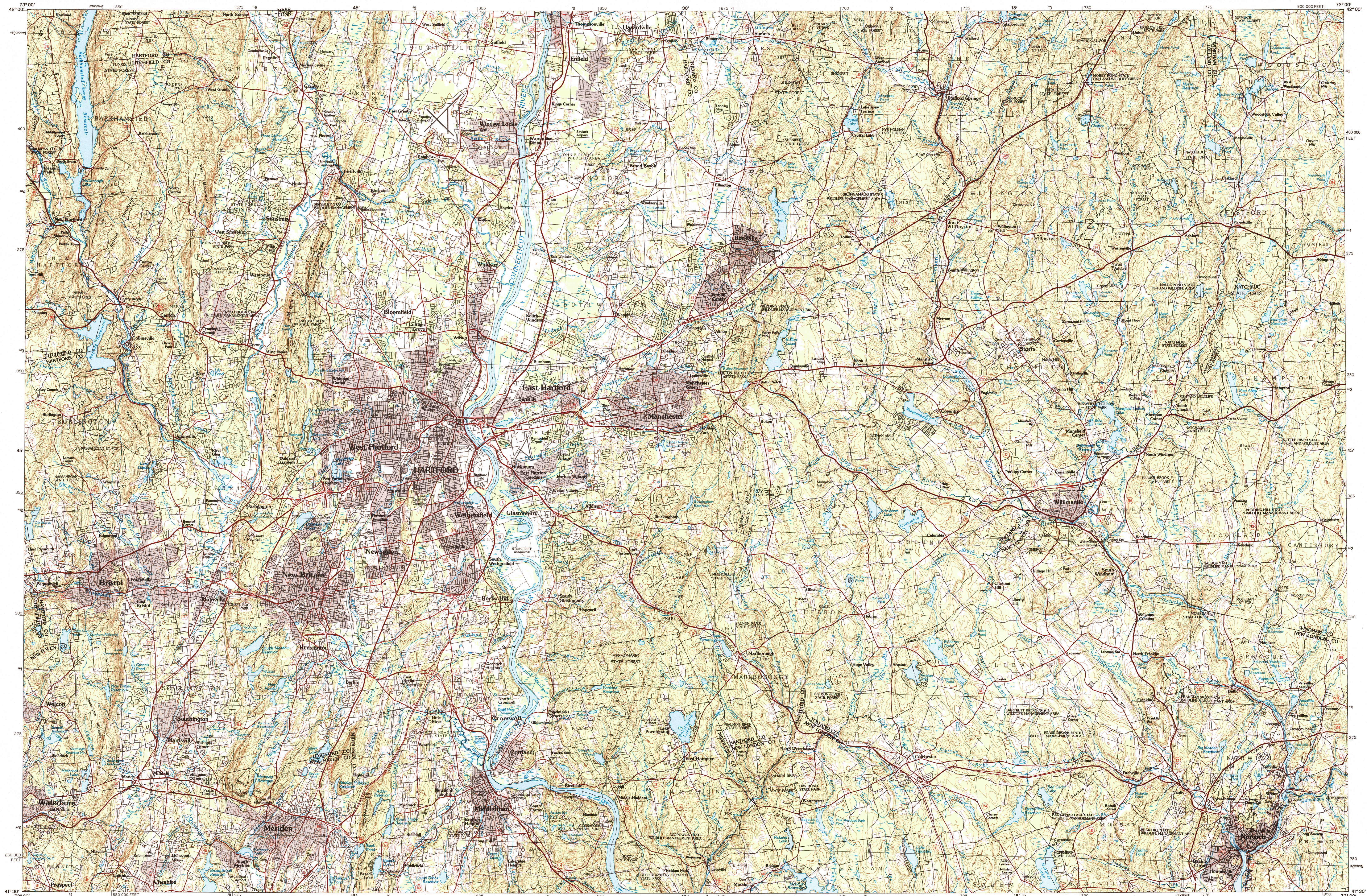


HARTFORD, CONNECTICUT-MASSACHUSETTS

30 X 60 MINUTE SERIES (TOPOGRAPHIC)



Hartford

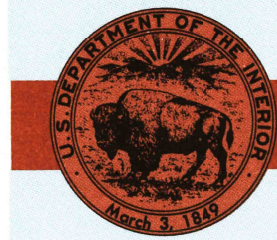
CONNECTICUT-MASSACHUSETTS

1:100 000-scale metric
topographic map



30 X 60 MINUTE QUADRANGLE
SHOWING

- Contours and elevations in meters
- Highways, roads and other manmade structures
- Water features
- Woodland areas
- Geographic names



U. S. GEOLOGICAL SURVEY

1994

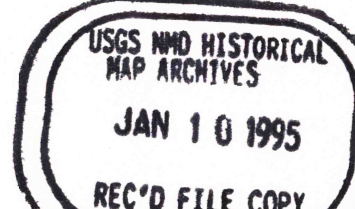
Produced by the United States Geological Survey
Compiled from USGS 1:24 000-scale topographic maps dated 1953-1984. Planimetry revised from aerial photographs taken 1989 and other source data. Revised information not field checked. Map edited 1994
North American Datum of 1927 (NAD 27). Projection and 10 000-meter grid: Universal Transverse Mercator, zone 18
25 000-foot ticks: Connecticut coordinate system.
The values of the shift between NAD 27 and North American Datum of 1983 (NAD 83) for 7.5-minute intersections are obtainable from National Geographic Survey NADCON software
There may be private inholdings within the boundaries of the National or State reservations shown on this map

CONTOUR INTERVAL 10 METERS
NATIONAL GEODETIC VERTICAL DATUM OF 1929
ELEVATIONS SHOWN TO THE NEAREST METER

THIS MAP COMPLIES WITH NATIONAL MAP ACCURACY STANDARDS

CONVERSION TABLE		DECLINATION DIAGRAM	ADJOINING MAPS			
Meters	Feet		1	2	3	
1	3.2808		4	5		
2	6.5617					
3	9.8425		6	7	8	
4	13.1234					
5	16.4042					
6	19.6850					
7	22.9659					
8	26.2467					
9	29.5275					
10	32.8084					
To convert meters to feet multiply by 3.2808		UTM grid convergence (GM) and 100 meters declination (DM) at center of map				
To convert feet to meters multiply by 0.3048		Diagram is approximate				

FOR SALE BY U.S. GEOLOGICAL SURVEY
DENVER, COLORADO 80225, OR RESTON, VIRGINIA 22092



topographic Map Symbols

Primary highway, hard surface	
Secondary highway, hard surface	
Light duty road, principal street, hard or improved surface	
Other road or street, trail	
Road marker: Interstate, U.S., State	
Railroad: standard gauge, narrow gauge	
Bridge: overpass, underpass	
Tunnel: road, railroad	
Built up area: locality, elevation	
Airport: landing field, landing strip	
National boundary	
State boundary	
County boundary	
Civil township boundary	
National or State reservation boundary	
Land grant boundary	
U.S. public lands survey: range, township, section	
Range, township, section line, projected	
Power transmission line: pipeline	
Dam; dam with lock	
Cemetery; building	
Windmill; water well; spring	
Mine shaft; adit; cave; mine; quarry; gravel pit	
Campground; picnic area, U.S. location monument	
Ruin; cliff dwelling	
Distorted surface: strip mine, lava, sand	
Contours: index, intermediate, supplementary	
Bathymetric contours: index, intermediate	
Stream, lake, perennial, intermittent	
Rapids, large and small; falls, large and small	
Area to be submerged; marsh, swamp	
Land subject to controlled inundation; woodland	
Scrub; mangrove	
Orchard; vineyard	

A pamphlet describing topographic maps is available on request

KILOMETERS 1 0 1 2 3 4 5 6 7 8 9 10 11 12 13 14 15 16 17 18 19 20
MILES 1 0 1 2 3 4 5 6 7 8 9 10 11 12 13

SCALE 1:100 000
1 CENTIMETER ON THE MAP REPRESENTS 1 KILOMETER ON THE GROUND
CONTOUR INTERVAL 10 METERS

HARTFORD, CONNECTICUT-MASSACHUSETTS

41072-E1-TM-100

1994