

UNITED STATES
DEPARTMENT OF THE INTERIOR
GEOLOGICAL SURVEY

670000m.E.

BRISTOL QUADRANGLE
CONNECTICUT
7.5 MINUTE SERIES (TOPOGRAPHIC)

AVON

41°45'

72°52'30"

41°45'

41°45'

41°45'

41°45'

41°45'

41°45'

41°45'

41°45'

41°45'

41°45'

41°45'

41°45'

41°45'

41°45'

41°45'

41°45'

41°45'

41°45'

41°45'

41°45'

41°45'

41°45'

41°45'

41°45'

41°45'

41°45'

41°45'

41°45'

41°45'

41°45'

41°45'

41°45'

41°45'

41°45'

41°45'

41°45'

41°45'

41°45'

41°45'

41°45'

41°45'

41°45'

41°45'

41°45'

41°45'

41°45'

41°45'

41°45'

41°45'

41°45'

41°45'

41°45'

41°45'

41°45'

41°45'

41°45'

41°45'

41°45'

41°45'

41°45'

41°45'

41°45'

41°45'

41°45'

41°45'

41°45'

41°45'

41°45'

41°45'

41°45'

41°45'

41°45'

41°45'

41°45'

41°45'

41°45'

41°45'

41°45'

41°45'

41°45'

41°45'

41°45'

41°45'

41°45'

41°45'

41°45'

41°45'

41°45'

41°45'

41°45'

41°45'

41°45'

41°45'

41°45'

41°45'

41°45'

41°45'

41°45'

41°45'

41°45'

41°45'

41°45'

41°45'

41°45'

41°45'

41°45'

41°45'

41°45'

41°45'

41°45'

41°45'

41°45'

41°45'

41°45'

41°45'

41°45'

41°45'

41°45'

41°45'

41°45'

41°45'

41°45'

41°45'

41°45'

41°45'

41°45'

41°45'

41°45'

41°45'

41°45'

41°45'

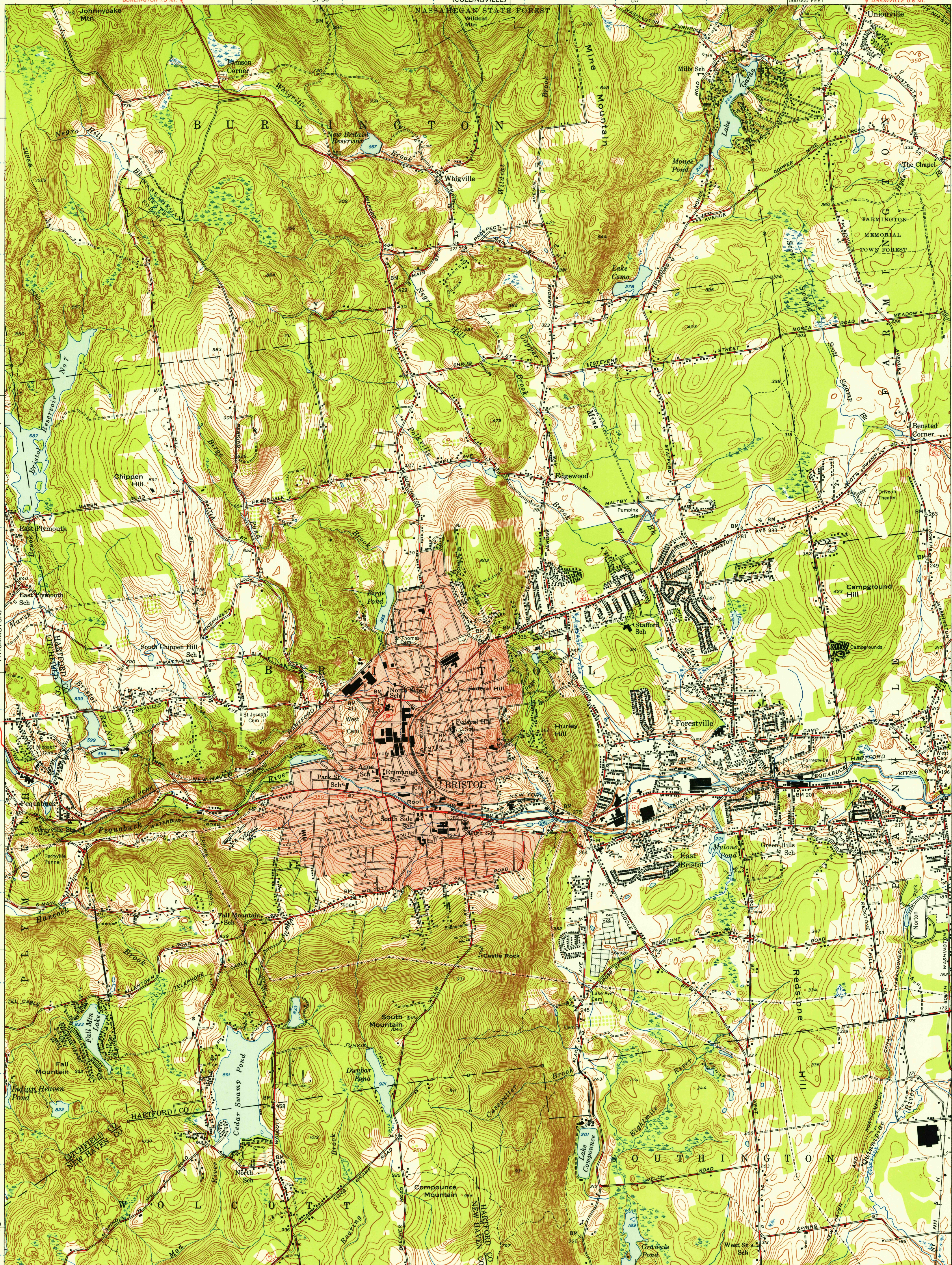
41°45'

41°45'

41°45'

41°45'

41°45'



Mapped, edited, and published by the Geological Survey
Control by USGS, USC&GS, and Connecticut Geodetic Survey
Topography by plane-table surveys 1943. Revised 1953
Polyconic projection. 1927 North American datum
10,000-foot grid based on Connecticut coordinate system
Red tint indicates area in which only
landmark buildings are shown
1,000-meter Universal Transverse Mercator grid, zone 18,
indicated by blue dotted ticks outside the neatline

13°
TRUE NORTH
MAGNETIC NORTH
APPROXIMATE MEAN
DECLINATION, 1953

SCALE 1:24,000
1 1000 0 1000 2000 3000 4000 5000 6000 7000 FEET
1 5 0 1 KILOMETER
CONTOUR INTERVAL 10 FEET
DATUM IS MEAN SEA LEVEL
THIS MAP COMPLIES WITH NATIONAL MAP ACCURACY STANDARDS
FOR SALE BY U. S. GEOLOGICAL SURVEY, WASHINGTON 25, D. C.
A FOLDER DESCRIBING TOPOGRAPHIC MAPS AND SYMBOLS IS AVAILABLE ON REQUEST

USGS
Historical Files
Topographic Division
CONNECTICUT
QUADRANGLE LOCATION

ROAD CLASSIFICATION
Heavy-duty 4 LANE 16 LANE Light-duty
Medium-duty 4 LANE 16 LANE Unimproved dirt
U. S. Route State Route
BRISTOL, CONN.
N4137.5-W7252.5/7.5
1953

U.S.G.S.
FILE COPY
TOPOGRAPHIC DIVISION

OCT 29 1956
4335