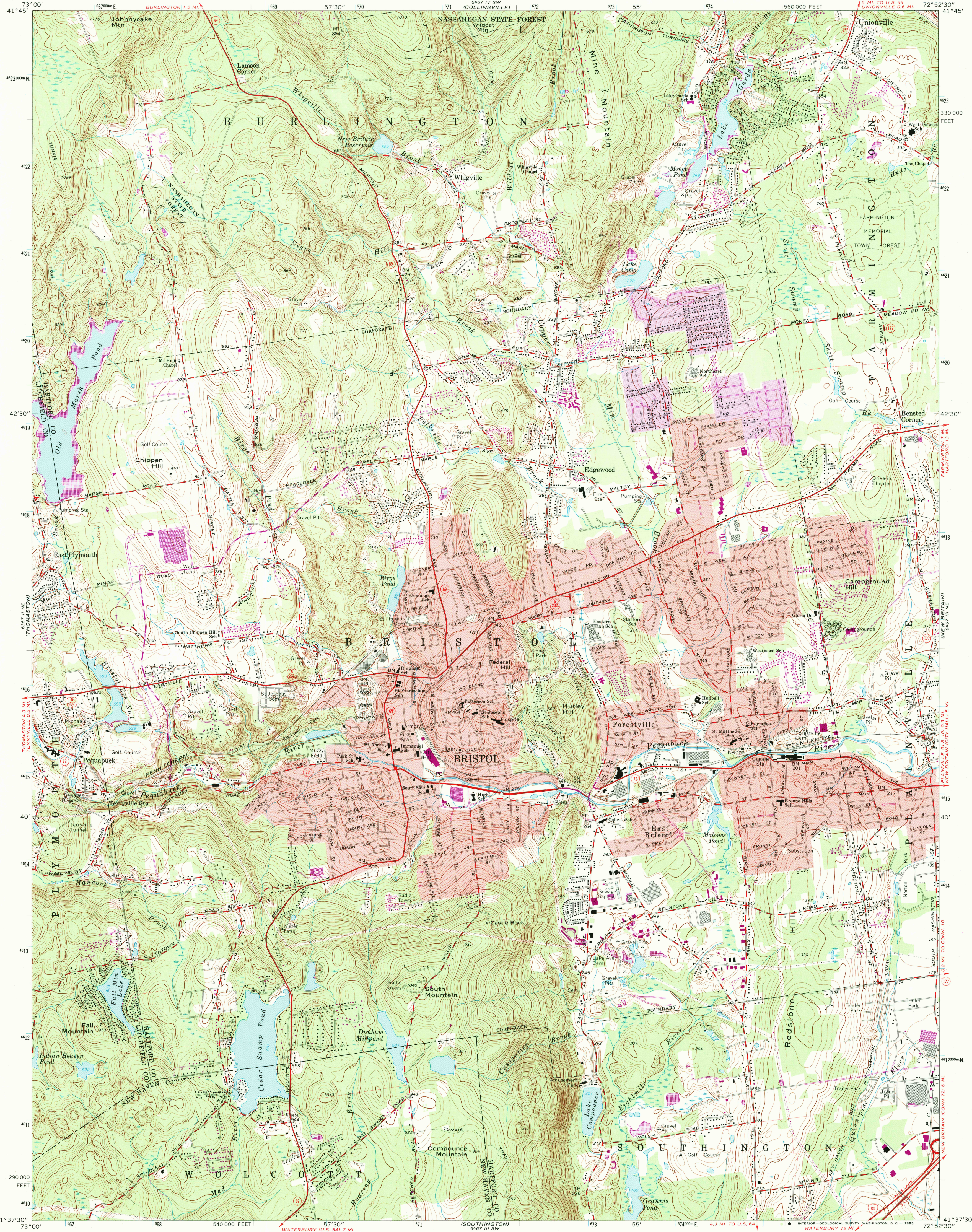
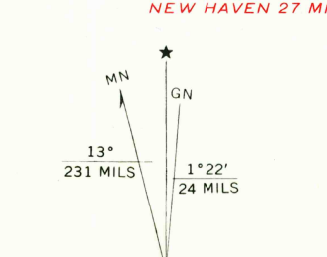


UNITED STATES
DEPARTMENT OF THE INTERIOR
GEOLOGICAL SURVEY

BRISTOL QUADRANGLE
CONNECTICUT
7.5 MINUTE SERIES (TOPOGRAPHIC)



Mapped, edited, and published by the Geological Survey
Revised in cooperation with Connecticut Highway Department
Control by USGS, USC&GS, and Connecticut Geodetic Survey
Topography by planetable surveys 1943. Revised 1966
Polyconic projection. 1927 North American datum
10,000-foot grid based on Connecticut coordinate system
1000-meter Universal Transverse Mercator grid ticks, zone 18,
shown in blue
Fine red dashed lines indicate selected fence and field lines where
generally visible on aerial photographs. This information is unchecked
Red tint indicates areas in which only landmark buildings are shown
Map photosinspected 1976
No major culture or drainage changes observed



THIS MAP COMPLIES WITH NATIONAL MAP ACCURACY STANDARDS
FOR SALE BY U.S. GEOLOGICAL SURVEY, WASHINGTON, D.C. 20242
A FOLDER DESCRIBING TOPOGRAPHIC MAPS AND SYMBOLS IS AVAILABLE ON REQUEST



ROAD CLASSIFICATION
Heavy-duty ——— Light-duty ———
Medium-duty ——— Unimproved dirt ———
Interstate Route ——— U.S. Route ——— State Route ———

BRISTOL, CONN.
N4137.5—W7252.5/7.5
PHOTOINSPECTED 1966
PHOTOREVISED 1972
AMS 6467 III NW—SERIES V816

Revisions shown in purple compiled in cooperation with
Connecticut Highway Department from aerial photographs
taken 1972. This information not field checked
Purple tint indicates extension of urban areas