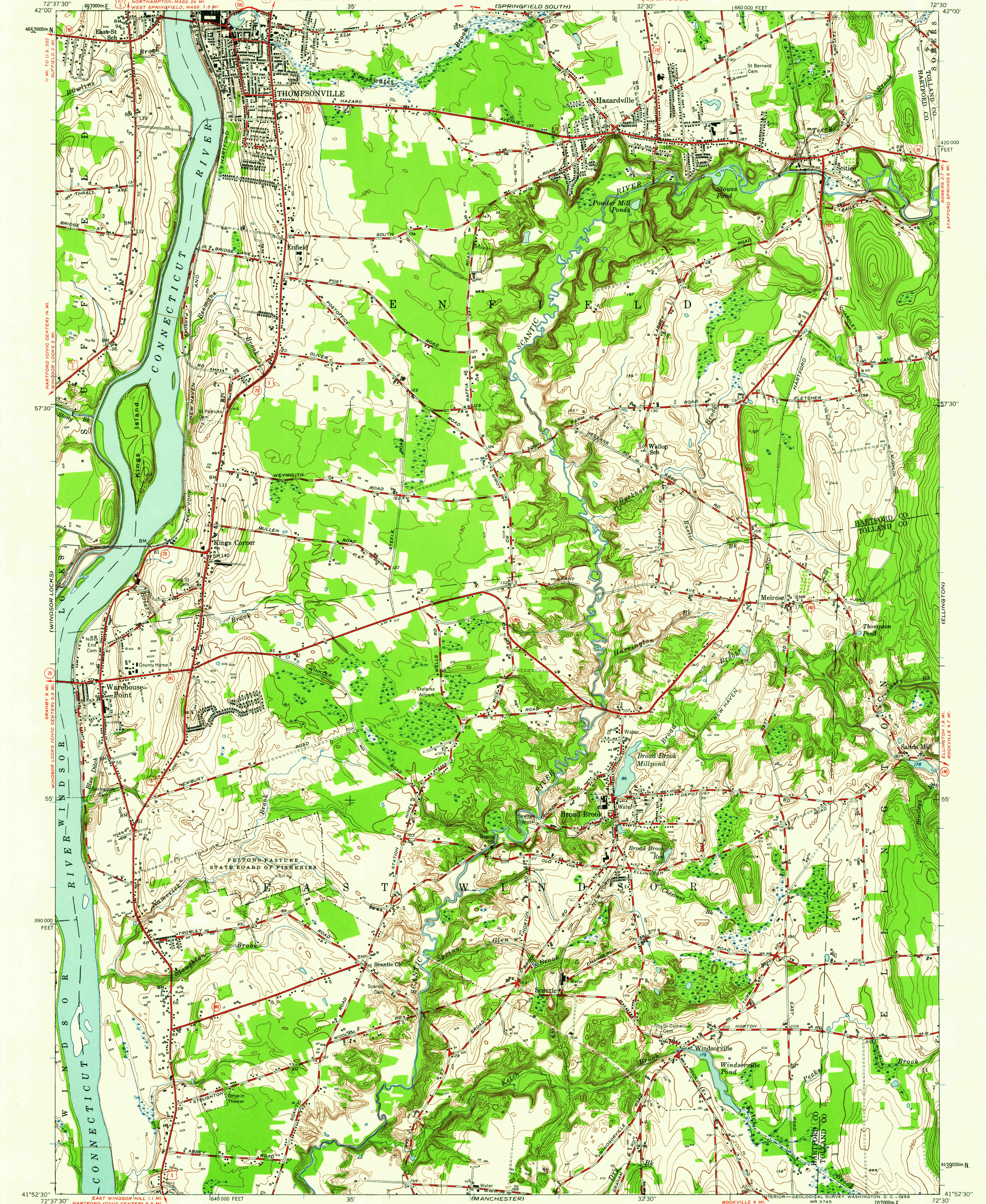


UNITED STATES
DEPARTMENT OF THE INTERIOR
GEOLOGICAL SURVEY

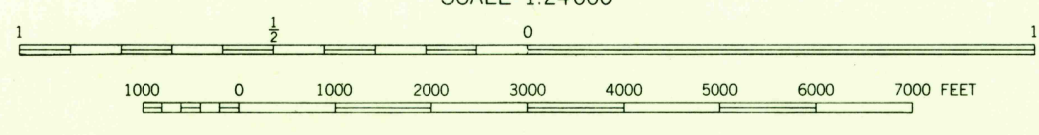
BROAD BROOK QUADRANGLE
CONNECTICUT
7.5 MINUTE SERIES (TOPOGRAPHIC)



Mapped, edited, and published by the Geological Survey
Control by USGS, USC&GS, and Connecticut Geodetic Survey
Culture and drainage in part compiled from aerial photographs
taken 1941. Topography by plane-table surveys 1942 and 1943
Revised 1953

Polycyclic projection. 1927 North American datum
10,000-foot grid based on Connecticut coordinate system
1000-meter Universal Transverse Mercator grid ticks,
zone 18, shown in blue

SCALE 1:24,000



CONTOUR INTERVAL 10 FEET
DATUM IS MEAN SEA LEVEL

USGS
Historical File
Topographic Division

ROAD CLASSIFICATION
Heavy-duty 2 LANE 16 LANE Light-duty
Medium-duty 2 LANE 16 LANE Unimproved dirt
U. S. Route
State Route



U.S.G.S.
FILE COPY
TOPOGRAPHIC DIVISION

BROAD BROOK, CONN.
N 4152.5-W 7230/7.5

1953

JAN -2 1959

2900