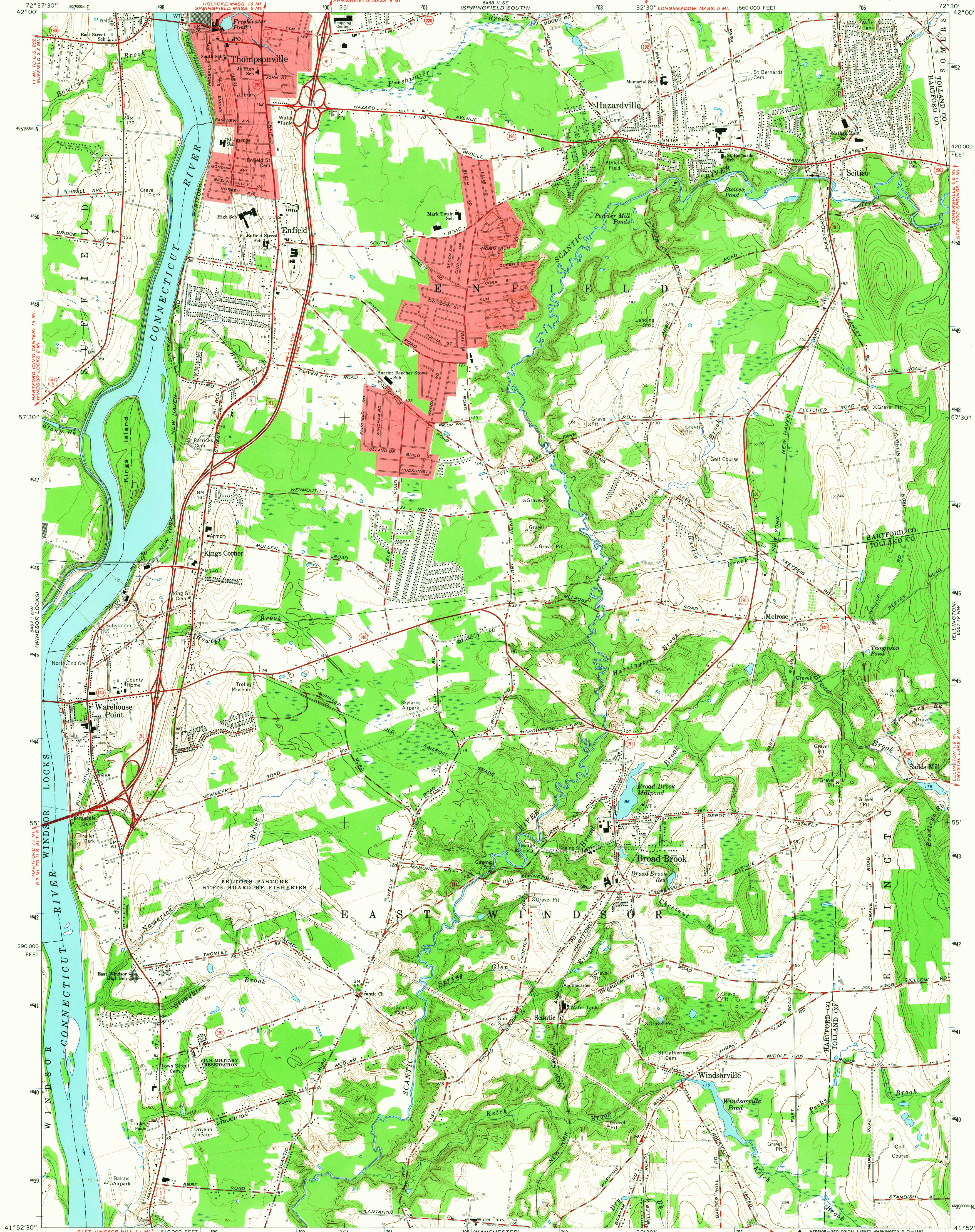


UNITED STATES  
DEPARTMENT OF THE INTERIOR  
GEOLOGICAL SURVEY

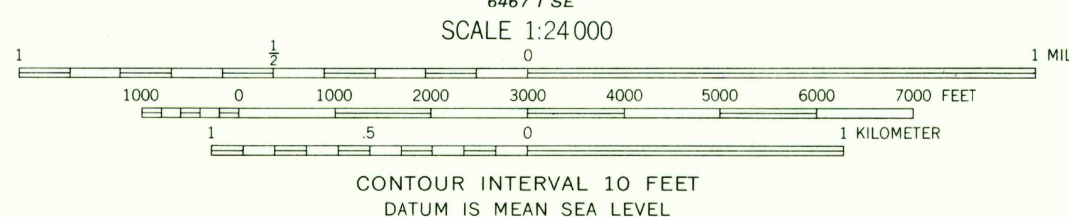
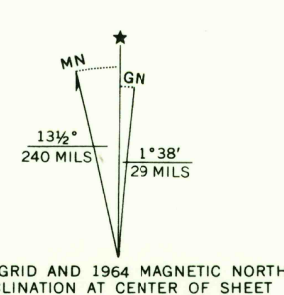
BROAD BROOK QUADRANGLE  
CONNECTICUT  
7.5 MINUTE SERIES (TOPOGRAPHIC)



Mapped, edited, and published by the Geological Survey  
Revised in cooperation with Connecticut Highway Department  
Control by USGS, USC&GS, and Connecticut Geodetic Survey  
Planimetry by photogrammetric methods from aerial photographs  
taken 1941. Topography by planimetric surveys 1942 and 1943  
Revised 1964

Polyconic projection. 1927 North American datum  
10,000-foot grid based on Connecticut coordinate system  
1000-meter Universal Transverse Mercator grid ticks,  
zone 18, shown in blue

Fine red dashed lines indicate selected fence and field lines where  
generally visible on aerial photographs. This information is unchecked  
Red tint indicates areas in which only landmark buildings are shown



USGS  
Historical File  
Topographic Division



ROAD CLASSIFICATION  
Heavy-duty ——— Light-duty ———  
Medium-duty ——— Unimproved dirt ———  
○ Interstate Route ○ U.S. Route ○ State Route

THIS MAP COMPLIES WITH NATIONAL MAP ACCURACY STANDARDS  
FOR SALE BY U.S. GEOLOGICAL SURVEY, WASHINGTON, D.C. 20242  
A FOLDER DESCRIBING TOPOGRAPHIC MAPS AND SYMBOLS IS AVAILABLE ON REQUEST

BROAD BROOK, CONN.  
N4152.5—W7230.7.5

1964  
AMS 6467 1 NE—SERIES V816

U.S.G.S.  
FILE COPY  
TOPOGRAPHIC DIVISION

OCT 26 1965  
4985