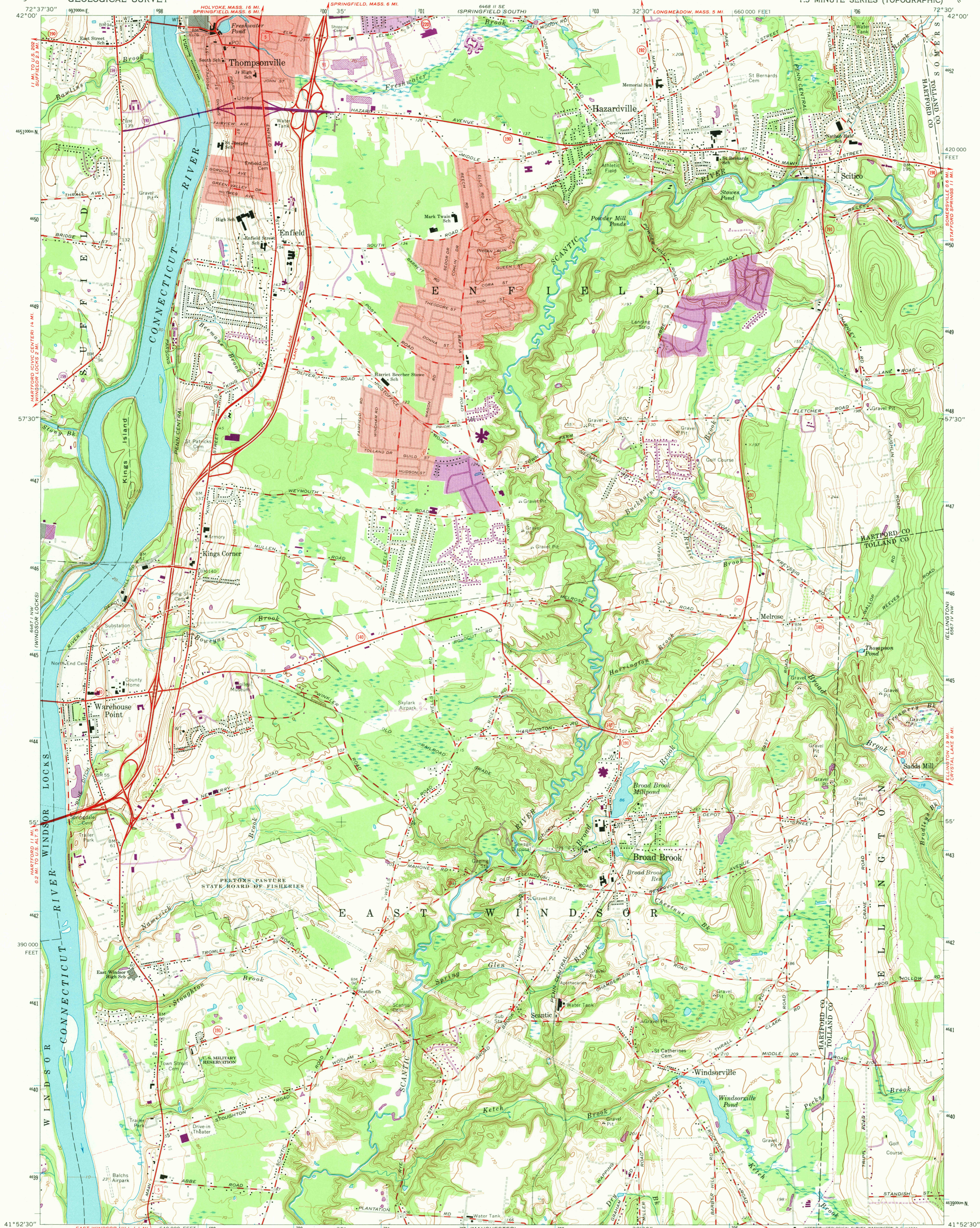


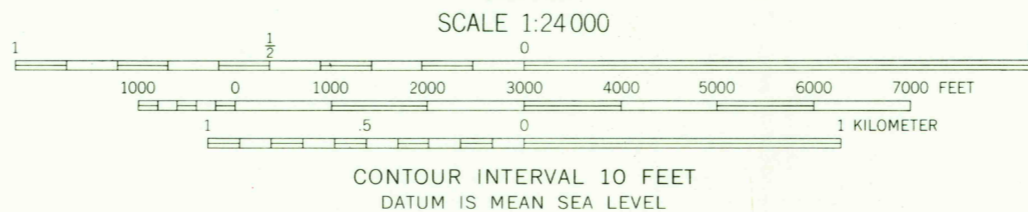
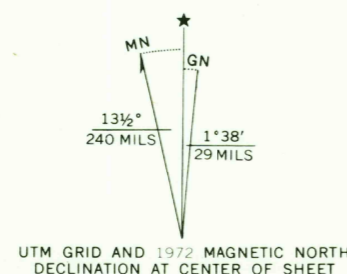
UNITED STATES
DEPARTMENT OF THE INTERIOR
GEOLOGICAL SURVEY

BROAD BROOK QUADRANGLE
CONNECTICUT
7.5 MINUTE SERIES (TOPOGRAPHIC)



Mapped, edited, and published by the Geological Survey
Revised in cooperation with Connecticut Highway Department
Control by USGS, USC&GS, and Connecticut Geodetic Survey
Planimetry by photogrammetric methods from aerial photographs
taken 1941. Topography by planetable surveys 1942 and 1943
Revised 1964

Polyconic projection. 1927 North American datum.
10,000-foot grid based on Connecticut coordinate system
1000-meter Universal Transverse Mercator grid ticks,
zone 18, shown in blue
Fine red dashed lines indicate selected fence and field lines where
generally visible on aerial photographs. This information is unchecked
Red tint indicates areas in which only landmark buildings are shown



ROAD CLASSIFICATION
Heavy-duty ——— Light-duty ———
Medium-duty ——— Unimproved dirt ———
Interstate Route U.S. Route State Route

BROAD BROOK, CONN.
N4152.5-W7230/7.5

Revisions shown in purple compiled in cooperation with
Connecticut Highway Department from aerial photographs
taken 1972. This information not field checked
Purple tint indicates extension of urban areas

1964
PHOTOREVISED 1972
AMS 6467 1 NE-SERIES 1816

4685