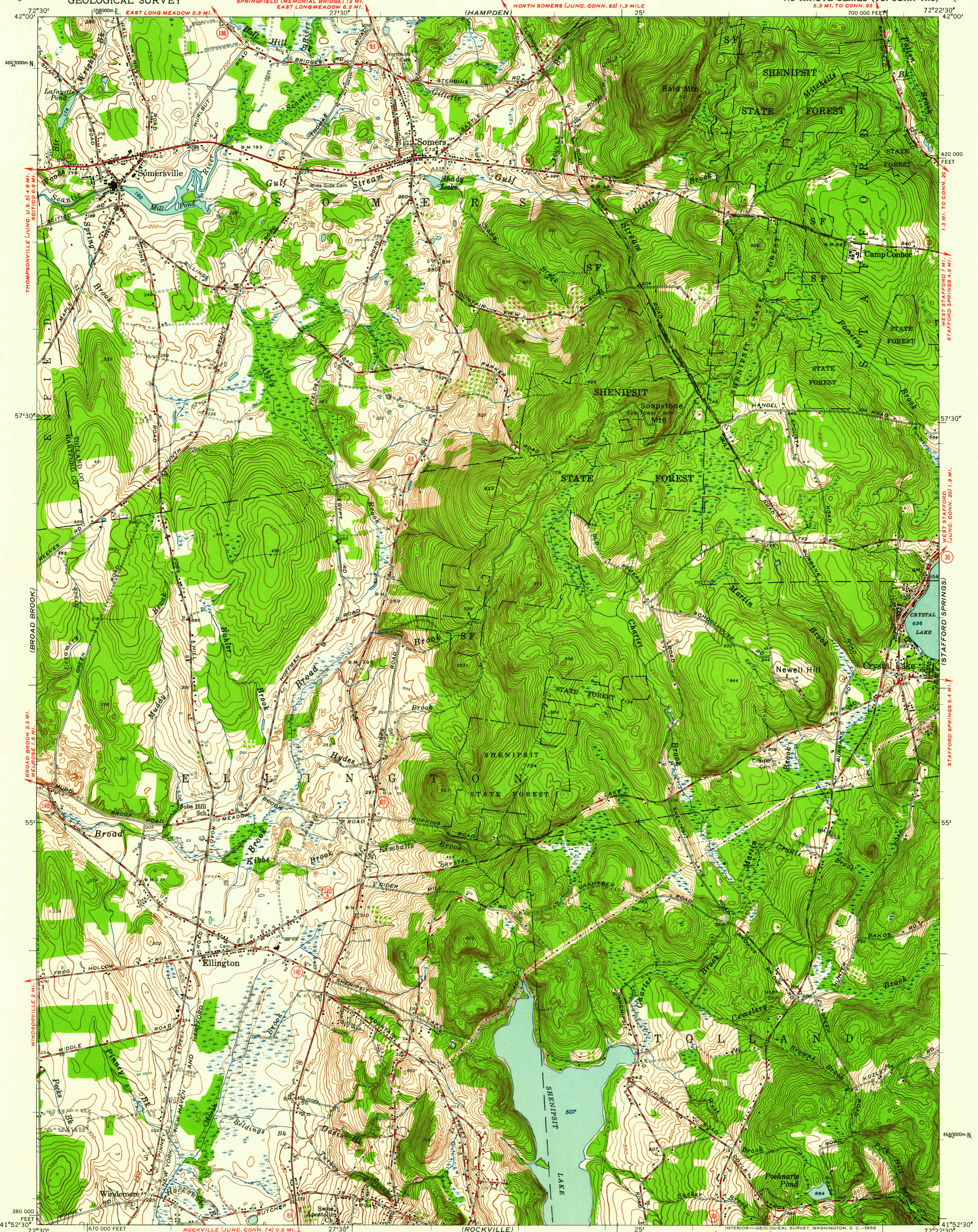


UNITED STATES
DEPARTMENT OF THE INTERIOR
GEOLOGICAL SURVEY

ELLINGTON QUADRANGLE
CONNECTICUT
7.5 MINUTE SERIES (TOPOGRAPHIC)
700 000 FEET



SPRINGFIELD (MEMORIAL BRIDGE) 12 MI. EAST LONG MEADOW 5.3 MI. NORTH SOMERS (JUNC. CONN. 83) 1.3 MILE (HAMPDEN) THOMPSONVILLE (JUNC. U.S. 9) 4.8 MI. SCITICO 0.9 MI. WEST STAFFORD 1 MI. WEST STAFFORD (JUNC. CONN. 30) 1.9 MI. STAFFORD SPRINGS 4.5 MI. STAFFORD SPRINGS 5.4 MI. (STAFFORD SPRINGS) (MONSON)

72°30' 42°00' 4652000 N
1708900 E
27130'
25'
72°22'30" 42°00'
57130'
55'
55'
41°52'30" 4640000 N
72°30' 1670000 FEET
27130'
25'
72°22'30" 41°52'30"

Maped, edited, and published by the Geological Survey
Control by USGS, USC&GS, and Connecticut Geodetic Survey
Topography by plane-table surveys 1942-1943. Revised 1953
Polyconic projection. 1927 North American datum
10,000-foot grid based on Connecticut coordinate system
1000-meter Universal Transverse Mercator grid ticks, zone 18, shown in blue

SCALE 1:24 000
1 MILE
1000 0 1000 2000 3000 4000 5000 6000 7000 FEET
1 5 0 1 KILOMETER
CONTOUR INTERVAL 10 FEET
DATUM IS MEAN SEA LEVEL

USGS
Historical File
Topographic Division

ROAD CLASSIFICATION
Heavy-duty 4 LANE 2 LANE Light-duty
Medium-duty 4 LANE 2 LANE Unimproved dirt
U. S. Route State Route

QUADRANGLE LOCATION
CONNECTICUT

USGS
FILE COPY
TOPOGRAPHIC DIVISION

ELLINGTON, CONN.
N4152.5-W7222.5/7.5
1953

APPROXIMATE MEAN DECLINATION, 1953

THIS MAP COMPLIES WITH NATIONAL MAP ACCURACY STANDARDS
FOR SALE BY U.S. GEOLOGICAL SURVEY, WASHINGTON 25, D.C.
A FOLDER DESCRIBING TOPOGRAPHIC MAPS AND SYMBOLS IS AVAILABLE ON REQUEST