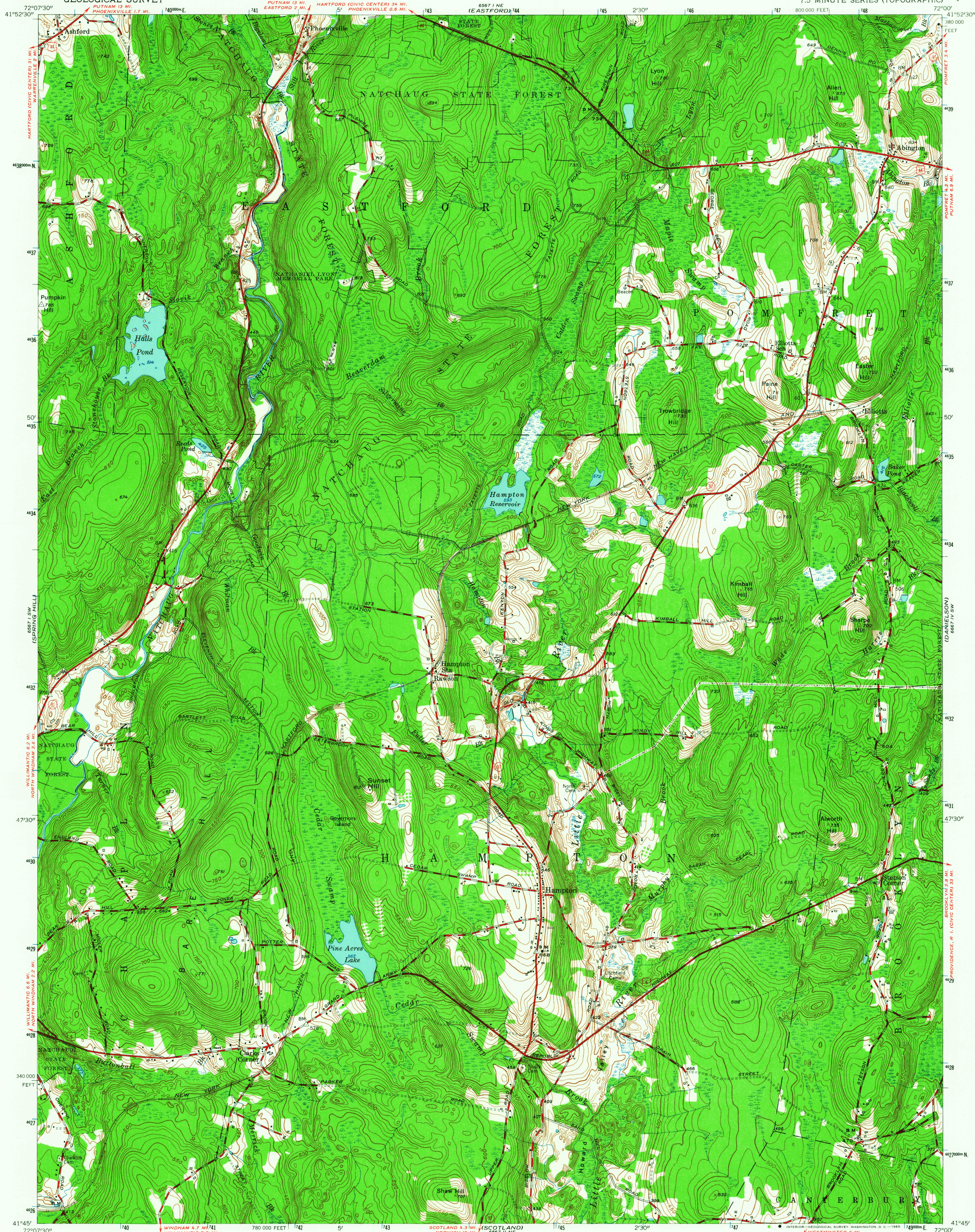
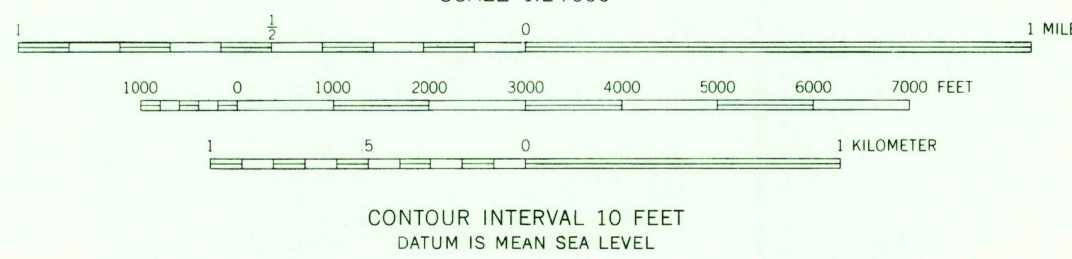
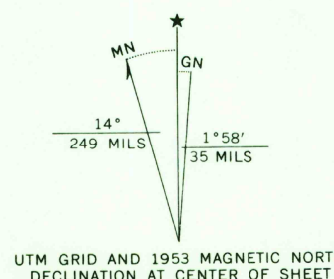


UNITED STATES  
DEPARTMENT OF THE INTERIOR  
GEOLOGICAL SURVEY

HAMPTON QUADRANGLE  
CONNECTICUT—WINDHAM CO.  
7.5 MINUTE SERIES (TOPOGRAPHIC)



Mapped, edited, and published by the Geological Survey  
Control by USGS and Connecticut Geodetic Survey  
Topography from plane-table surveys 1943. Revised 1953  
Polyconic projection. 1927 North American datum  
10,000-foot grid based on Connecticut coordinate system  
1000-meter Universal Transverse Mercator grid ticks,  
zone 18, shown in blue



ROAD CLASSIFICATION  
Heavy-duty 4 LANE 6 LANE Light-duty  
Medium-duty 4 LANE 6 LANE Unimproved dirt  
U. S. Route State Route

HAMPTON, CONN.  
N 4145—W 7200/7.5

1953

AMS 6567 1 SE—SERIES V816

THIS MAP COMPLIES WITH NATIONAL MAP ACCURACY STANDARDS  
FOR SALE BY U. S. GEOLOGICAL SURVEY, WASHINGTON 25, D. C.  
A FOLDER DESCRIBING TOPOGRAPHIC MAPS AND SYMBOLS IS AVAILABLE ON REQUEST

MAR 17 1965  
4180  
U.S.G.S.  
FILE COPY  
TOPOGRAPHIC DIVISION