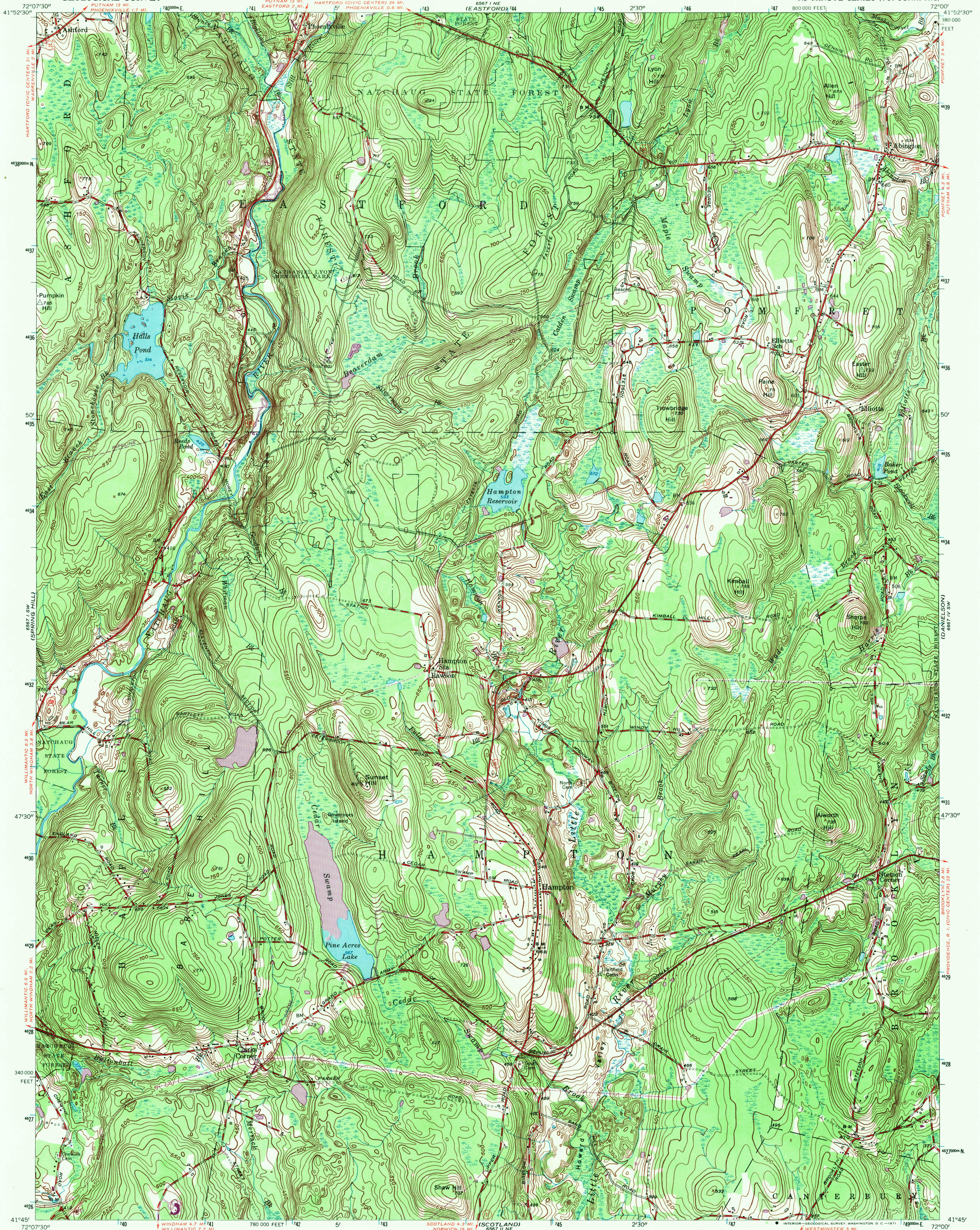


UNITED STATES  
DEPARTMENT OF THE INTERIOR  
GEOLOGICAL SURVEY

HAMPTON QUADRANGLE  
CONNECTICUT—WINDHAM CO.  
7.5 MINUTE SERIES (TOPOGRAPHIC)



Mapped, edited, and published by the Geological Survey

Control by USGS and Connecticut Geodetic Survey

Topography from plane-table surveys 1943. Revised 1953

Polyconic projection. 1927 North American datum

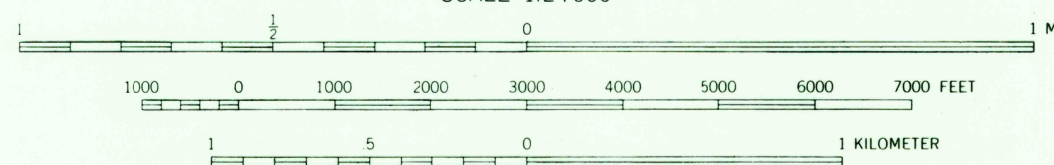
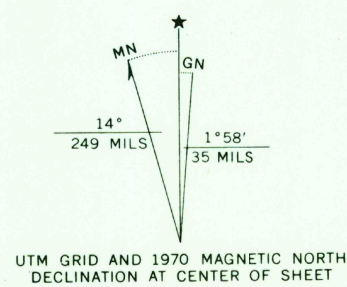
10,000-foot grid based on Connecticut coordinate system

1000-meter Universal Transverse Mercator grid ticks,

zone 18, shown in blue

Revisions shown in purple compiled from aerial photographs

taken 1970. This information not field checked



CONTOUR INTERVAL 10 FEET  
DATUM IS MEAN SEA LEVEL

THIS MAP COMPLIES WITH NATIONAL MAP ACCURACY STANDARDS  
FOR SALE BY U.S. GEOLOGICAL SURVEY, WASHINGTON, D. C. 20242  
A FOLDER DESCRIBING TOPOGRAPHIC MAPS AND SYMBOLS IS AVAILABLE ON REQUEST

USGS  
Historical File  
Topographic Division



ROAD CLASSIFICATION  
Heavy-duty 4 LANE 16 LANE Light-duty  
Medium-duty 4 LANE 16 LANE Unimproved dirt  
U. S. Route State Route

U.S.G.S.  
FILE COPY  
TOPOGRAPHIC DIVISION  
HISTORICAL

HAMPTON, CONN.  
N4145—W7200/7.5  
1953  
PHOTOREVISED 1970  
AMS 6567 I SE—SERIES V816

3810  
JUL 27 1971  
HISTORICAL