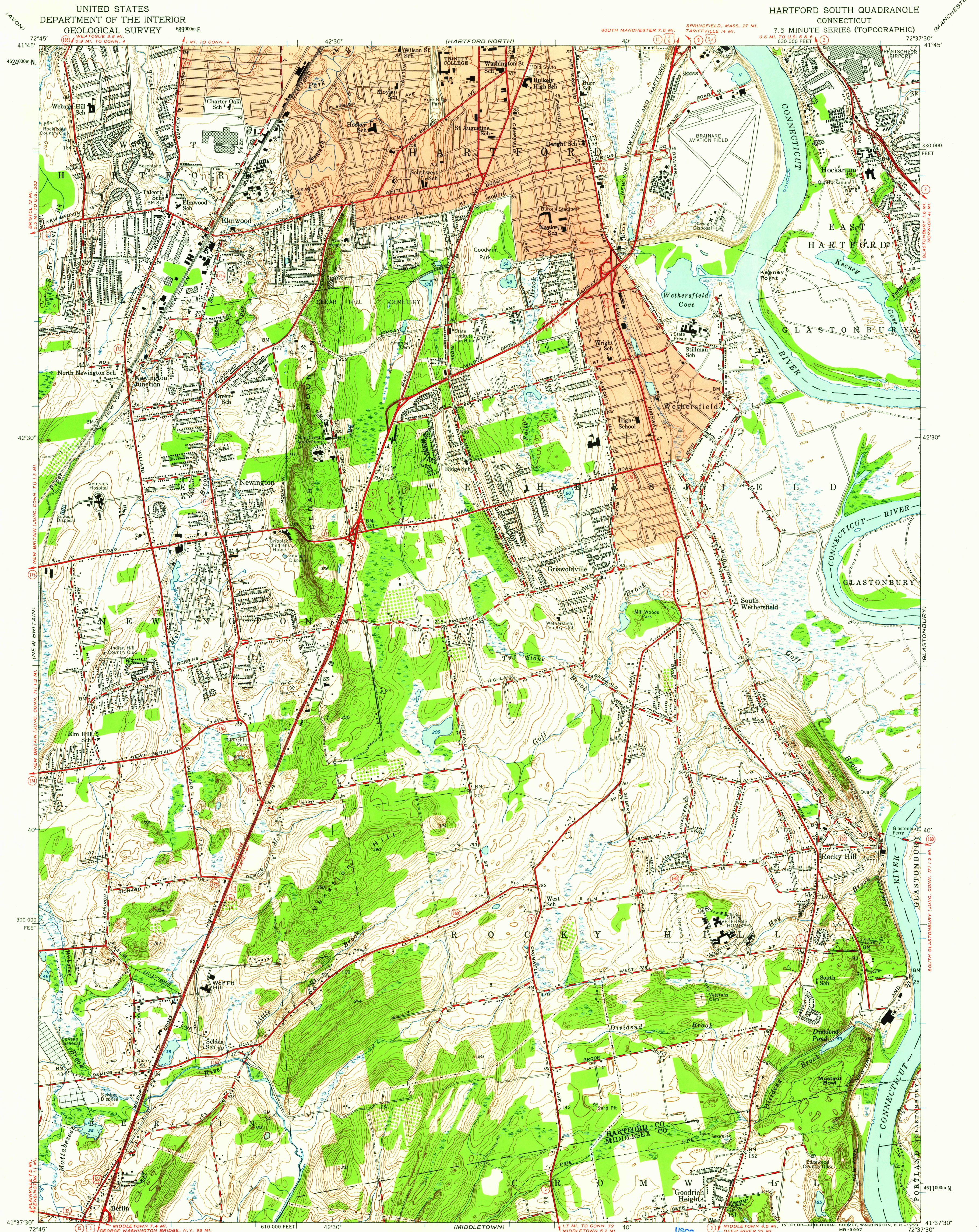


UNITED STATES
DEPARTMENT OF THE INTERIOR
GEOLOGICAL SURVEY

HARTFORD SOUTH QUADRANGLE
CONNECTICUT
7.5 MINUTE SERIES (TOPOGRAPHIC)

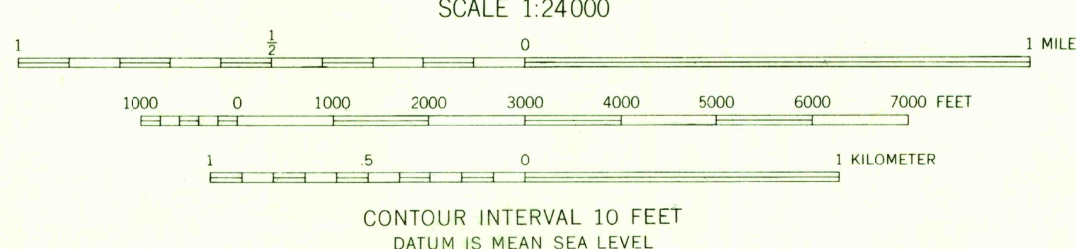


Mapped by the Geological Survey and City of Hartford
Edited and published by the Geological Survey

Control by USGS, USCGS, and Connecticut Geodetic Survey
Culture and drainage in part compiled from aerial photographs
taken 1941. Topography by plane-table surveys 1942 and 1943.
Revised 1952 from 1951 and 1952 photography

Polyconic projection, 1927 North American datum
10,000-foot grid based on Connecticut coordinate system
1000-meter Universal Transverse Mercator grid ticks,
zone 18, shown in blue
Red tint indicates areas in which only
landmark buildings are shown

TRUE NORTH
MAGNETIC NORTH
APPROXIMATE MEAN
DECLINATION, 1952



USGS
Historical File
Topographic Division



ROAD CLASSIFICATION
Heavy-duty ——— 4 LANE 16 LANE
Medium-duty ——— 4 LANE 16 LANE
Light-duty ———
Unimproved dirt ———
U.S. Route
State Route

U.S.G.S.
FILE COPY
TOPOGRAPHIC DIVISION

HARTFORD SOUTH, CONN.
N4137.5-W7237.5/7.5
1952

THIS MAP COMPLIES WITH NATIONAL MAP ACCURACY STANDARDS
FOR SALE BY U.S. GEOLOGICAL SURVEY, WASHINGTON 25, D.C.
A FOLDER DESCRIBING TOPOGRAPHIC MAPS AND SYMBOLS IS AVAILABLE ON REQUEST

FEB - 3 1959
3290