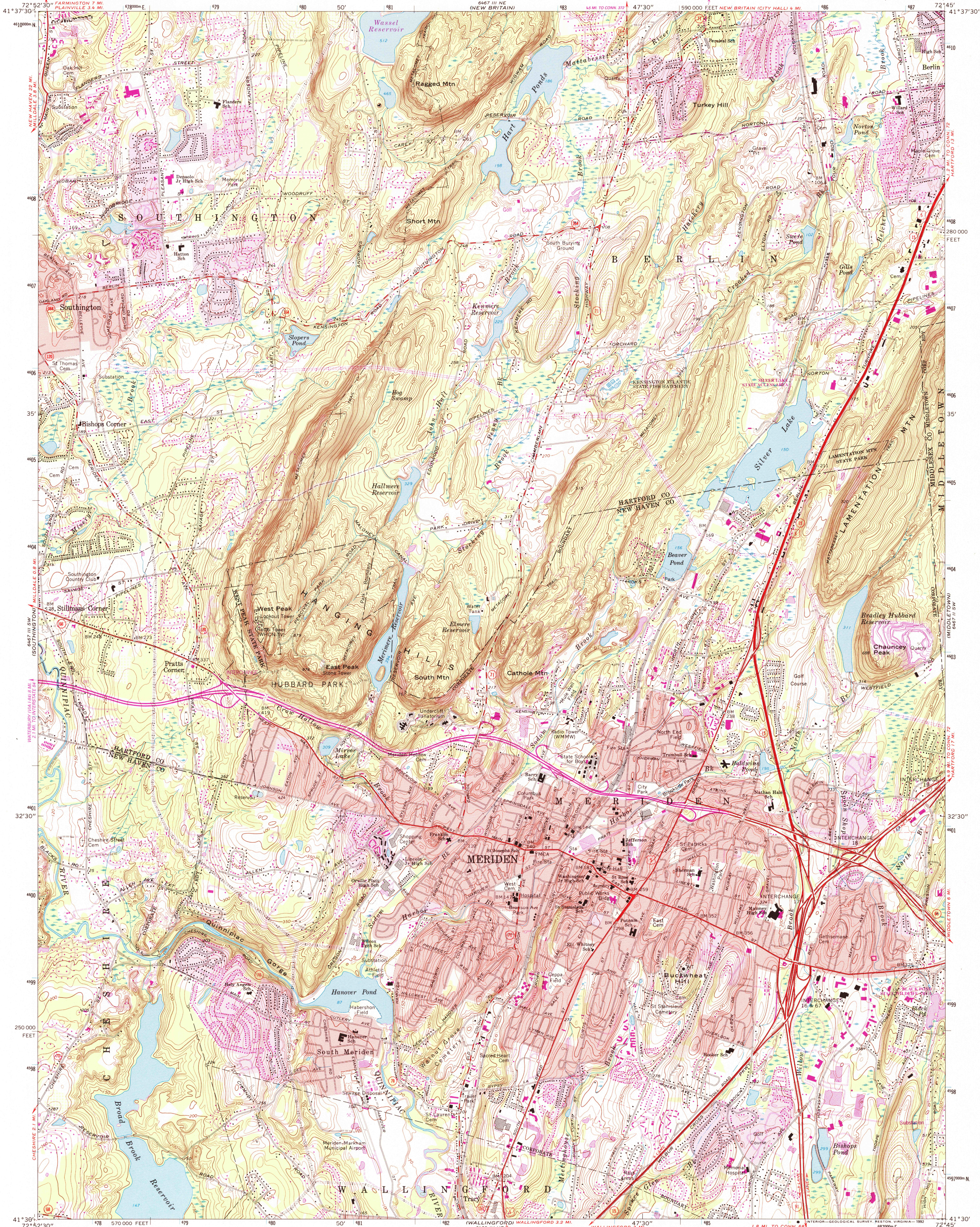
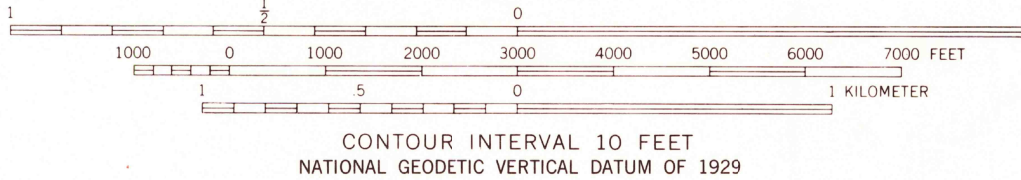
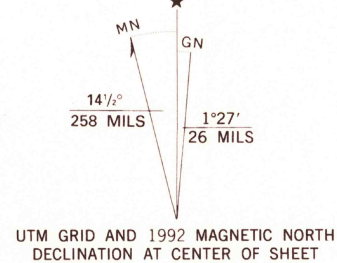


UNITED STATES
DEPARTMENT OF THE INTERIOR
GEOLOGICAL SURVEY

MERIDEN QUADRANGLE
CONNECTICUT
7.5 MINUTE SERIES (TOPOGRAPHIC)



Mapped, edited, and published by the Geological Survey
Revised in cooperation with Connecticut Highway Department
Control by USGS, NOS/NOAA, and Connecticut Geodetic Survey
Topography by plane-table surveys 1943-1944. Revised from
aerial photographs taken 1966. Field checked 1967
Polyconic projection. 10,000-foot grid ticks based on
Connecticut coordinate system
1000-meter Universal Transverse Mercator grid ticks,
zone 18, shown in blue
1927 North American Datum
To place on the predicted North American Datum 1983
move the projection lines 5 meters south and
38 meters west as shown by dashed corner ticks
Fine red dashed lines indicate selected fence and field lines where
generally visible on aerial photographs. This information is unchecked
Red tint indicates areas in which only landmark buildings are shown
There may be private inholdings within the boundaries of
the National or State reservations shown on this map



THIS MAP COMPLIES WITH NATIONAL MAP ACCURACY STANDARDS
FOR SALE BY U.S. GEOLOGICAL SURVEY
DENVER, COLORADO 80225, OR RESTON, VIRGINIA 22092
A FOLDER DESCRIBING TOPOGRAPHIC MAPS AND SYMBOLS IS AVAILABLE ON REQUEST

Revisions shown in purple and woodland compiled
from aerial photographs taken 1991 and other sources
Contours not revised. This information not field checked
Map edited 1992
Purple tint indicates extension of urban areas



ROAD CLASSIFICATION
Primary highway, all weather, improved surface
Secondary highway, all weather, hard surface
Light-duty road, all weather, improved surface
Unimproved road, fair or dry weather
Interstate Route
U. S. Route
State Route

MERIDEN, CONN.
41072-E7-TF-024

1967
REVISED 1992
DMA 6467 III SE-SERIES V816

