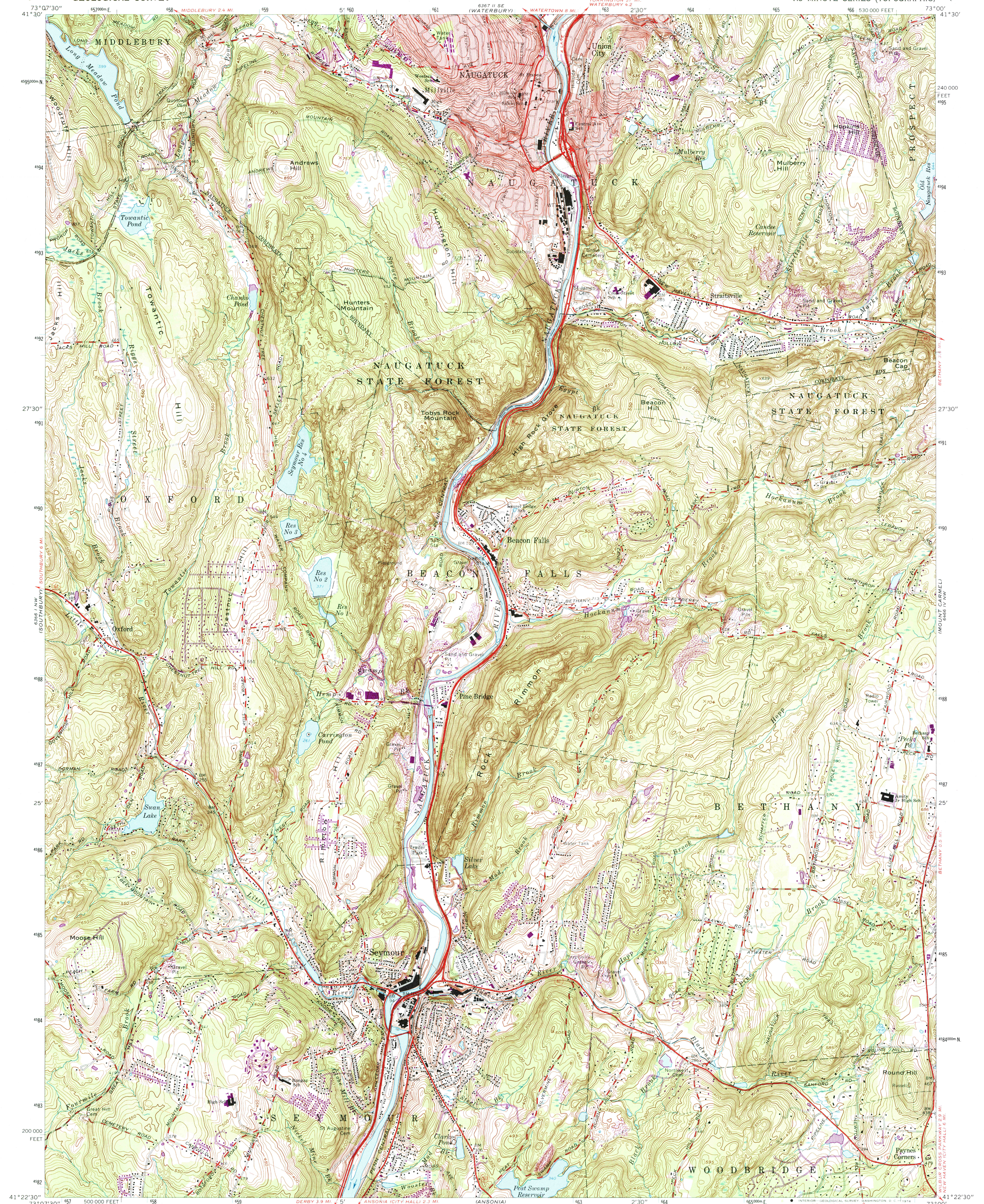
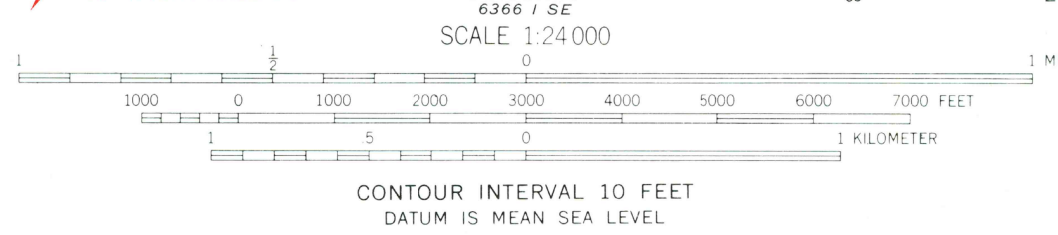
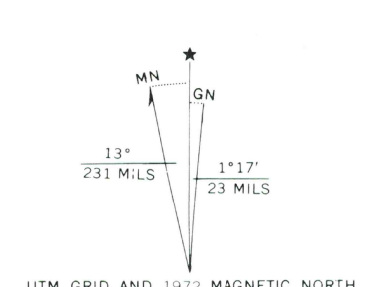


687 13' N (WOODBRIDGE)
687 13' S (WOODBRIDGE)
687 13' N (WOODBRIDGE)
687 13' S (WOODBRIDGE)

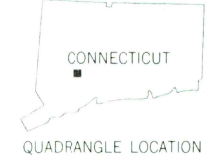
687 13' S (WOODBRIDGE)
687 13' N (WOODBRIDGE)
687 13' S (WOODBRIDGE)
687 13' N (WOODBRIDGE)



Mapped, edited, and published by the Geological Survey
Control by USGS, USC&GS, and Connecticut Geodetic Survey
Topography by photogrammetric methods from aerial photographs taken
1949 and 1950. Field checked 1954. Revised 1964
Polyconic projection. 1927 North American datum
10,000-foot grid based on Connecticut coordinate system
1000-meter Universal Transverse Mercator grid ticks,
zone 18, shown in blue
Fine red dashed lines indicate selected fence and field lines where
generally visible on aerial photographs. This information is unchecked
Red tint indicates areas in which only landmark buildings are shown
Revisions shown in purple compiled in cooperation with
Connecticut Highway Department from aerial photographs
taken 1972. This information not field checked



ROAD CLASSIFICATION	
Heavy-duty	Light-duty
Medium-duty	Unimproved dirt
State Route	



THIS MAP COMPLIES WITH NATIONAL MAP ACCURACY STANDARDS
FOR SALE BY U.S. GEOLOGICAL SURVEY, WASHINGTON, D. C. 20242
A FOLDER DESCRIBING TOPOGRAPHIC MAPS AND SYMBOLS IS AVAILABLE ON REQUEST

NAUGATUCK, CONN.
N4122.5-W7300/7.5
1964
PHOTOREVISED 1972
AMS 6366 1 NE-SERIES V816

699