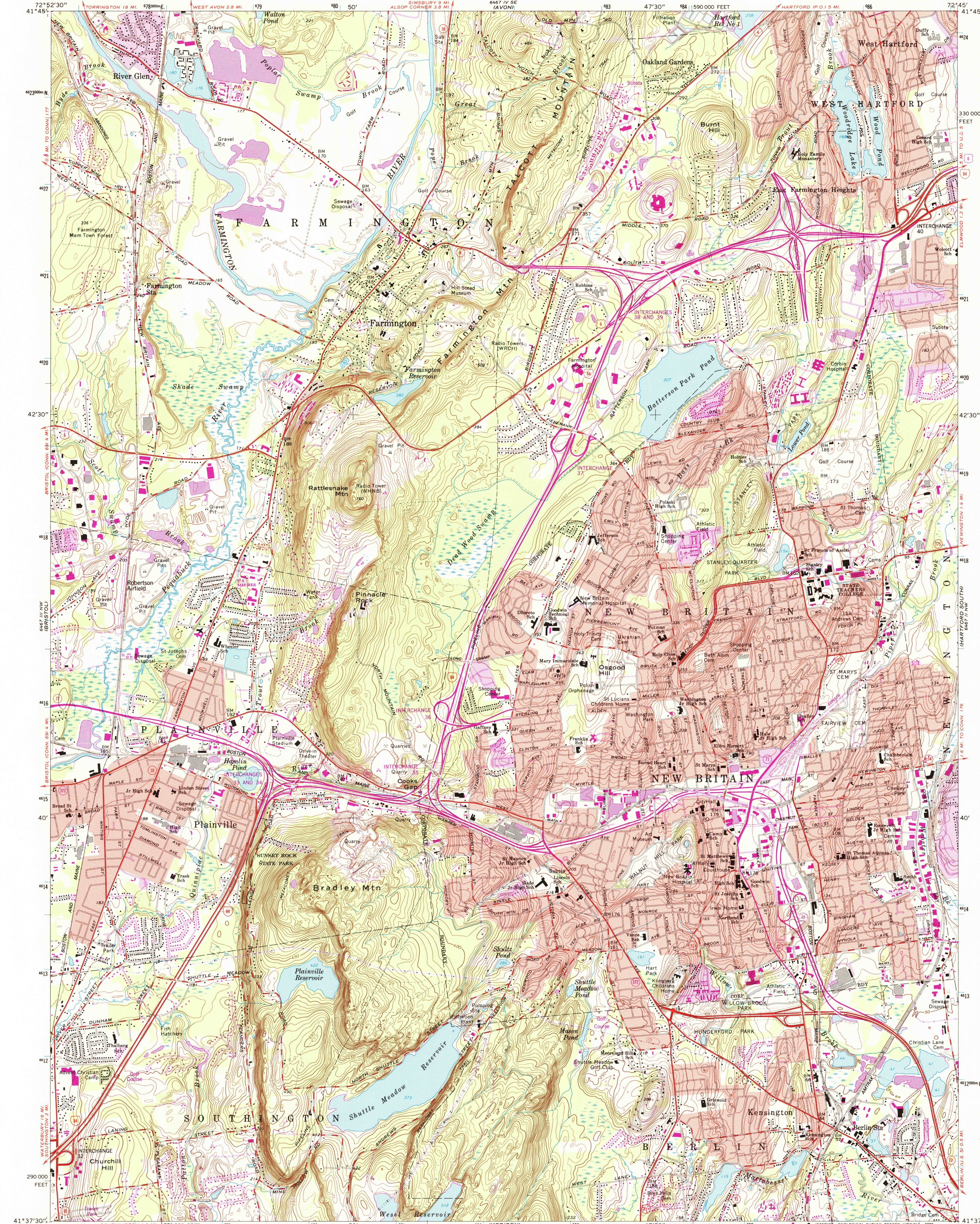
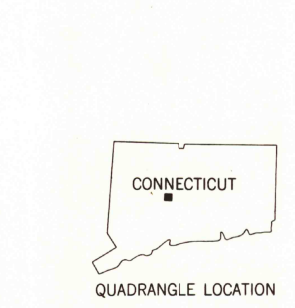
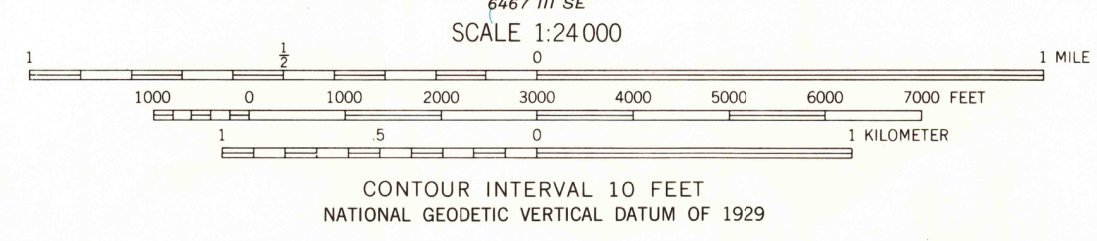
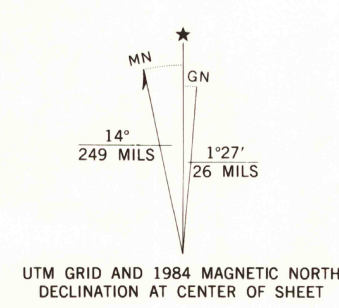


UNITED STATES  
DEPARTMENT OF THE INTERIOR  
GEOLOGICAL SURVEY

NEW BRITAIN QUADRANGLE  
CONNECTICUT—HARTFORD CO.  
7.5 MINUTE SERIES (TOPOGRAPHIC)



Mapped, edited, and published by the Geological Survey  
Revised in cooperation with Connecticut Highway Department  
Control by USGS, NOS/NOAA, and Connecticut Geodetic Survey  
Planimetry by photogrammetric methods from aerial photographs taken  
1941. Topography by planetable surveys 1943. Revised 1966  
Polyconic projection. 10,000-foot grid ticks based on  
Connecticut coordinate system  
1000-meter Universal Transverse Mercator grid ticks,  
zone 18, shown in blue  
1927 North American Datum  
To place on the predicted North American Datum 1983  
move the projection lines 5 meters south and  
38 meters west as shown by dashed corner ticks  
Red tint indicates areas in which only landmark buildings are shown  
There may be private inholdings within the boundaries of  
the National or State reservations shown on this map



ROAD CLASSIFICATION  
Heavy-duty ——— Light-duty ———  
Medium-duty ——— Unimproved dirt ———  
Interstate Route U.S. Route State Route

Revisions shown in purple and woodland compiled in  
cooperation with State of Connecticut agencies from aerial  
photographs taken 1982 and other sources. This  
information not field checked. Map edited 1984  
Purple tint indicates extension of urban areas

NEW BRITAIN, CONN.  
41072-F7-TF-024  
1966  
PHOTOREVISED 1984  
DMA 6467 III NE—SERIES V816

USGS NHD HISTORICAL MAP  
SEP 09 1988  
REC'D FILE COPY