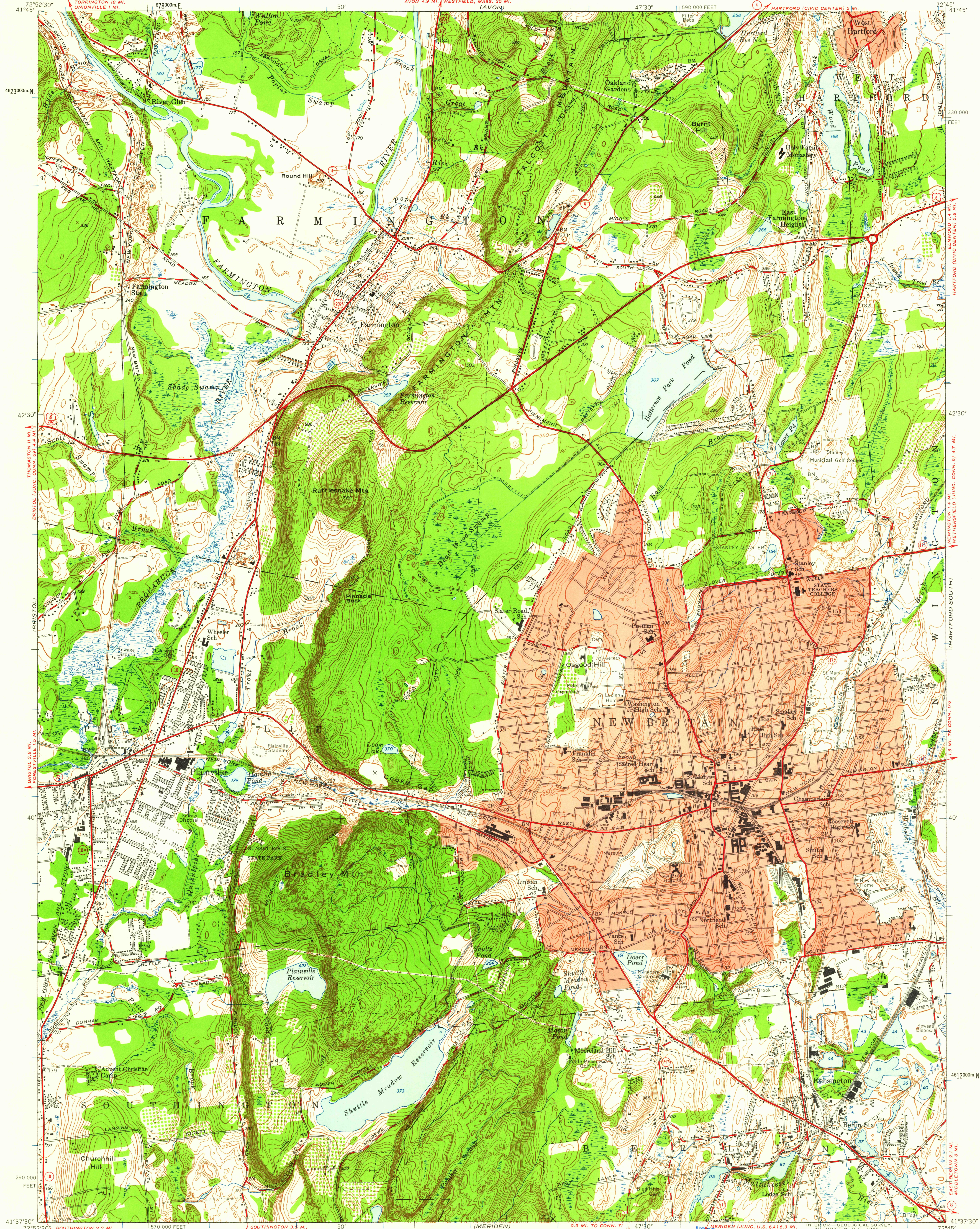


UNITED STATES
DEPARTMENT OF THE INTERIOR
GEOLOGICAL SURVEY

NEW BRITAIN QUADRANGLE
CONNECTICUT—HARTFORD CO.
7.5 MINUTE SERIES (TOPOGRAPHIC)



Mapped by the Geological Survey and City of Hartford
Edited and published by the Geological Survey

Control by USGS, USC&GS, and Connecticut Geodetic Survey

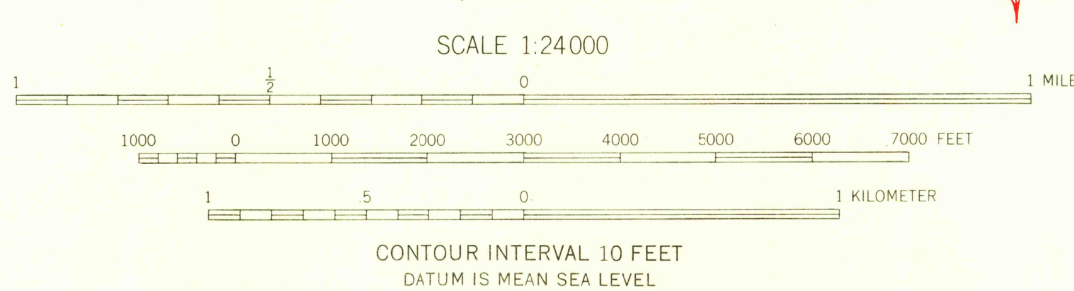
Culture and drainage in part compiled from aerial photographs
taken 1941. Topography by plane-table surveys 1943. Revised
1953 from 1951 photography

Polyconic projection, 1927 North American datum
10,000-foot grid based on Connecticut coordinate system

Red tint indicates areas in which only
landmark buildings are shown

1000-meter Universal Transverse Mercator grid ticks,
zone 18, shown in blue

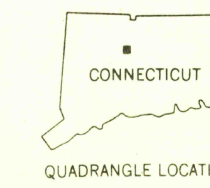
TRUE NORTH
MAGNETIC NORTH
APPROXIMATE MEAN
DECLINATION, 1953



THIS MAP COMPLIES WITH NATIONAL MAP ACCURACY STANDARDS

FOR SALE BY U. S. GEOLOGICAL SURVEY, WASHINGTON 25, D. C.
A FOLDER DESCRIBING TOPOGRAPHIC MAPS AND SYMBOLS IS AVAILABLE ON REQUEST

USGS
Historical File
Topographic Division



ROAD CLASSIFICATION
Heavy-duty 4 LANE 16 LANE Light-duty
Medium-duty 4 LANE 16 LANE Unimproved dirt
U. S. Route State Route

U.S.G.S.
FILE COPY
TOPOGRAPHIC DIVISION

NEW BRITAIN, CONN.
N4137.5-W7245/7.5

1953

OCT - 3 1958

5875